



# Sevington Street

Maida Vale, W9

Asking Price £500,000

A beautiful large raised ground floor one-bedroom apartment spanning approximately 570 square feet and is located in the heart of this sought after area.

The apartment forms part of an attractive converted Victorian house and comprises of a grand reception room with high ceilings, full length sash windows offering a wealth of natural light, a separate kitchen/breakfast room, a spacious principal bedroom with fitted wardrobes quietly located to the rear of the apartment, a fully fitted bathroom suite.

Sevington Street is a quiet tree lined residential road which is situated close to all the local amenities offered by this fashionable area, including the boutique shops and cafés on Formosa Street (approx. 0.3 miles), the famous Regent's Canal (approx. 0.4 Miles), Warwick Avenue Underground Station (Bakerloo Line approx. 0.4 miles) as well as Westbourne Park Station (approx. 0.6 miles) which offers both the circle & Hammersmith and city lines.

**CHESTERTONS**



# Sevington Street

Maida Vale, W9

- Beautiful Victorian Conversion
- 1 Double Bedroom
- Spanning approx. 570 square feet.
- Close To Transport Links



**Tenure:** Share of Freehold 957 years 5 months

**Service Charge:** Ad Hoc

**Ground Rent:** £0

**Local Authority:** City Of Westminster

**Council Tax Band:** D

Score	Energy rating	Current	Potential
92+	A		
81-91	B		
69-80	C		79 C
55-68	D	67 D	
39-54	E		
21-38	F		
1-20	G		

### *Chestertons Little Venice Sales*

26 Clifton Road

Maida Vale

London

W9 1SX

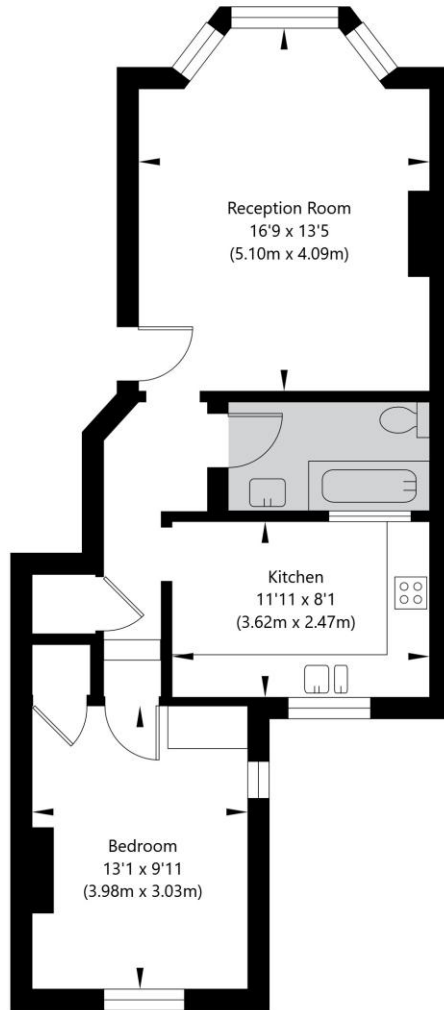
littlevenice@chestertons.co.uk

020 7286 4632

chestertons.co.uk

# Sevington Street, London W9 2QN

Raised Ground Floor  
GROSS INTERNAL FLOOR AREA  
APPROX. 52.87 SQ M / 569 SQ FT



APPROXIMATE GROSS INTERNAL FLOOR AREA 52.87 SQ M / 569 SQ FT  
THIS FLOOR PLAN IS FOR ILLUSTRATIVE PURPOSES ONLY AND  
SHOULD BE USED FOR THIS PURPOSE BY PROSPECTIVE APPLICANTS AS ITS NOT TO SCALE.

(c) AMBERSHORE PIX LIMITED / PHOTO - VIDEO - FLOOR PLANS / 0800 999 1577 / WWW.AMBERSHOREPIX.CO.UK

Chesterton UK Services Limited trading as Chestertons for themselves and for the vendor of this property whose agents they are, give notice that (i) these particulars do not constitute any part of an offer or contract, (ii) all statements contained within these particulars are made without responsibility on the part of Chestertons or the vendor, (iii) whilst made in good faith, none of the statements contained within these particulars are to be relied upon as a statement or representation of fact, (iv) any intending purchasers must satisfy themselves by inspection or otherwise as to the correctness of each of the statements contained within these particulars, (v) the vendor does not make or give either Chestertons or any person in their employment any authority to make or give representation or warranty whatsoever in relation to this property. Wide angle lenses may be used. ©Copyright Chestertons | Chesterton UK Services Limited | Registered Office 5th Floor, The Lantern, 75 Hampstead Road, London, NW1 2PL. Registered Company Number 05334580.



This paper is  
100% recyclable