



SIMPLE LIFE



SIMPLE LIFE



## Ravensworth Close, Princes Gardens, Sheffield, S2

£1,195 PCM

Welcome to Simple Life's Prince's Gardens. Prince's Gardens is situated only 2.5 miles away from Sheffield city centre. 0.25 miles away, there is a regular tram and bus service from Manor Top to Sheffield, with one or the other leaving every 5 minutes. The A57 is just over a mile away, giving easy access to the M1.

Split across three floors, the Hawthorn is a very popular home with growing families. The Hawthorn offers plenty of space with a large living room, French windows leading to your private back garden and a large open-plan kitchen/dining room.

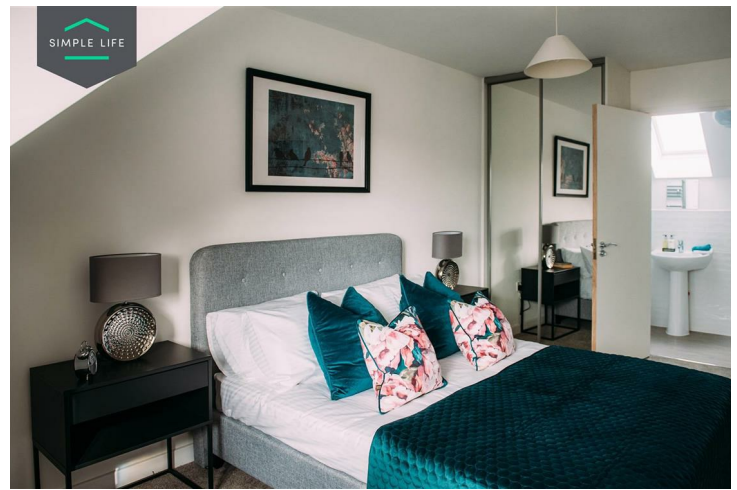
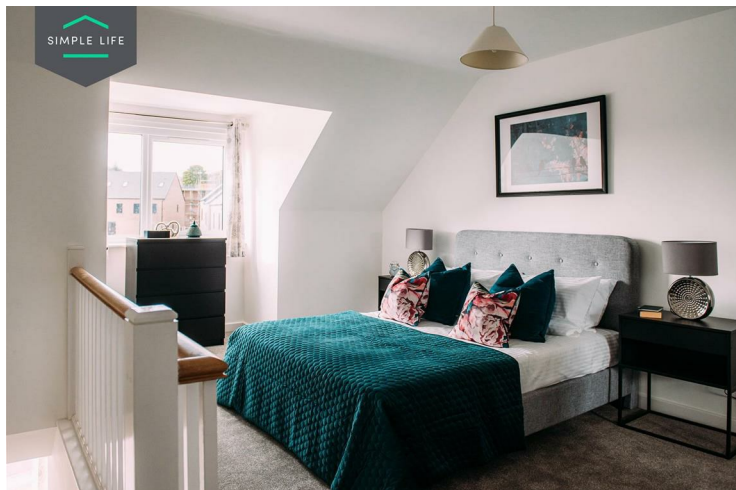
The first floor features two double bedrooms with a family bathroom, complete with both a bath and shower. At the end of the hall you will find a door opening on to a separate lobby area (often used as a small office). This leads on to a very desirable master bedroom and en-suite bathroom on the second floor, offering a peaceful haven for the adults.

The site is close to Manor Top, a local shopping and amenity centre and there's also a ready supply of good primary schools and nurseries nearby including St Theresa's Catholic Primary School directly next door to the development and Prince Edwards also within very close proximity of the site. A flower-filled park, situated at the back of the site, is a beautiful feature of this development. Along with the leafy, tree-lined streets, this development will boast a very picturesque setting.

Deposit £1370  
Holding Deposit £270  
Council Tax A  
Unfurnished  
Available 30th January 2026







## Key Features

- Car Parking Space
- Dishwasher
- Washing/ Drying Machine
- Carpets up the stairs and in the bedrooms
- Blinds in bedrooms
- Security Alarm
- Fridge/Freezer
- Modern kitchen worktops and units
- Private back garden

## Location

