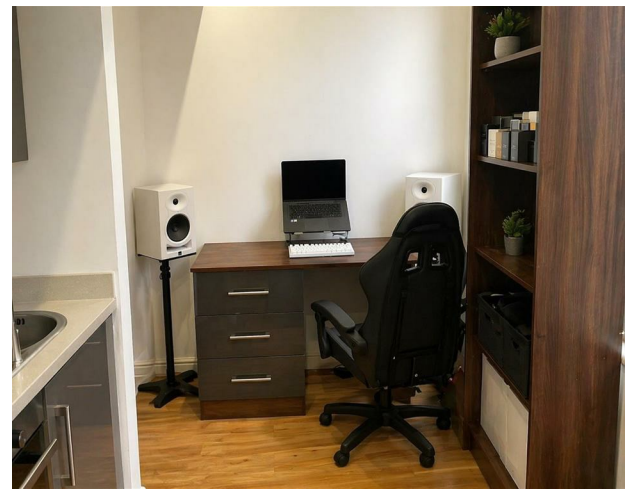


Flat 2B, 26 Hyde Terrace, Leeds, LS2 9LN
£750 Per month

V&L
PROPERTIES



**GO
ALL
IN**

on an all-inclusive
utility package.

- 
- 
- 
- 
- 

Flat 2B, 26 Hyde Terrace, Leeds, LS2 9LN

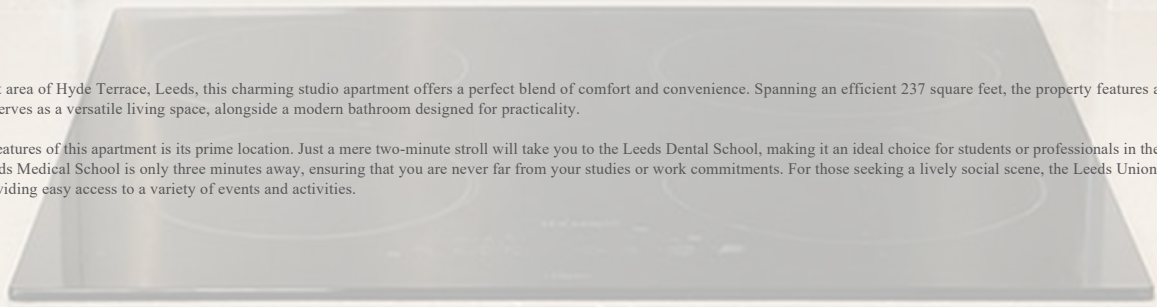
£750 Per month

Council Tax Band: A

2B HT

Nestled in the vibrant area of Hyde Terrace, Leeds, this charming studio apartment offers a perfect blend of comfort and convenience. Spanning an efficient 237 square feet, the property features a well-appointed reception room that serves as a versatile living space, alongside a modern bathroom designed for practicality.

One of the standout features of this apartment is its prime location. Just a mere two-minute stroll will take you to the Leeds Dental School, making it an ideal choice for students or professionals in the dental field. Additionally, the Leeds Medical School is only three minutes away, ensuring that you are never far from your studies or work commitments. For those seeking a lively social scene, the Leeds Union Society is a short ten-minute walk, providing easy access to a variety of events and activities.





22 Regent Street
 Leeds
 LS2 7QA
 01133 225737
info@vgl-properties.co.uk
vgl-properties.co.uk

Energy Efficiency Rating		Current	Potential
<i>Very energy efficient - lower running costs</i>			
(92 plus) A			
(81-91) B			
(69-80) C		70	70
(55-68) D			
(39-54) E			
(21-38) F			
(1-20) G			
<i>Not energy efficient - higher running costs</i>			
England & Wales		EU Directive 2002/91/EC 