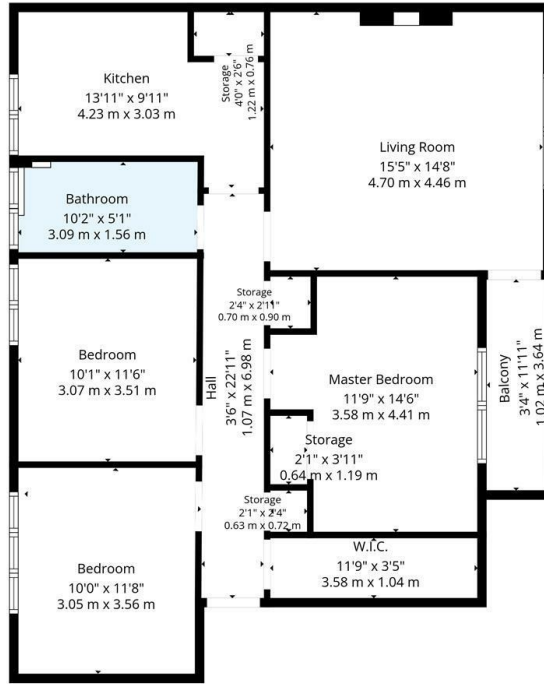


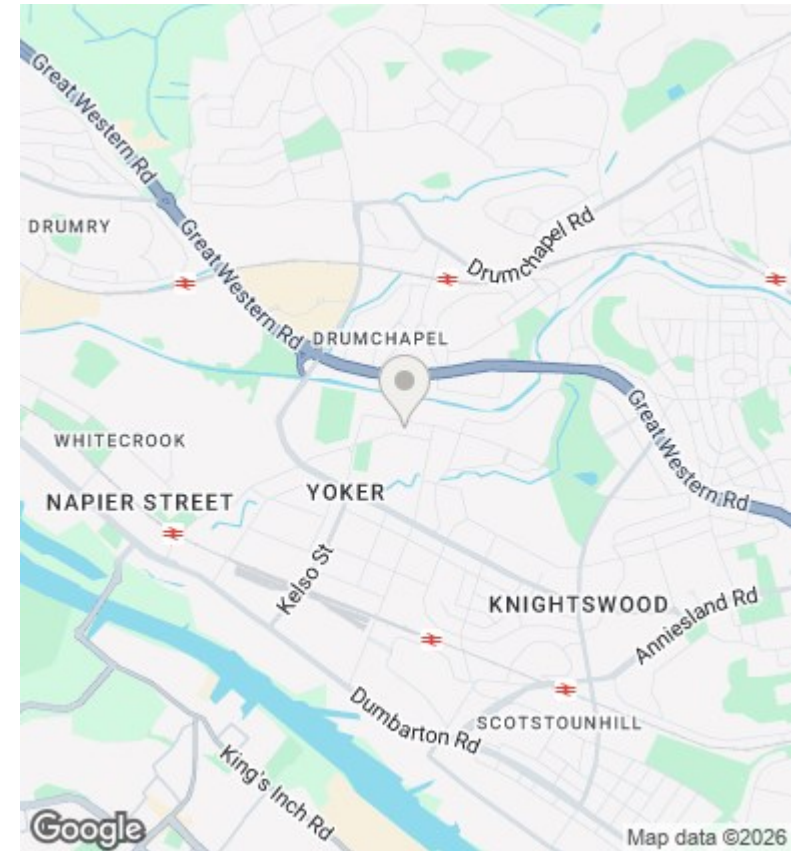
1/2, 313 Archerhill Road, Glasgow, G13 4PL

Offers Over £115,000

- Three bedroom first floor flat
- Well proportioned double bedroom
- Excellent location
- Private balcony
- Luxury bathroom
- EER Band C
- Generously sized lounge
- Modern kitchen



TOTAL: 926 sq. ft, 86 m²
 1st floor: 926 sq. ft, 86 m²
 EXCLUDED AREAS: BALCONY: 40 sq. ft, 4 m², STORAGE: 31 sq. ft, 4 m², WALLS: 70 sq. ft, 6 m²
Floor Plan Created By Cubicasa App. Measurements Deemed Highly Reliable But Not Guaranteed.



Directions

Viewings

Viewings by arrangement only. Call 01417262111 to make an appointment.

Council Tax Band

EPC Rating:

C

Energy Efficiency Rating		Current	Potential
<i>Very energy efficient - lower running costs</i>			
(92 plus) A			
(81-91) B			
(69-80) C		80	80
(55-68) D			
(39-54) E			
(21-38) F			
(1-20) G			
<i>Not energy efficient - higher running costs</i>			
Scotland	EU Directive 2002/91/EC		