



Guide Price
£550,000

Freehold

3x  2x  1x 

**Hartington Terrace,
Brighton, East Sussex,
BN2**

cubitt & west
Helping you move forwards



Main features

- Extended home in friendly and welcoming neighbourhood
- Brighton city centre and beach are within walking distance
- Close to train station
- Unexpectedly large 'secret' rear garden
- Original features and wooden floors
- Virtual tour available

Accommodation

GROUND FLOOR

Entrance Hall

Lounge : 14'3 x 10'6 (4.35m x 3.20m)

Kitchen/Diner : 16'4 x 11'7 (4.98m x 3.53m)

Utility Room : 7'8 x 5'6 (2.34m x 1.68m)

FIRST FLOOR

Bedroom 2: 11'1 x 10'2 (3.38m x 3.10m)

Bedroom 3: 11'8 x 9'5 (3.56m x 2.87m)

Bathroom

SECOND FLOOR

Landing

Bedroom 1: 17'8 x 11'0 (5.39m x 3.36m)

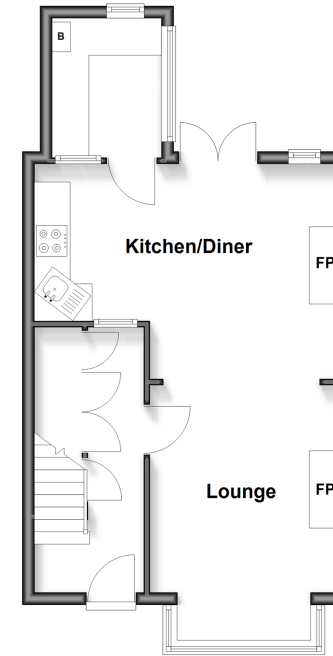
En Suite Shower Room

OUTSIDE

Front and Rear Garden

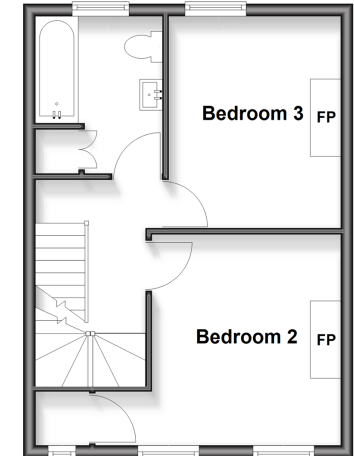
Ground Floor

Approx. 39.7 sq. metres (427.1 sq. feet)



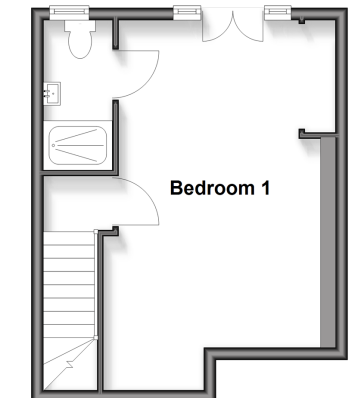
First Floor

Approx. 34.6 sq. metres (372.8 sq. feet)



Second Floor

Approx. 27.1 sq. metres (291.4 sq. feet)



Call Lewes Road Brighton - 01273 604377 ■ cubittandwest.co.uk

- Legal advice should be taken to verify fixtures/fittings, planning, alterations and/or lease details
- Appliances & services are untested, dimensions are approximate and floor plans are not to scale



31320749/20260117/AF/EM