



WHITEHOUSE APARTMENTS, SE1

£2,350 pcm

A beautifully presented studio within the prestigious Whitehouse Apartments, adjacent to the Royal Festival Hall. Offering a spacious layout on the third floor, residents benefit from a concierge, health and fitness centre, communal gardens and superb transport links via Waterloo Station.

- Studio Apartment
- Fully Furnished
- 24-Hour Concierge
- On-site Leisure Facilities



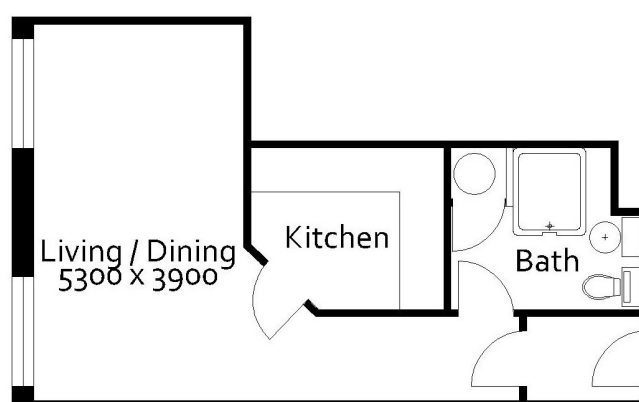
ABOUT THE HOME

A prestigious portered development situated in the heart of Waterloo. This designer studio apartment is well positioned with views across the landscaped Whitehouse gardens. Presented in excellent order throughout, the property enjoys a naturally bright reception with sleeping area, a separate fully integrated kitchen and a luxury three piece shower bathroom. Additionally, residents have the benefit of a 24-hour concierge service and a health and fitness complex comprising of pool, gym, steam, sauna and jacuzzi. The development is perfectly situated for quick access to some of London

The Whitehouse Apartments occupy a prime riverside location at the heart of London's South Bank cultural quarter, moments from the National Theatre, BFI Southbank, and the Southbank Centre. The West End, Covent Garden, and Trafalgar Square are all within easy reach, while the surrounding area offers a wealth of restaurants, cafés, galleries, and historic landmarks. Transport connections are exceptional, with Waterloo Station (Underground and National Rail) located a short walk away, providing direct access across the Capital and beyond. Regular bus services and extensive cycle routes further enhance connectivity.







AREA: 34.80 sq.m

LiFE RESIDENTIAL

252 Westminster Bridge
Road, London, SE1 7PD
Sales: 020 7476 0125
Lettings: 020 7620 1600

Energy Rating: C. We aim to make our particulars both accurate and reliable. However they are not guaranteed; nor do they form part of an offer or contract. If you require clarification on any points then please contact us, especially if you're traveling some distance to view. Please note that appliances and heating systems have not been tested and therefore no warranties can be given as to their good working order.