



10 Wentworth Close Station Road, Lyminge - CT18 8LZ

Guide Price **£139,950**

Approximate Gross Internal Area = 47 sq m / 506 sq ft

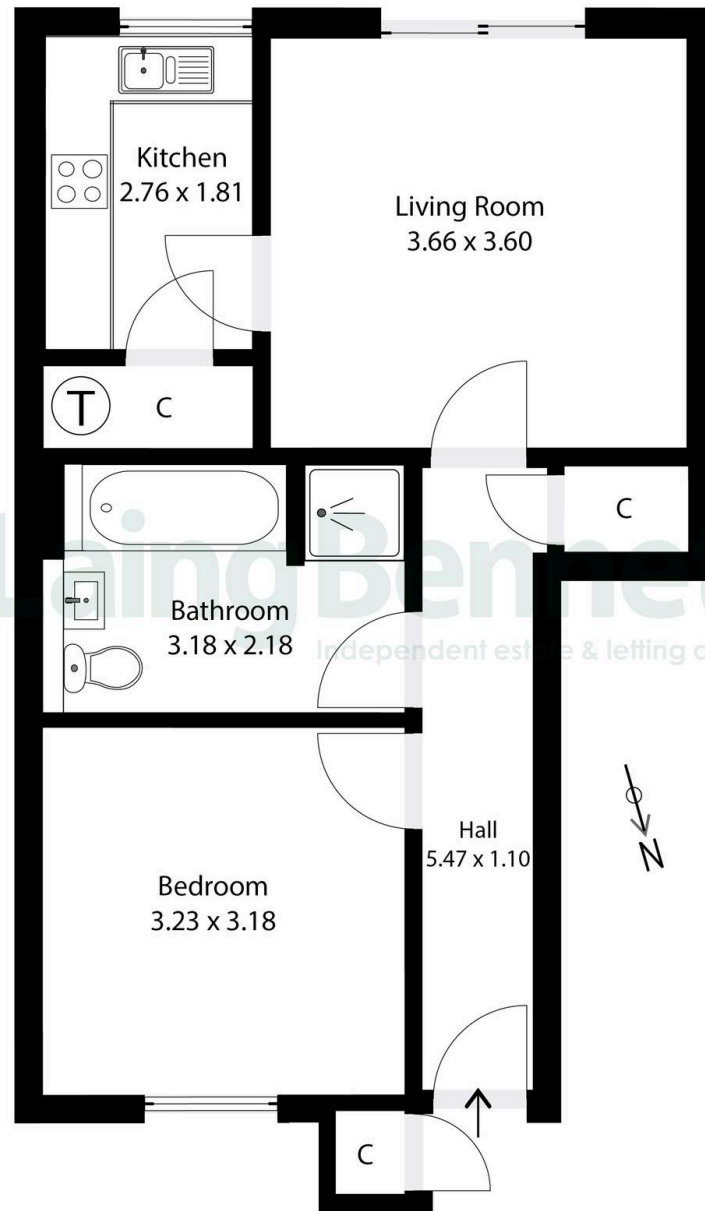


Illustration for Identification purposes only. Measurements are approximate. Dimensions given are between the widest points.
Not to scale. Outbuildings are not shown in actual location.
© Unauthorised reproduction prohibited - chriskemps@hotmail.com



10 Wentworth Close Station Road

Lyminge, Folkestone

This beautifully presented one-bedroom retirement apartment offers modern living in a thoughtfully designed space. The open plan living area flows seamlessly into the sleek kitchen, which is presented in a stylish white finish featuring an integrated oven. Large sliding patio doors in the living area provide effortless access to the garden and patio area. The bedroom is a peaceful retreat featuring a large window and mirrored wardrobe range. The modern bathroom is both practical and luxurious, boasting a shower, separate bath and a heated towel rail. There are communal gardens, a residents' lounge, kitchen and parking area. No forward chain.

Council Tax band: B

Tenure: Leasehold

EPC Energy Efficiency Rating: C

EPC Environmental Impact Rating: D





**Laing
Bennett**
Independent estate & letting agents

Laing Bennett

Laing Bennett Ltd, The Estate Office, 8 Station Road – CT18 8HP

01303 863393

info@laingbennett.co.uk

www.laingbennett.co.uk/

DISCLAIMER – These details are for guidance only and do not form part of an offer or contract. Measurements are approximate. Laing Bennett Ltd and the Vendor/Landlord accept no liability. Services and appliances are untested. Applicants must make their own checks. Items shown may not be included. No staff have authority to give warranties.