



## The Annexe, Junior Street

£165,000 Leasehold

Top-floor, penthouse-style two-bedroom apartment in Leicester city centre, featuring a spacious open-plan living space, allocated parking and a private rooftop garden with far-reaching views.

Council Tax band: C

Tenure: Leasehold

EPC Energy Efficiency Rating: C

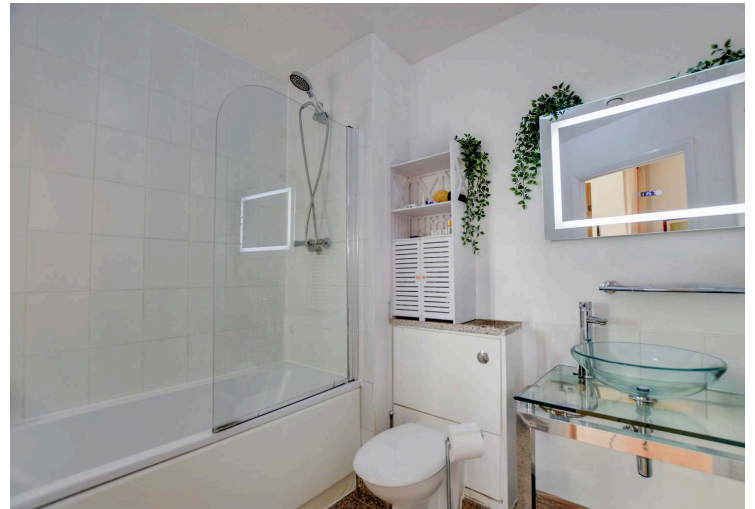


Knightsbridge  
Estate Agents

0116 274 5544







### Entrance Hall

Features laminate flooring and a storage cupboard.

### Open Plan Lounge Dining Kitchen:

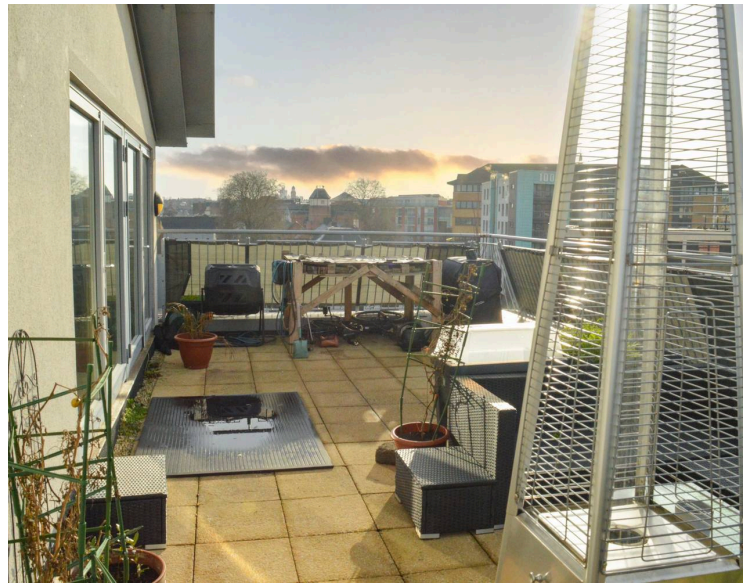
29' 9" x 10' 7" (9.06m x 3.22m)

Kitchen Area: With a stainless steel sink and drainer unit, a range of wall and base units with work surfaces, a built-in oven and electric hob, a stainless steel chimney hood, a built-in fridge freezer, a built-in washing machine and tiled flooring. Living Area: With laminate flooring, inset ceiling spotlights, TV point and two sets of double-glazed doors leading to the rooftop garden.

### Bedroom One

14' 10" x 9' 10" (4.53m x 2.99m)

With a double-glazed window to the side elevation and a recessed area providing a hanging rail and space for drawers.



### **Bedroom Two**

13' 1" x 11' 7" (3.99m x 3.54m)

With a double-glazed door to the side elevation.

### **Bathroom**

7' 9" x 7' 0" (2.37m x 2.14m)

With a bath with shower over, a low-level WC, a wash hand basin, tiled flooring, and a heated chrome towel rail.

### **Roof Terrace**

A tiled and paved rooftop garden featuring outside lighting. The roof terrace offers views to the side and rear, including Bradgate Park.

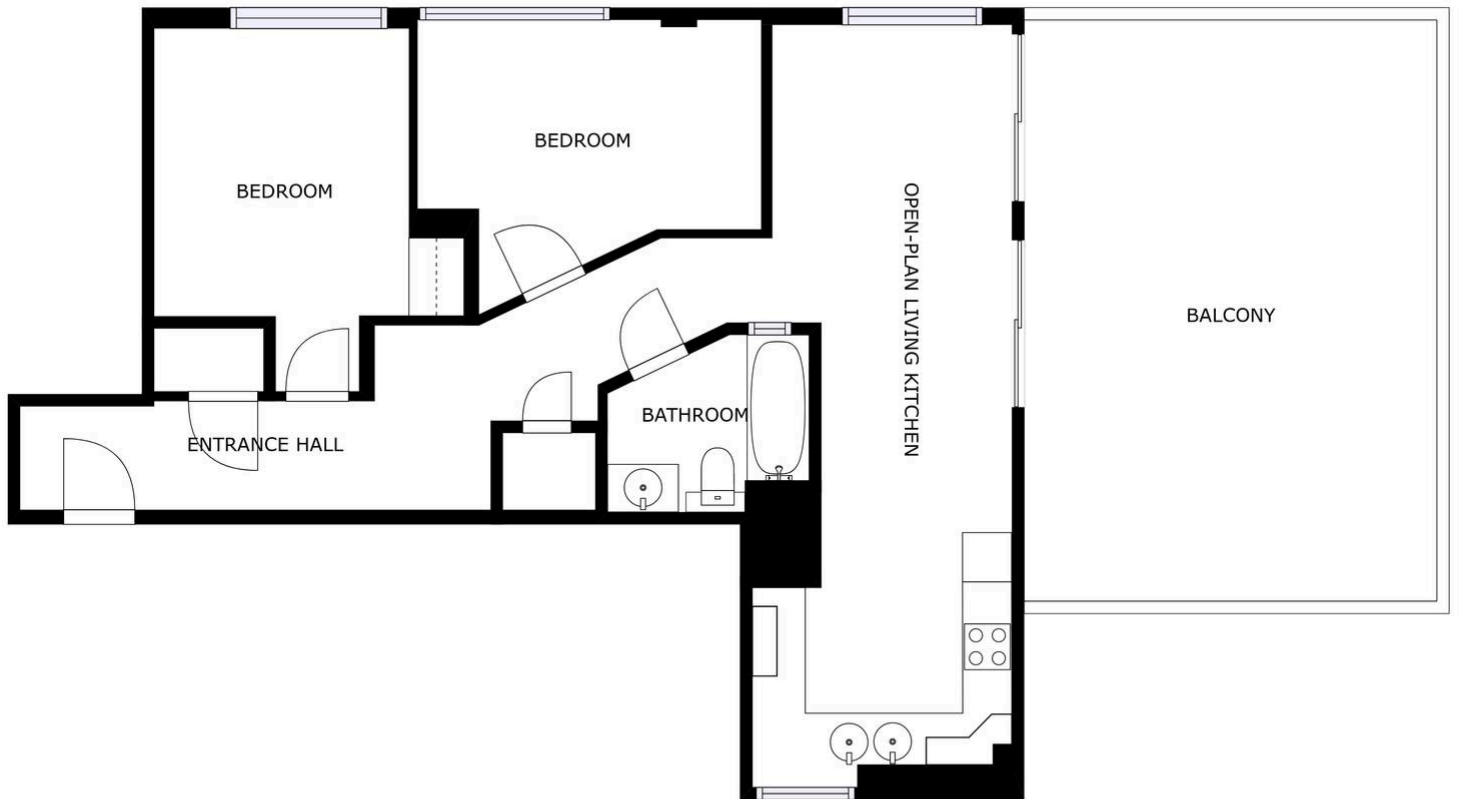
### **Allocated Parking**

1 Vehicle.

### **Lease Information:**

Lease Expiry - 979 Years Remaining

Service Charge - 209.45 per month



FLOOR 1

SIZES AND DIMENSIONS ARE APPROXIMATE, ACTUAL MAY VARY.



**We'll keep you moving...**



We must inform all prospective purchasers that the measurements are taken by an electronic tape and are provided as a guide only and they should not be used as accurate measurements. We have not tested any mains services, gas or electric appliances, or fixtures and fittings mentioned in these details, therefore, prospective purchasers should satisfy themselves before committing to purchase. Intending purchasers must satisfy themselves by inspection or otherwise to the correctness of the statements contained in these particulars. Knightsbridge Estate Agents & valuers (nor any person in their employment) has any authority to make any representation or warranty in relation to the property. The floor plans are not to scale, and are intended for use as a guide to the layout of the property only. They should not be used for any other purpose. Similarly, the plans are not designed to represent the actual décor found at the property in respect of flooring, wall coverings or fixtures and fittings.