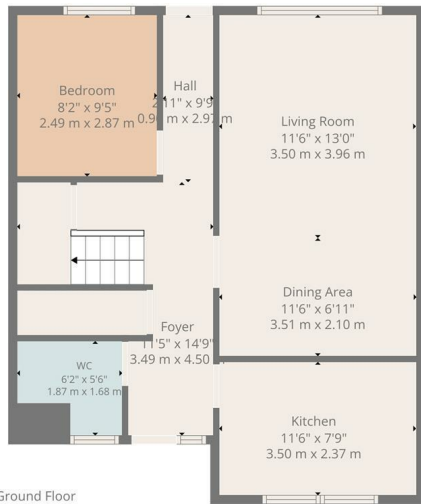
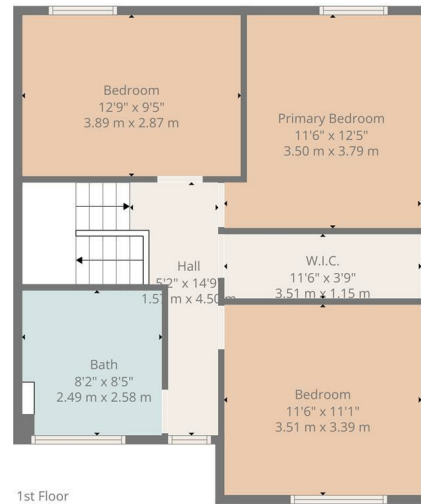




OFFERS OVER  
**£145,000**  
**Mallard Terrace**  
Glasgow, G75 8UF



Ground Floor



1st Floor



**TOTAL: 1221 sq. ft, 114 m<sup>2</sup>**  
 Ground floor: 611 sq. ft, 57 m<sup>2</sup>, 1st floor: 610 sq. ft, 57 m<sup>2</sup>  
 EXCLUDED AREAS: WALLS: 105 sq. ft, 10 m<sup>2</sup>

Floor Plan Created By Cubicasa App. Measurements Deemed Highly Reliable But Not Guaranteed.



Energy Efficiency Rating		Current	Potential
Very energy efficient - lower running costs			
(92 plus)	A		
(81-91)	B		
(69-80)	C		
(55-68)	D		
(39-54)	E		
(21-38)	F		
(1-20)	G		
Not energy efficient - higher running costs			
<b>Scotland</b>		76	82
		EU Directive 2002/91/EC	



Agents Note: Whilst every care has been taken to prepare these particulars, they are for guidance purposes only. All measurements are approximate and are for general guidance purposes only and whilst every care has been taken to ensure their accuracy, they should not be relied upon and potential buyers/tenants are advised to recheck the measurements



HEMMINGS HOMES

**OFFICE ADDRESS**

376 Brandon Street  
 Motherwell  
 North Lanarkshire  
 ML1 1XA

**OFFICE DETAILS**

01698 263413  
 enquiries@hemmingshomes.co.uk  
 hemmingshomes.co.uk