



**Oxford Road, Teddington**  
Teddington

**£225,000**

**Bedrooms:** Studio

**Bathrooms:** 1

**Receptions:** 1

Ref DJ1686

This well-presented Victorian conversion apartment is located in a quiet and very pretty tree-lined avenue only 300 metres from the wild expanse of Royal Bushy Park.

It is situated on the first floor of this gorgeous character property with a bright, recently refurbished shower room and a large living room with south-facing window and a large handy storage cupboard. To the rear a well-appointed kitchen has fitted units, a combi gas boiler and westerly views to the rear. The communal areas have recently been redecorated with a new main door and wonderful panelled walls.

This excellent apartment is also well-located only a 1/2 mile from central Teddington or 1/3 mile from Hampton Hill High Street and within a mile of Teddington Train Station with 8 direct services per hour in to London Waterloo. It is offered to the market with no onward chain.

Lease remaining - 135 years

Ground Rent - £150pa

Service Charges - £720pa

Council Tax Band - B (£1,845pa)

EPC rated D





**Bedrooms:** 1

**Bathrooms:** 1

**Receptions:** 1

Ref DJ1686

This well-presented Victorian conversion apartment is located in a quiet and very pretty tree-lined avenue only 300 metres from the wild expanse of Royal Bushy Park.

It is situated on the first floor of this gorgeous character property with a bright, recently refurbished shower room and a large living room with south-facing window and a large handy storage cupboard. To the rear a well-appointed kitchen has fitted units, a combi gas boiler and westerly views to the rear. The communal areas have recently been redecorated with a new main door and wonderful panelled walls.

This excellent apartment is also well-located only a 1/2 mile from central Teddington or 1/3 mile from Hampton Hill High Street and within a mile of Teddington Train Station with 8 direct services per hour in to London Waterloo. It is offered to the market with no onward chain.

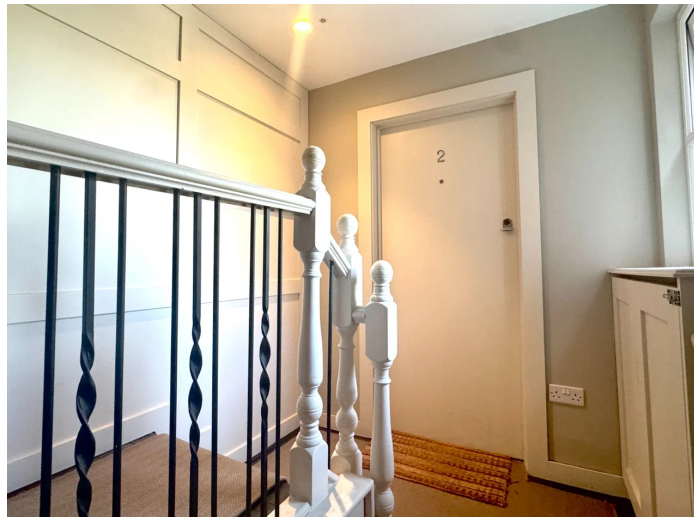
Lease remaining - 135 years

Ground Rent - £150pa

Service Charges - £720pa

Council Tax Band - B (£1,845pa)

EPC rated D



**Bedrooms:** 1

**Bathrooms:** 1

**Receptions:** 1

Ref DJ1686

This well-presented Victorian conversion apartment is located in a quiet and very pretty tree-lined avenue only 300 metres from the wild expanse of Royal Bushy Park.

It is situated on the first floor of this gorgeous character property with a bright, recently refurbished shower room and a large living room with south-facing window and a large handy storage cupboard. To the rear a well-appointed kitchen has fitted units, a combi gas boiler and westerly views to the rear. The communal areas have recently been redecorated with a new main door and wonderful panelled walls.

This excellent apartment is also well-located only a 1/2 mile from central Teddington or 1/3 mile from Hampton Hill High Street and within a mile of Teddington Train Station with 8 direct services per hour in to London Waterloo. It is offered to the market with no onward chain.

Lease remaining - 135 years

Ground Rent - £150pa

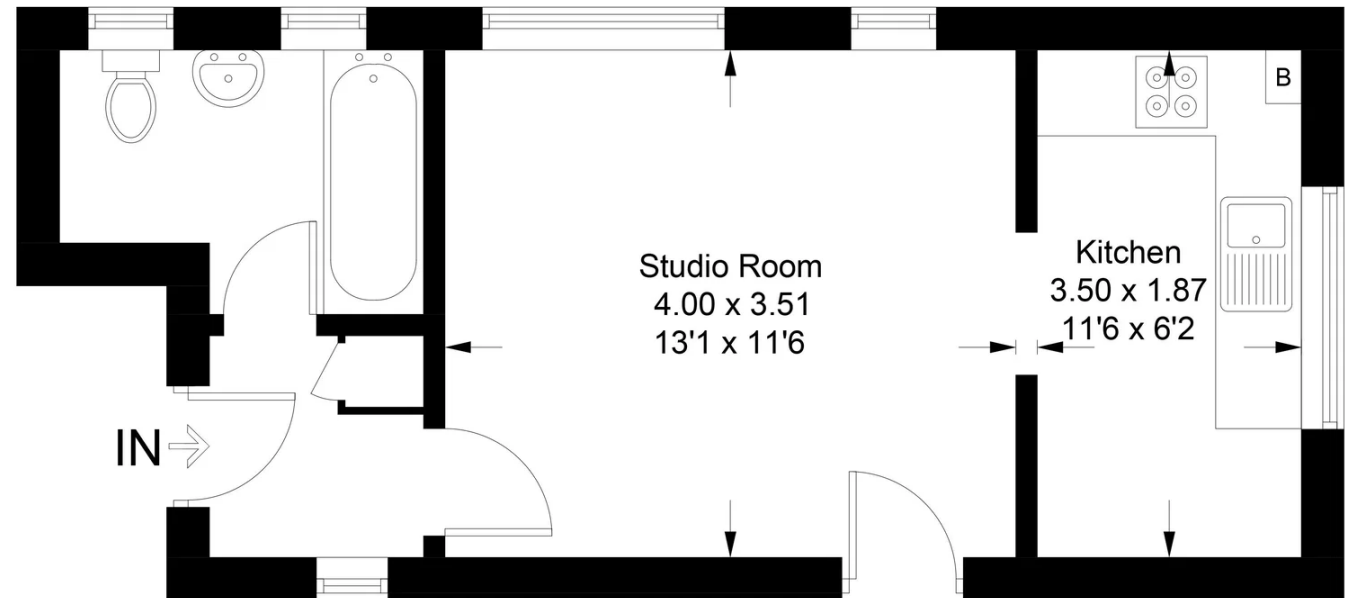
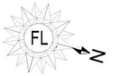
Service Charges - £720pa

Council Tax Band - B (£1,845pa)

EPC rated D

## Oxford Road, Teddington

Approximate Gross Internal Area = 28.8 sq m / 310 sq ft



## First Floor

Featherstone Leigh Residential Ltd  
Every attempt is made to assure accuracy, however measurements are approximate and for illustrative purposes only. Not to scale. (ID1263961)