



**WESTMORELAND TERRACE**  
PIMLICO

**JACKSON-STOPS** 



---

## WESTMORELAND TERRACE PIMLICO, SW1V

ASKING PRICE: £1,995,000

An attractive, double-fronted, four-bedroom house is offered to the market in Pimlico SW1.

Located in the desirable Westmoreland Triangle and bordering the 'Pimlico Grid', this property would suit both downsizers and upsizers alike.

The property is beautifully presented throughout and offers a superb balance of traditional elegance combined with modern conveniences such as air conditioning.

A well appointed separate kitchen is located on the left hand side as you enter and a formal dining room to the right. The double fronted reception room occupies the entire first floor, providing excellent entertaining space. The second floor features a spacious principal bedroom with ample built-in wardrobes, as well as access to an incredibly useful mezzanine level as well as a good-sized second bedroom and bathroom.

Westmoreland Terrace makes up part of the Westmoreland Triangle, which has a well-run and active residents association. It is well located for all local transport being only 0.7 miles from Sloane Square and 0.6 miles from Victoria Station and only 0.4 miles from Battersea Park and Battersea Power Station.

### KEY FEATURES

- Freehold
- Four Bedroom
- No Onward Chain
- Air Conditioning
- Double Fronted House
- Pimlico







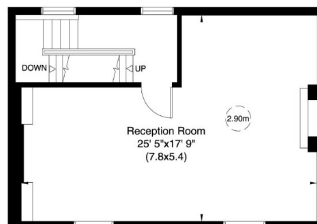
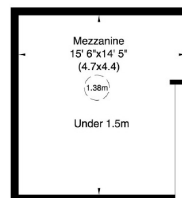
## Westmoreland Terrace, SW1

Approximate Gross Internal Area

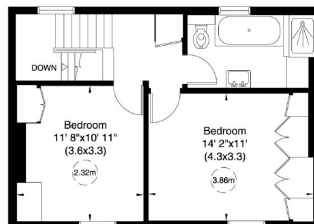
189 sq m/ 2036 sq ft Including Under 1.5m and Vault

163 sq m/ 1760 sq ft Excluding Under 1.5m and Vault

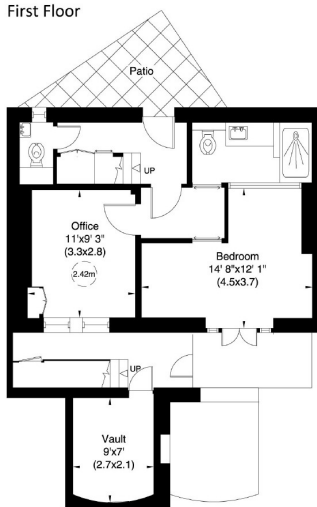
Not to Scale, for identification only



First Floor



Second Floor



Lower Ground Floor



Ground Floor

For guidance only and must not be relied upon as a statement of fact or used for valuation purposes.  
All measurements and areas are approximate only (and have been prepared in accordance with the current edition of the RICS Code of Measuring Practice).



Energy Rating: D. We aim to make our particulars both accurate and reliable. However they are not guaranteed; nor do they form part of an offer or contract. If you require clarification on any points then please contact us, especially if you are travelling some distance to view. Please note that appliances and heating systems have not been tested and therefore no warranties can be given as to their good working order.

**ASKING PRICE: £1,995,000**

**PIMLICO**

**020 7828 4050**

pimlicosales@jackson-stops.com

jackson-stops.co.uk

**JACKSON-STOPS**