



Daubeney Road, E5

£550,000

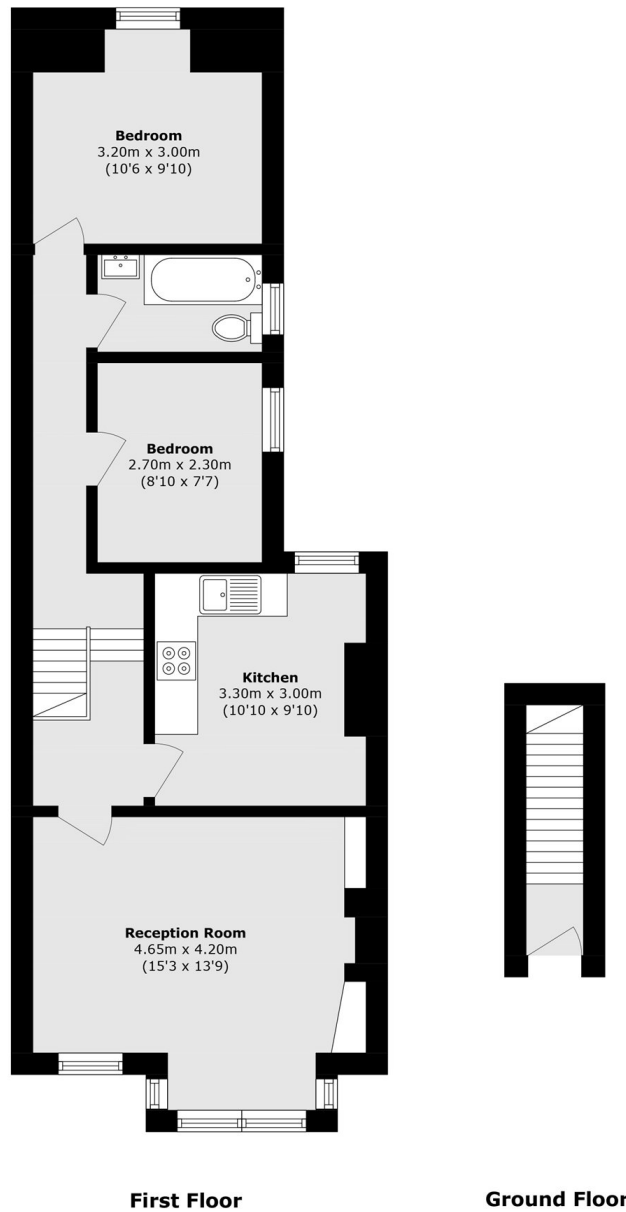
A two bedroom, split level Victorian conversion overlooking Daubeney Fields. Renovated throughout, the property also has planning permission for a loft extension and roof terrace, offering a buyer potential to extend and add value. It is being sold chain free.

Daubeney Road is moments from the vibrant Chatsworth Road as well as the green spaces of Daubeney Fields, Millfields Park, Hackney Marshes and the River Lea, offering many opportunities for outdoor recreation. Homerton Overground is half a mile away, only two stops into Stratford and Stratford International for numerous transport connections. The property is also within the catchment area of many Ofsted outstanding primary and secondary schools.

Features

- Victorian Conversion
- Two Double Bedrooms
- Split Level
- Planning Permission Granted
- Chatsworth Road
- Chain Free

Daubeney Road, LONDON, E5



Total area (approx.): 59.9 sq. m (644.7 sq. ft)