



LANSDOWNE ROAD, SW20

£4,500 per month

Five bedrooms
Three bathrooms
Office
Spacious kitchen
Parking
Energy rating: c

@marshandparsons
marshandparsons.co.uk

MARSH &
PARSONS



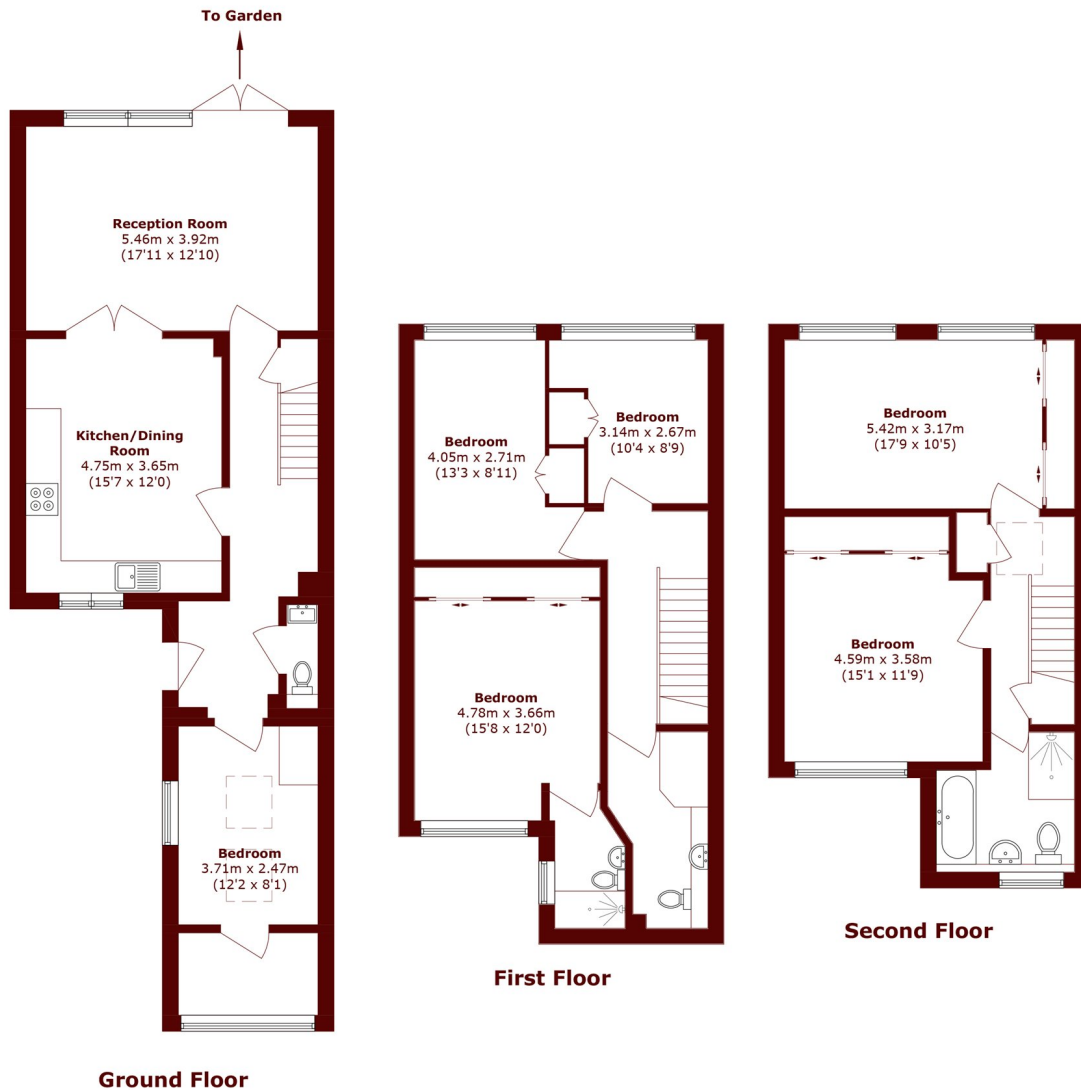
ABOUT THE PROPERTY

A spacious five bedroom, three bathroom house available to rent close to Wimbledon Village. The property has a south west facing garden, wooden flooring throughout, office space, utility room and off street parking.

Located on the 'slopes' of Wimbledon offering a quick commute to Wimbledon Station and Wimbledon Common.



STEP INSIDE LANSDOWNE ROAD



Total area (approx.): 171.1 sq. m (1,841.7 sq. ft)

Wimbledon
020 8879 6661

Energy Rating: C We aim to make our particulars both accurate and reliable. However, they are not guaranteed; nor do they form part of an offer or contract. If you require clarification on any points then please contact us, especially if you're traveling some distance to view. Please note that appliances and heating systems have not been tested and therefore no warranties can be given as to their good working order

MARSH &
PARSONS