





Nelson Road

Worcester

No onward chain. Three-bedroom semi-detached home with original features, versatile cellar, renovated bathroom, spacious garden, double glazing, and gas central heating in a sought-after area.

Council Tax band: C

Tenure: Freehold

EPC Energy Efficiency Rating: D

EPC Environmental Impact Rating: E

- Three Bedroom Semi Detached Home
- NO ONWARD CHAIN
- Ideal For First Time Buyers
- Two Reception Rooms
- Period Home With Original Features
- Newly Renovated Bathroom
- Spacious Kitchen
- Prime Residential Location
- Basement Room
- St Johns





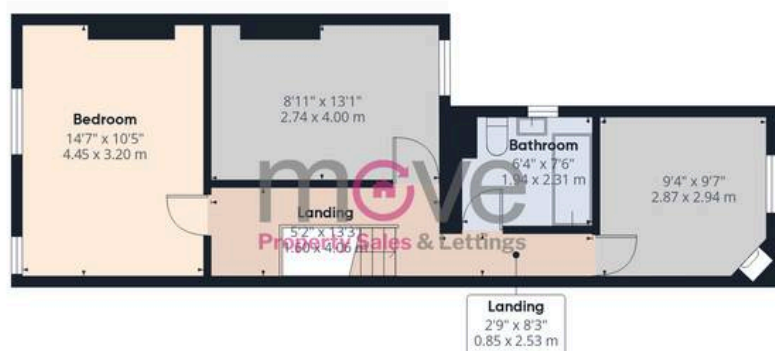
Floor -1



Floor 0

Approximate total area⁽¹⁾

1119 ft²
104.1 m²



Floor 1



(1) Excluding balconies and terraces

Calculations reference the RICS IPMS 3C standard. Measurements are approximate and not to scale. This floor plan is intended for illustration only.

GIRAFFE360





Move Estate Agents

7 Reindeer Court, Worcester - WR1 2DL

01905 697990

worcester@move.uk.net

move.uk.net/

move
Property Sales & Lettings