

Turneville Road, W14

£400,000

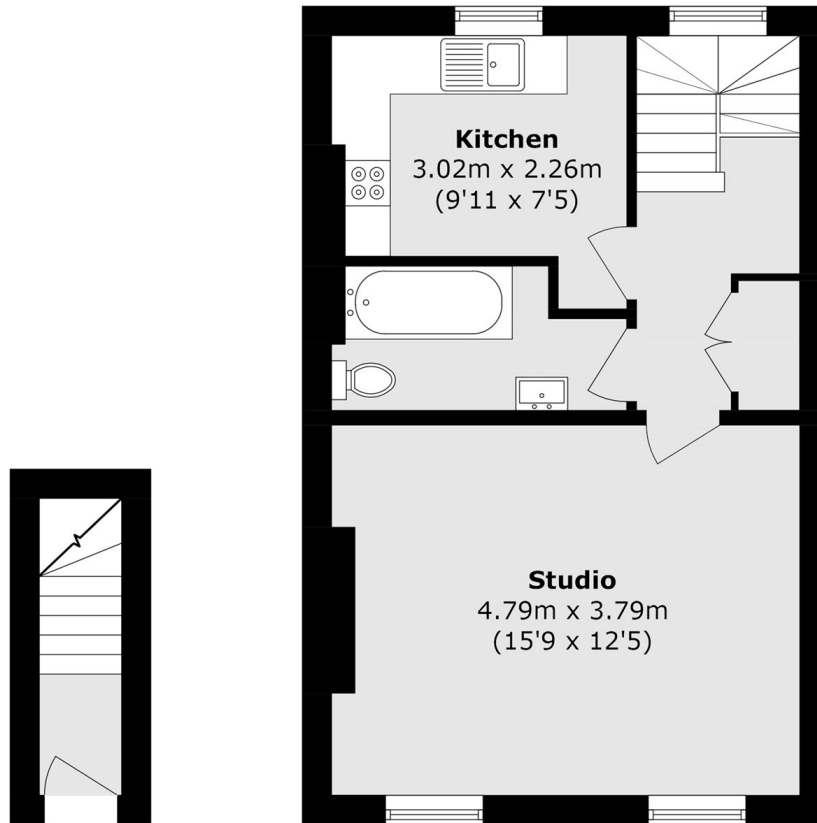
A bright and well-presented studio apartment situated on a popular residential road. Ideal for a time time buyer or a buyer looking for a strong rental investment.

Turneville Road is located close to West Kensington and Barons Court tube stations (District line & Piccadilly line). North End Road and Fulham Broadway are close by with a selection of local amenities. There are also many bus routes leading into the city.

Features

- Long Leasehold
- No Chain
- Studio
- Wooden Floors
- Great Location
- Close To Tubes

Turneville Road, London, W14



Ground Floor

First Floor

Total Area (approx.): 39.8 sq. m (428.4 sq. ft)