



8 Longdale Lane, Ravenshead – NG15 9AD

Guide Price **£825,000**



8 Longdale Lane

Ravenshead, Nottingham

NO CHAIN! Executive 4 double bed detached family home neighbouring Newstead Abbey. Stunning open plan living space, 3 baths, south-westerly facing garden and a gated driveway with double garage!

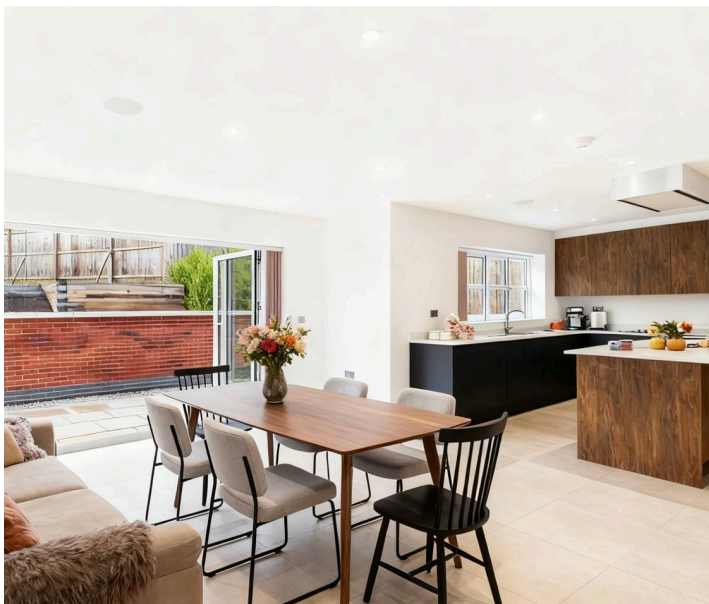
Council Tax band: G

Tenure: Freehold

EPC Energy Efficiency Rating: B

EPC Environmental Impact Rating: B

- Executive modern detached family home
- Offered to the market with no upward chain
- Neighbouring the historic Newstead Abbey with nearby local amenities and excellent links to both Mansfield and Nottingham
- Stunning open plan living/dining/kitchen space with bifold doors
- Bright and spacious lounge and a ground floor study/home office
- Contemporary fitted kitchen with a range of quality integrated appliances, quartz worktops and a separate utility
- Four first floor double bedrooms (two with fitted wardrobes)
- Stylish four-piece family bathroom and two luxurious en-suites
- Large driveway with a secure remote controlled gate, double garage and EV charging
- South-westerly facing landscaped garden with lawn and generous patio seating space









Floor 0

Approximate total area⁽¹⁾

261.9 m²
2819 ft²

Reduced headroom

5.6 m²
60 ft²



Floor 1



(1) Excluding balconies and terraces

Reduced headroom

----- Below 1.5 m/5 ft

Calculations reference the RICS IPMS 3C standard. Measurements are approximate and not to scale. This floor plan is intended for illustration only.

GIRAFFE360



David James Estate Agents

43 Forest Street, Sutton-in-Ashfield - NG17 1DA

01623 554084 • sutton@david-james.com • www.david-james.com

These particulars are produced in good faith and are set out as a general guide only. Measurements are approximate and floor plans are for illustrative purposes only. Services have not been tested. We have established professional relationships with third-party suppliers for the provision of services to Clients, details of which can be found on the property listing page on our website.