



## BOWEN DRIVE, SE7

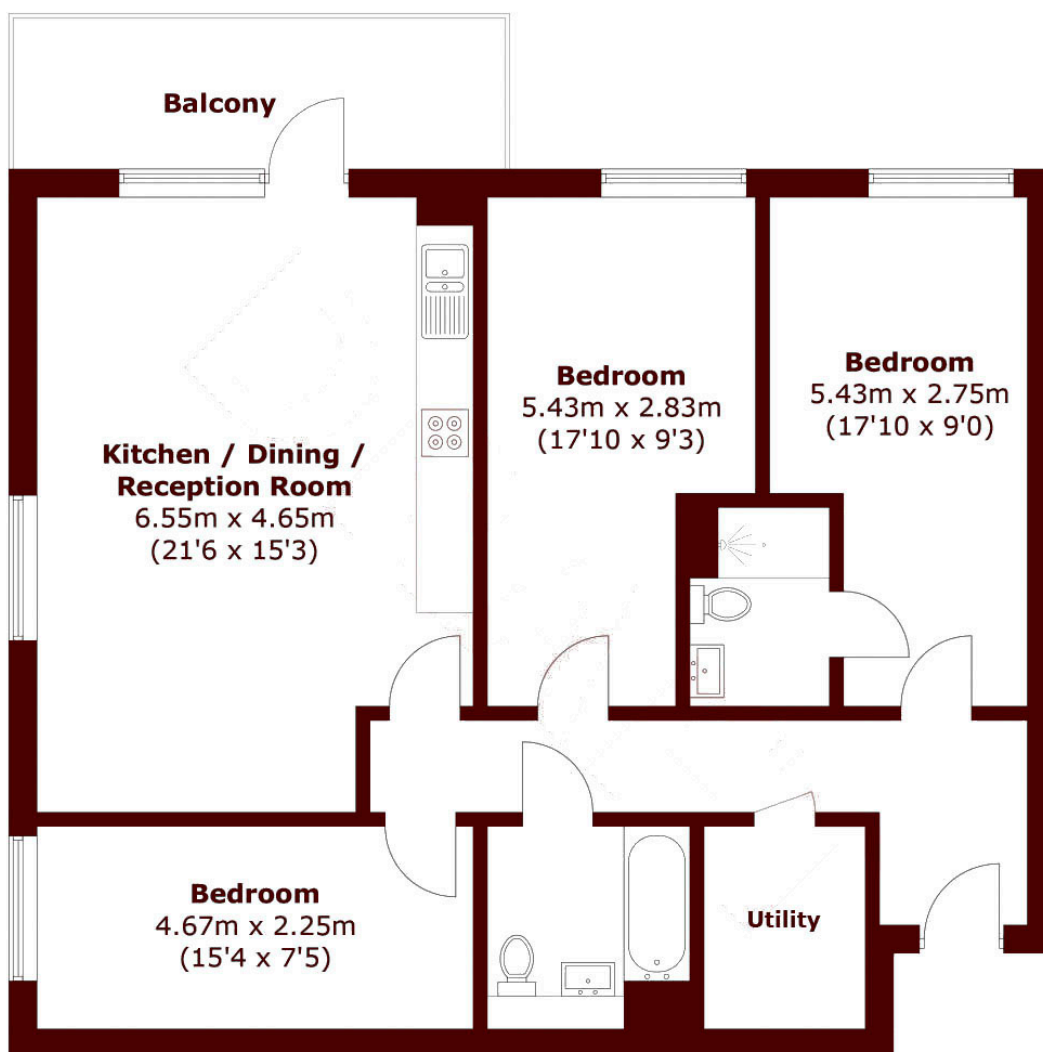
£2,500 per month

A third floor, three bedroom apartment situated within a highly desirable modern development in the heart of Charlton. This property is not available to sharers.

Apartment  
Three bedrooms  
Two bathrooms

Open plan living/dining  
Private balcony  
Off-street

# STEP INSIDE BOWEN DRIVE



## Third Floor

Total area (approx.): 92.0 sq. m (990.2 sq. ft)

Balcony : 8.4 sq. m (90.4 sq. ft)

Charlton  
020 8296 1628

Energy Rating: B We aim to make our particulars both accurate and reliable. However, they are not guaranteed; nor do they form part of an offer or contract. If you require clarification on any points then please contact us, especially if you're traveling some distance to view. Please note that appliances and heating systems have not been tested and therefore no warranties can be given as to their good working order

MARSH &  
PARSONS