



Queensland Road, N7

£484 Per week

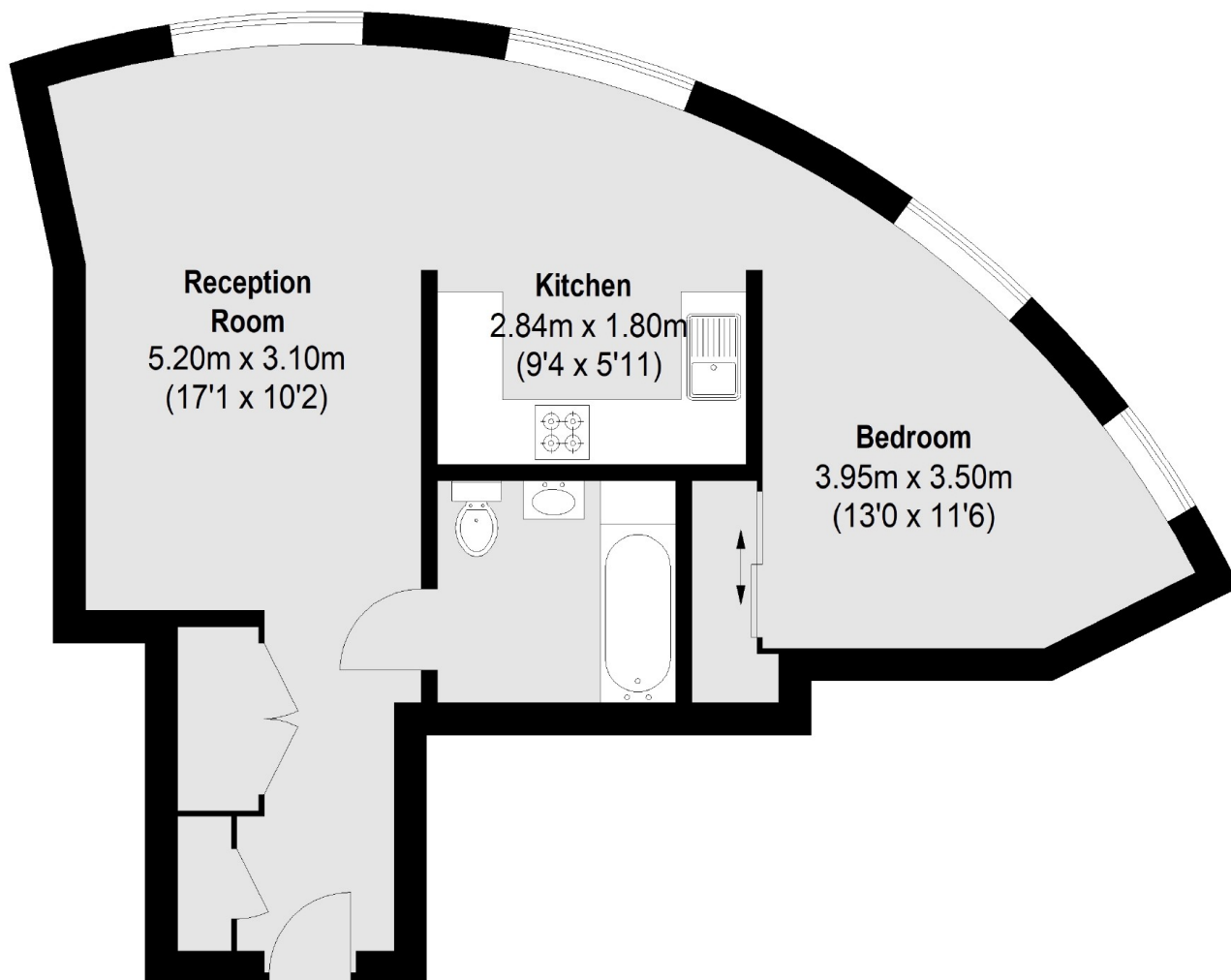
A stunning one bedroom 9th floor apartment in a modern development with amazing panoramic City views. A sizable living space, modern fitted kitchen, double bedroom with built in wardrobes, tiled bathroom, and hard wood floors throughout.

A short walk to Holloway Road Station (Piccadilly line) this flat is two stops from King's Cross meaning it's just an hour to Paris on the Eurostar.

Features

Stunning Apartment
Modern Development
Panoramic City Views
Hard Wood Floors
24 Hour Concierge
Residents Gym

Queensland Road, London, N7



Total area (approx.): 52.93 sq. m (570 Sq. ft)