



## Thorpebank Road, W12

£4,000 Per calendar month

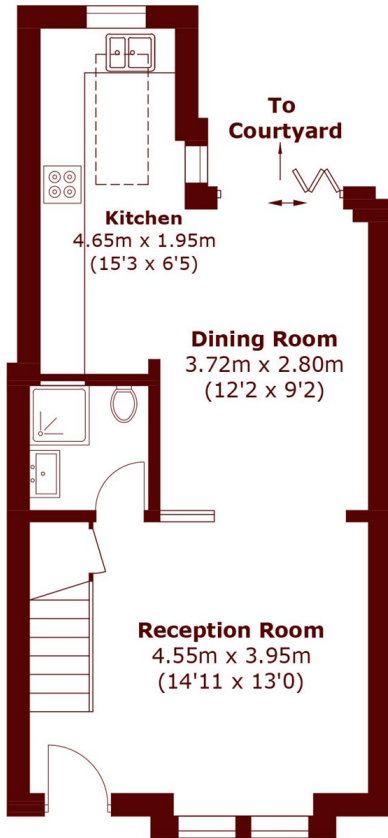
A newly refurbished, top spec, three double bedroom house located on a residential street in Shepherds Bush, benefiting from a large open plan living area and eat in kitchen, leading out to a private garden.

Thorpebank Road is in a family area, while also attracting young professionals. There is easy access to a local park as well as excellent access to the local amenities of Shepherd's Bush.

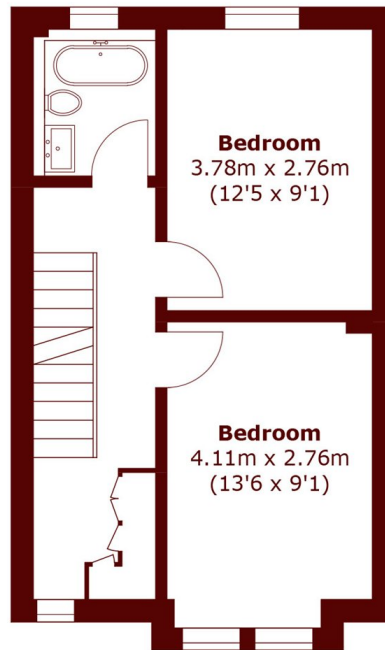
### Features

- Three Double Bedroom House
- Top Spec
- Private Patio
- Quiet Road
- Flexible Furnishing
- Ample Storage

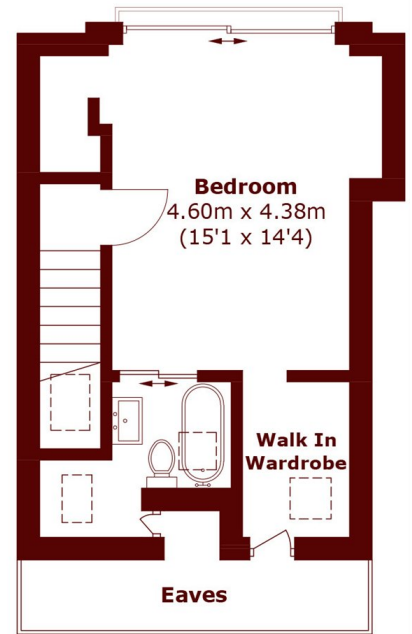
Thorpebank Road,  
London, W12



**Ground Floor**



**First Floor**



**Second Floor**

Total area (approx.): 104.2 sq. m (1,121.6 sq. ft)  
(Excluding Eaves)