



Connells

Harrowden Road
Bedford



Property Description

****Beautifully Extended Three-Bedroom Semi-Detached Home - Must Be Viewed****

Situated in a highly convenient location close to a wealth of local amenities and offering excellent road links, this beautifully extended three-bedroom semi-detached property presents an ideal opportunity for families and professionals alike.

The ground floor has been thoughtfully reconfigured to create a superb open-plan living space to the rear, featuring a modern kitchen seamlessly flowing into a dining area and spacious family room-perfect for both everyday living and entertaining. To the front of the property is a separate cosy living room.

Upstairs, the property boasts three well-proportioned bedrooms, including a generous principal bedroom with its own ensuite, alongside a stylish family bathroom serving the remaining rooms.

Externally, the home continues to impress with a private, enclosed rear garden-ideal for outdoor relaxation-as well as the added benefits of a garage and versatile outbuilding, offering excellent storage or potential for further use.

This fantastic home combines space, style, and practicality in a sought-after setting. Early viewing is highly recommended to fully appreciate all that is on offer



Ground Floor

Entrance Hall

Kitchen/Diner

Sitting Room

First Floor

Landing

Bedroom One

Ensuite

Bedroom Two

Bedroom Three

Bathroom

External

Storage

Front Garden

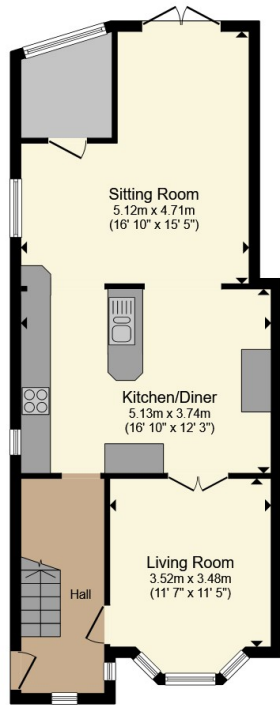
Rear Garden

Garage

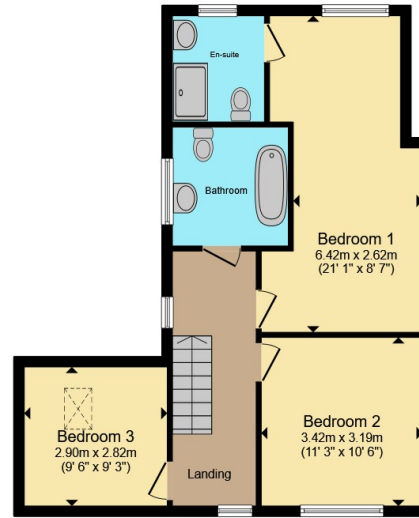




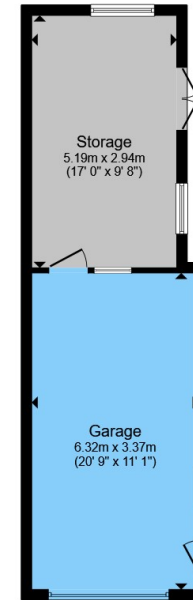




Ground Floor



First Floor



Outbuilding

Total floor area 157.7 m² (1,698 sq.ft.) approx

This floor plan is for illustrative purposes only. It is not drawn to scale. Any measurements, floor areas (including any total floor area), openings and orientation are approximate. No details are guaranteed, they cannot be relied upon for any purpose and they do not form part of any agreement. No liability is taken for any error, omission or misstatement. A party must rely upon its own inspection(s). Powered by www.propertybox.io



To view this property please contact Connells on

T 01234 345 303
E bedford@connells.co.uk

42 Allhallows
 BEDFORD MK40 1LN

EPC Rating: Awaited
 Council Tax Band: B

Tenure: Freehold

view this property online connells.co.uk/Property/BED313068



1. MONEY LAUNDERING REGULATIONS Intending purchasers will be asked to produce identification documentation at a later stage and we would ask for your co-operation in order that there will be no delay in agreeing the sale. 2. These particulars do not constitute part or all of an offer or contract. 3. The measurements indicated are supplied for guidance only and as such must be considered incorrect. Potential buyers are advised to recheck measurements before committing to any expense. 4. We have not tested any apparatus, equipment, fixtures, fittings or services and it is in the buyers interest to check the working condition of any appliances.

Connells Residential is registered in England and Wales under company number 1489613, Registered Office is Cumbria House, 16-20 Hockliffe Street, Leighton Buzzard, Bedfordshire, LU7 1GN. VAT Registration Number is 500 2481 05.

See all our properties at www.connells.co.uk | www.rightmove.co.uk | www.zoopla.co.uk

Property Ref: BED313068 - 0002