

CHRISTOPHER HODGSON



Whitstable

£400,000 Freehold



Whitstable

70 Tradewinds, Whitstable, Kent, CT5 4UJ

An extended and beautifully presented family home situated on a quiet cul-de-sac within this favoured modern development. The property is conveniently positioned for access to Whitstable's bustling town centre and mainline railway station (2 miles), and within close proximity to supermarkets and Estuary View Medical Centre.

The generously proportioned accommodation is arranged on the ground floor to provide an entrance hall, a generous living room with a wood-burning stove and bi-folding doors leading to a smartly fitted kitchen/breakfast room with a range of integrated appliances, a utility room, and a cloakroom.

The first floor comprises three double bedrooms, and a stylish bathroom with a separate shower enclosure. The principal bedroom benefiting from a walk in wardrobe.

The thoughtfully landscaped and well maintained rear garden has been designed for ease of maintenance and extends to 33ft (10m). A block paved driveway provides an area of off-street parking.



LOCATION

Tradewinds forms part of Mariners View, a desirable modern development situated on the outskirts of Whitstable, an increasingly popular and fashionable town by the sea which enjoys a variety of shopping, educational and leisure amenities including sailing, watersports and bird watching, as well as the seafood restaurants for which it has become renowned. Mainline rail services can also be found at Whitstable offering fast and frequent services to London (Victoria approximately 84mins) with high speed links to London (St Pancras) (approximately 77mins). The A299 is also easily accessible offering access to the A2/M2 linking to the channel ports and subsequent motorway network.

ACCOMMODATION

The accommodation and approximate measurements (taken at maximum points) are:

GROUND FLOOR

- Entrance Hall
- Living Room 21'6" x 18'0" (6.56m x 5.49m)
- Kitchen/Breakfast Room 18'9" x 9'6" (5.72m x 2.9m)
- Utility Room 5'6" x 8'10" (1.68m x 2.7m)

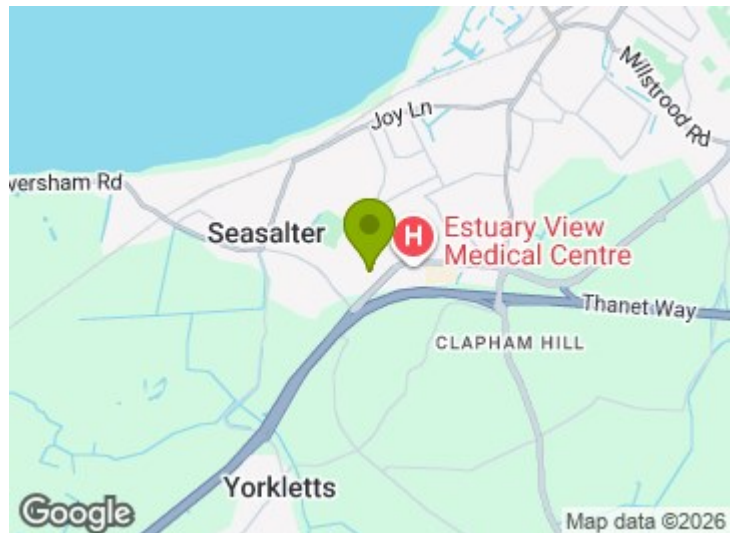
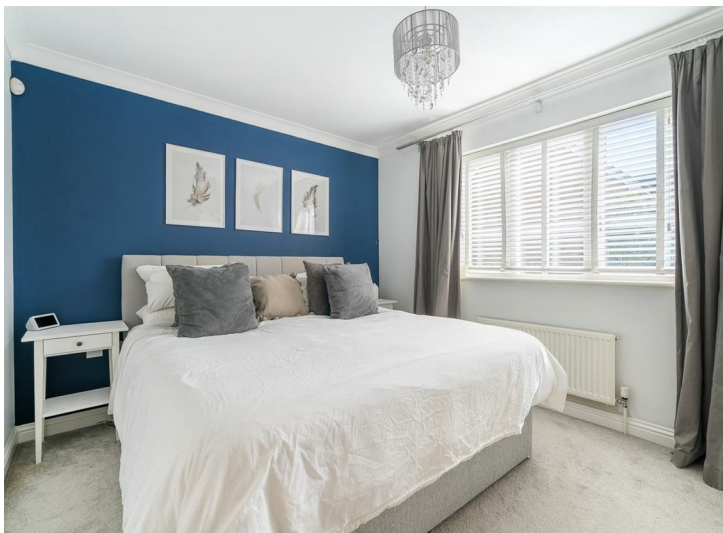
- Cloakroom

FIRST FLOOR

- Bedroom 1 12'4" x 9'9" (3.76m x 2.98m)
- Walk-in-wardrobe
- Bedroom 2 13'6" x 8'3" (4.12m x 2.54m)
- Bedroom 3 12'4" x 8'5" (3.76m x 2.57m)
- Bathroom

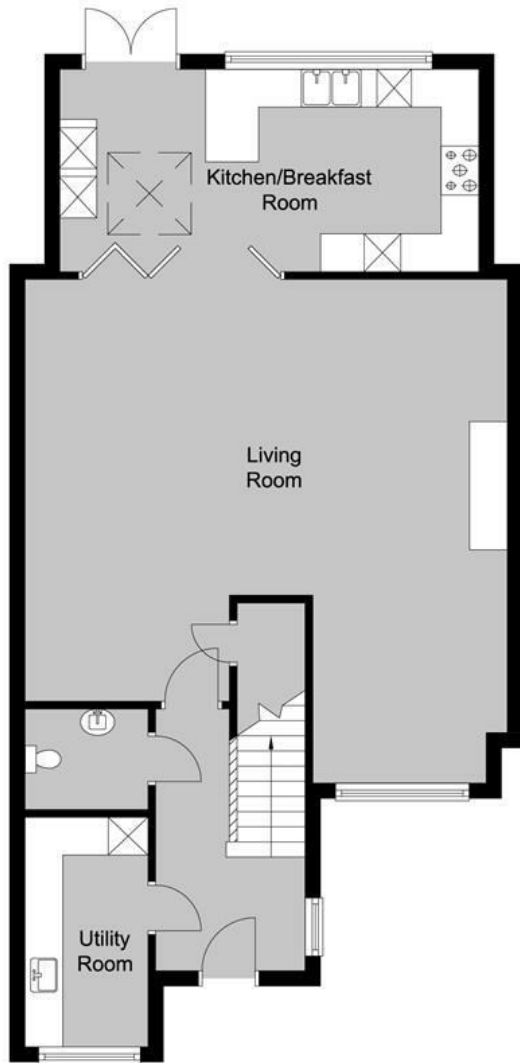
OUTSIDE

- Garden 23'4" x 21' (7.11m x 6.40m)



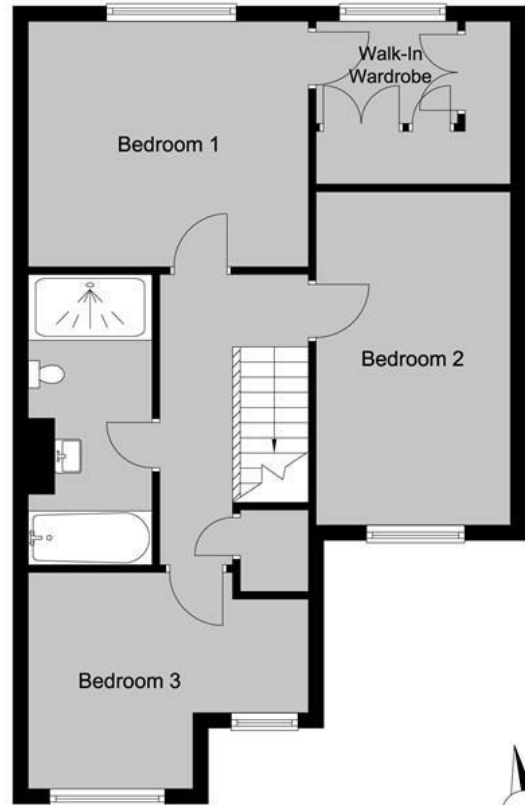
Ground Floor

Main area: approx. 68.3 sq. metres (735.3 sq. feet)



First Floor

Main area: approx. 53.7 sq. metres (578.1 sq. feet)



Main area: Approx. 122.0 sq. metres (1313.5 sq. feet)

Council Tax Band C. The amount payable under tax band C for the year 2026/2027 is £2,131.55.

Christopher Hodgson Estate Agents for itself and as for the vendor or lessor (as appropriate) gives notice that: 1 These particulars are only a general outline for the guidance of intending purchasers or lessees and do not constitute in whole or in part an offer or a Contract. 2 Reasonable endeavours have been made to ensure that the information given in these particulars is materially correct but any intending purchaser or lessee should satisfy themselves by inspection, searches, enquiries and survey as to the correctness of each statement. 3 All statements in these particulars are made without responsibility on the part of Christopher Hodgson Estate Agents or the vendor or lessor. 4 No statement in these particulars is to be relied upon as a statement or representation of fact. 5 Neither Christopher Hodgson Estate Agents nor anyone in its employment or acting on its behalf has authority to make any representation or warranty in relation to this property. 6 Nothing in these particulars shall be deemed to be a statement that the property is in good repair or condition or otherwise nor that any services or facilities are in good working order. 7 Photographs may show only certain parts and aspects of the property at the time when the photographs were taken and you should rely upon actual inspection. 8 No assumption should be made in respect of parts of the property not shown in photographs. 9 Any areas, measurements or distances are only approximate. 10 Any reference to alterations or use is not intended to be a statement that any necessary planning, building regulation, listed building or any other consent has been obtained. 11 Amounts quoted are exclusive of VAT if applicable. 12 Whilst reasonable endeavours have been made to ensure the accuracy of any floor plan contained in these particulars, all measurements and areas are approximate and no responsibility is taken for any error, omission or mis-statement. This plan is for illustrative purposes only and should be used as such by any prospective purchaser. 13 Any mapping contained within these particulars is for illustrative purposes only and should be used as such by any prospective purchaser. No responsibility is taken for any error, omission or mis-statement. 14 Any computer generated images contained within these particulars are for illustrative purposes only and should be used as such by any prospective purchaser.

Energy Efficiency Rating	
Current Rating: A	Potential Rating: B
Energy Efficiency Score: 75	Environmental Impact Score: 85
Energy Efficiency Scale: A	Environmental Impact Scale: A
Energy Efficiency Scale: B	Environmental Impact Scale: B
Energy Efficiency Scale: C	Environmental Impact Scale: C
Energy Efficiency Scale: D	Environmental Impact Scale: D
Energy Efficiency Scale: E	Environmental Impact Scale: E
Energy Efficiency Scale: F	Environmental Impact Scale: F
Energy Efficiency Scale: G	Environmental Impact Scale: G

England & Wales

95-97 TANKERTON ROAD, WHITSTABLE CT5 2AJ | CHRISTOPHERHODGSON.CO.UK

