



**Connells**

Hawthorn Drive  
Harrow



### Property Description

Connells are delighted to present this extended three bedroom semi-detached family home, ideally located on the popular Hawthorn Drive in Harrow. Offering generous and versatile living accommodation, this property is perfectly suited for growing families seeking both space and convenience.

The ground floor comprises a bright and spacious front reception room, ideal for relaxing, along with an additional second reception room providing flexible space for dining or entertaining. To the rear, a conservatory overlooks the garden, creating a pleasant additional living area filled with natural light.

The property also benefits from a well-appointed kitchen with ample storage and workspace. Upstairs there are three well-proportioned bedrooms, offering comfortable accommodation along with a shower room.

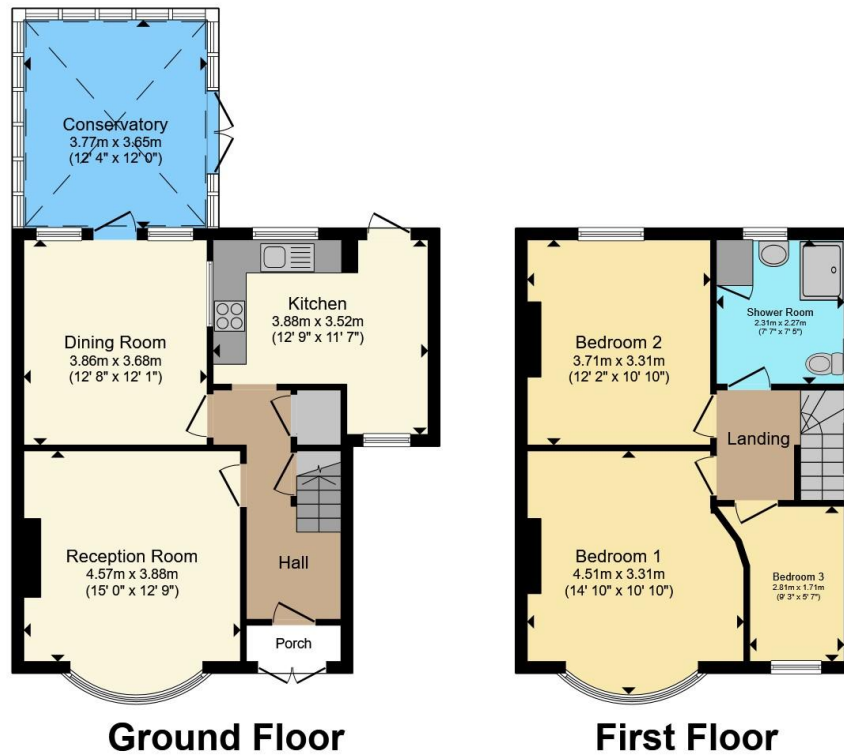
Externally, the home features a private rear garden, perfect for outdoor enjoyment and entertaining. To the front, there is a driveway providing off-street parking, adding to the property's appeal.

Situated in a sought-after residential area, Hawthorn Drive is conveniently located close to local amenities, reputable schools and excellent transport links, providing easy access to Harrow town centre and beyond.

Early viewing is highly recommended to fully appreciate the space, potential and location this fantastic home has to offer.







Total floor area 106.7 m<sup>2</sup> (1,148 sq.ft.) approx

This floor plan is for illustrative purposes only. It is not drawn to scale. Any measurements, floor areas (including any total floor area), openings and orientation are approximate. No details are guaranteed, they cannot be relied upon for any purpose and they do not form part of any agreement. No liability is taken for any error, omission or misstatement. A party must rely upon its own inspection(s). Powered by www.propertybox.io



To view this property please contact Connells on

**T 020 8427 4321**  
**E harrow@connells.co.uk**

182 Station Road  
 HARROW HA1 2RH

EPC Rating: D Council Tax  
 Band: E

**view this property online [connells.co.uk/Property/HRW313160](https://www.connells.co.uk/Property/HRW313160)**

Tenure: Freehold



1. MONEY LAUNDERING REGULATIONS Intending purchasers will be asked to produce identification documentation at a later stage and we would ask for your co-operation in order that there will be no delay in agreeing the sale. 2. These particulars do not constitute part or all of an offer or contract. 3. The measurements indicated are supplied for guidance only and as such must be considered incorrect. Potential buyers are advised to recheck measurements before committing to any expense. 4. We have not tested any apparatus, equipment, fixtures, fittings or services and it is in the buyers interest to check the working condition of any appliances.

Connells Residential is registered in England and Wales under company number 1489613, Registered Office is Cumbria House, 16-20 Hockliffe Street, Leighton Buzzard, Bedfordshire, LU7 1GN. VAT Registration Number is 500 2481 05.

**See all our properties at [www.connells.co.uk](https://www.connells.co.uk) | [www.rightmove.co.uk](https://www.rightmove.co.uk) | [www.zoopla.co.uk](https://www.zoopla.co.uk)**

Property Ref: HRW313160 - 0002