



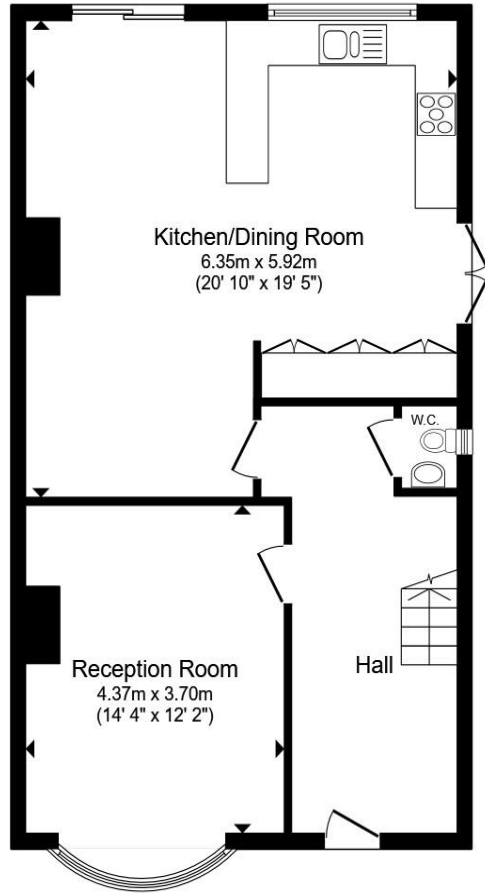
Highfields, Cardiff CF5 2QB

welcome to

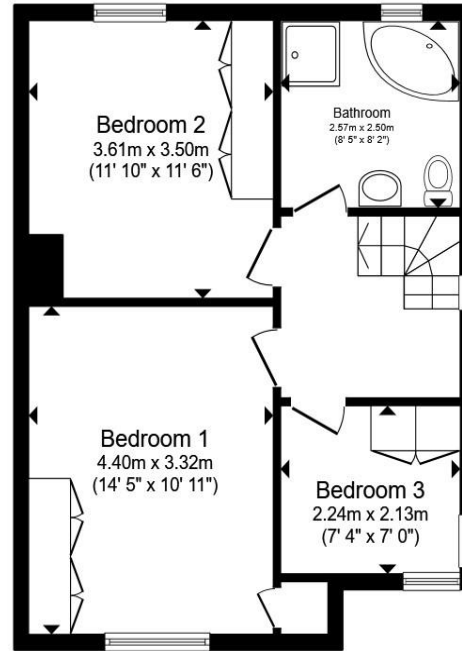
Highfields, Cardiff

Attractive mock Tudor three-bedroom semi-detached home in the sought-after Highfields location in Llandaff, close to the Highfields Steps, transport links & local schools. Well-presented throughout, with a wrap-around garden featuring a summer house with electricity and Wi-Fi, & a private driveway.





Ground Floor



First Floor

Total floor area 116.8 m² (1,257 sq.ft.) approx

This floor plan is for illustrative purposes only. It is not drawn to scale. Any measurements, floor areas (including any total floor area), openings and orientation are approximate. No details are guaranteed, they cannot be relied upon for any purpose and they do not form part of any agreement. No liability is taken for any error, omission or misstatement. A party must rely upon its own inspection(s). Powered by www.propertybox.io



Entrance Hall

Reception Room

14' 4" Max x 12' 2" Max (4.37m Max x 3.71m Max)

Kitchen / Dining Room

20' 1" Max x 19' 5" Max (6.12m Max x 5.92m Max)

Landing

Bedroom One

14' 5" Max x 10' 11" Max (4.39m Max x 3.33m Max)

Bedroom Two

11' 10" Max x 11' 6" Max (3.61m Max x 3.51m Max)

Bedroom Three

7' 4" Max x 7' Max (2.24m Max x 2.13m Max)

Bathroom

8' 5" Max x 8' 2" Max (2.57m Max x 2.49m Max)

Loft Space

Front Garden

Rear Garden

Summer House

Additional Features

Transport Links

Schools

welcome to

Highfields, Cardiff

- Attractive mock Tudor three-bedroom semi-detached home in a highly sought-after Highfields location in Llandaff
- Wrap-around garden with electrified summer house, complete with Wi-Fi - ideal for home working, hobbies or relaxation
- Private driveway providing off-road parking
- Excellent transport links and access to well-regarded local schools, just moments from the Highfields Steps
- 2 Secure Asgard Metal sheds for 3 bikes and gardening equipment

Tenure: Freehold EPC Rating: C

Council Tax Band: F

£600,000



Please note the marker reflects the postcode not the actual property

view this property online allenandharris.co.uk/Property/CRP108131



Property Ref:
CRP108131 - 0006

1. MONEY LAUNDERING REGULATIONS Intending purchasers will be asked to produce identification documentation at a later stage and we would ask for your co-operation in order that there is no delay in agreeing the sale. 2. These particulars do not constitute part or all of an offer or contract. 3. The measurements indicated are supplied for guidance only and as such must be considered incorrect. Potential buyers are advised to recheck measurements before committing to any expense. 4. We have not tested any apparatus, equipment, fixtures or services and it is in the buyers interest to check the working condition of any appliances. 5. Where an EPC, or a Home Report (Scotland only) is held for this property, it is available for inspection at the branch by appointment. If you require a printed version of a Home Report, you will need to pay a reasonable production charge reflecting printing and other costs. 6. We are not able to offer an opinion either written or verbal on the content of these reports and this must be obtained from your legal representative. 7. Whilst we take care in preparing these reports, a buyer should ensure that his/her legal representative confirms as soon as possible all matters relating to title including the extent and boundaries of the property and other important matters before exchange of contracts.

Allen & Harris is a trading name of Sequence (UK) Limited which is registered in England and Wales under company number 4268443, Registered Office is Cumbria House, 16-20 Hockliffe Street, Leighton Buzzard, Bedfordshire, LU7 1GN. VAT Registration Number is 500 2481 05.


allen & harris



029 2022 5700



Pontcanna@allenandharris.co.uk



209 Cathedral Road, Pontcanna, CARDIFF,
South Glamorgan, CF11 9PN



allenandharris.co.uk