





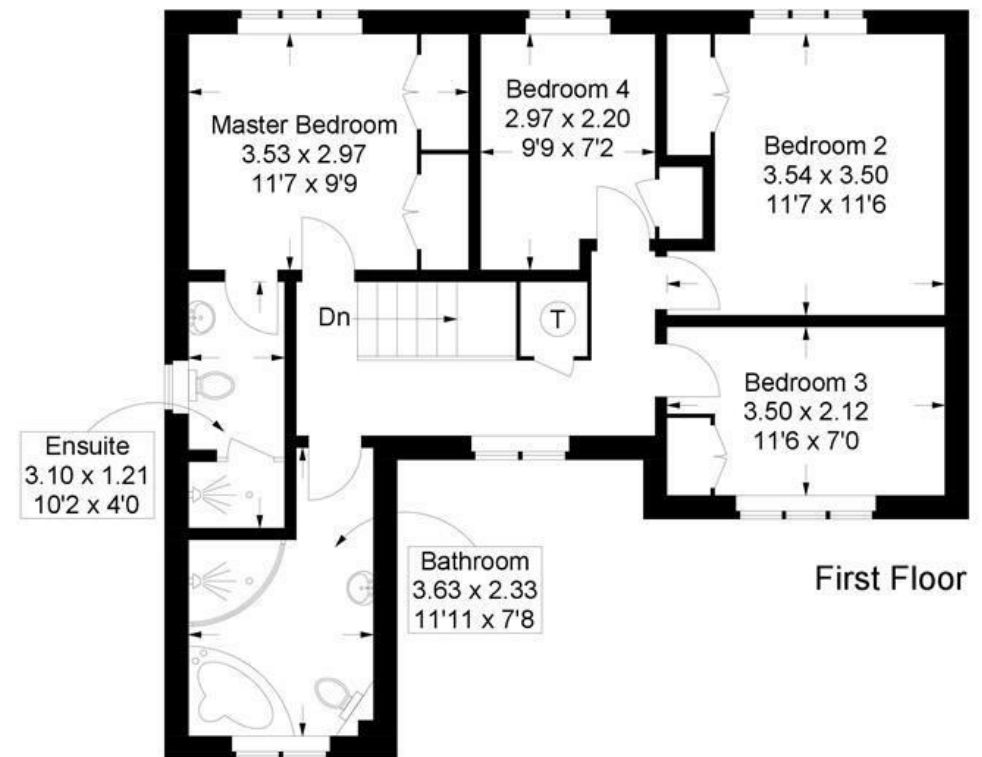
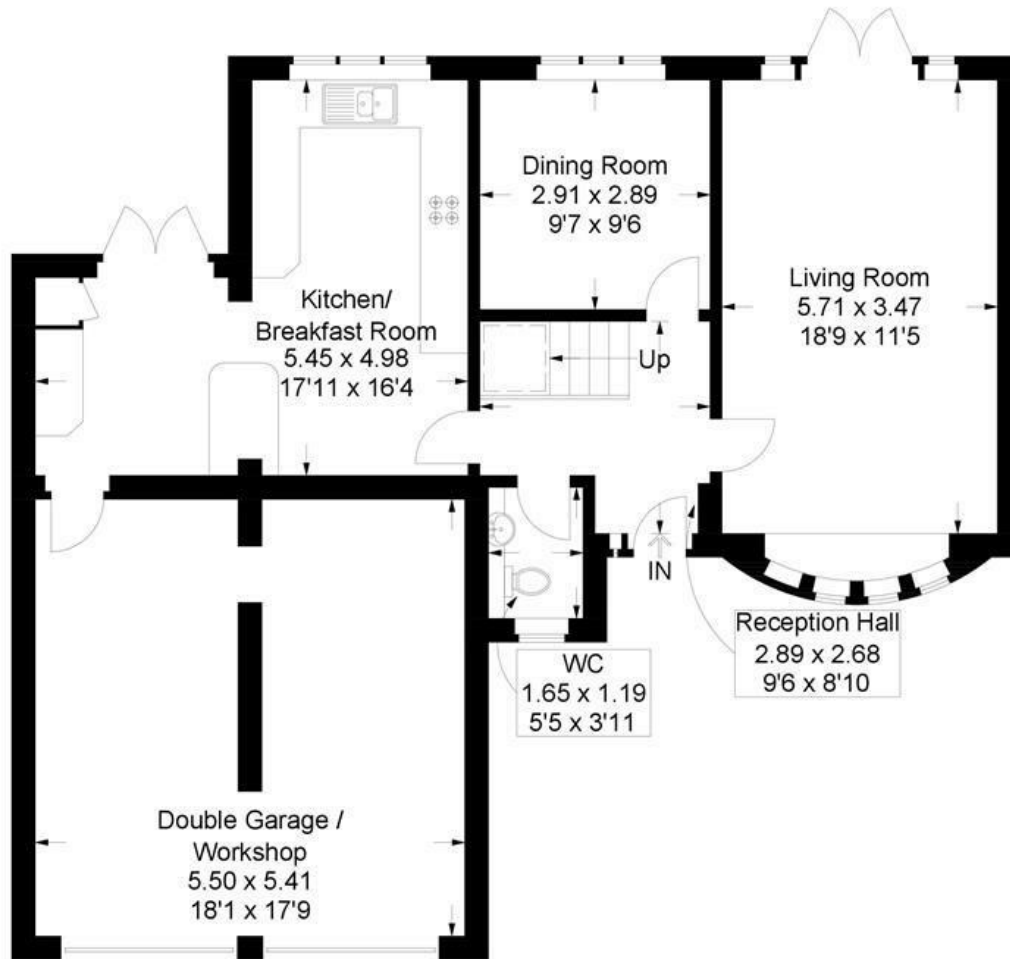
This spacious four-bedroom detached home is located in a peaceful cul-de-sac in the sought-after area of Purbrook, Waterlooville. Offering a generous layout and versatile living spaces, this property is ideal for growing families or those seeking additional room to entertain, work, or relax. From its elegant façade to the well-planned interiors, this home blends comfort with functionality, making it a standout opportunity in a desirable residential neighbourhood.


- SPACIOUS FOUR BEDROOM HOUSE
- LARGE LIVING ROOM AREA
- MODERN KITCHEN/BREAKFAST ROOM
- SEPARATE DINING ROOM SPACE
- EN-SUITE TO MASTER BEDROOM
- FAMILY BATHROOM UPSTAIRS
- DOWNSTAIRS WC FOR CONVENIENCE
- DOUBLE GARAGE WITH WORKSHOP
- PRIVATE REAR GARDEN SPACE
- QUIET CUL-DE-SAC LOCATION



Mallow Close, Purbrook

Approximate Gross Internal Area = 153.1 sq m / 1648 sq ft
(Excluding Reduced Headroom / Eaves)
Reduced Headroom = 0.6 sq m / 6 sq ft
Total = 153.7 sq m / 1654 sq ft



 = Reduced headroom below 1.5m / 5'0

This plan is for layout guidance only. Not drawn to scale unless stated. Windows and door openings are approximate. Whilst every care is taken in the preparation of this plan, please check all dimensions, shapes and compass bearings before making any decisions reliant upon them.