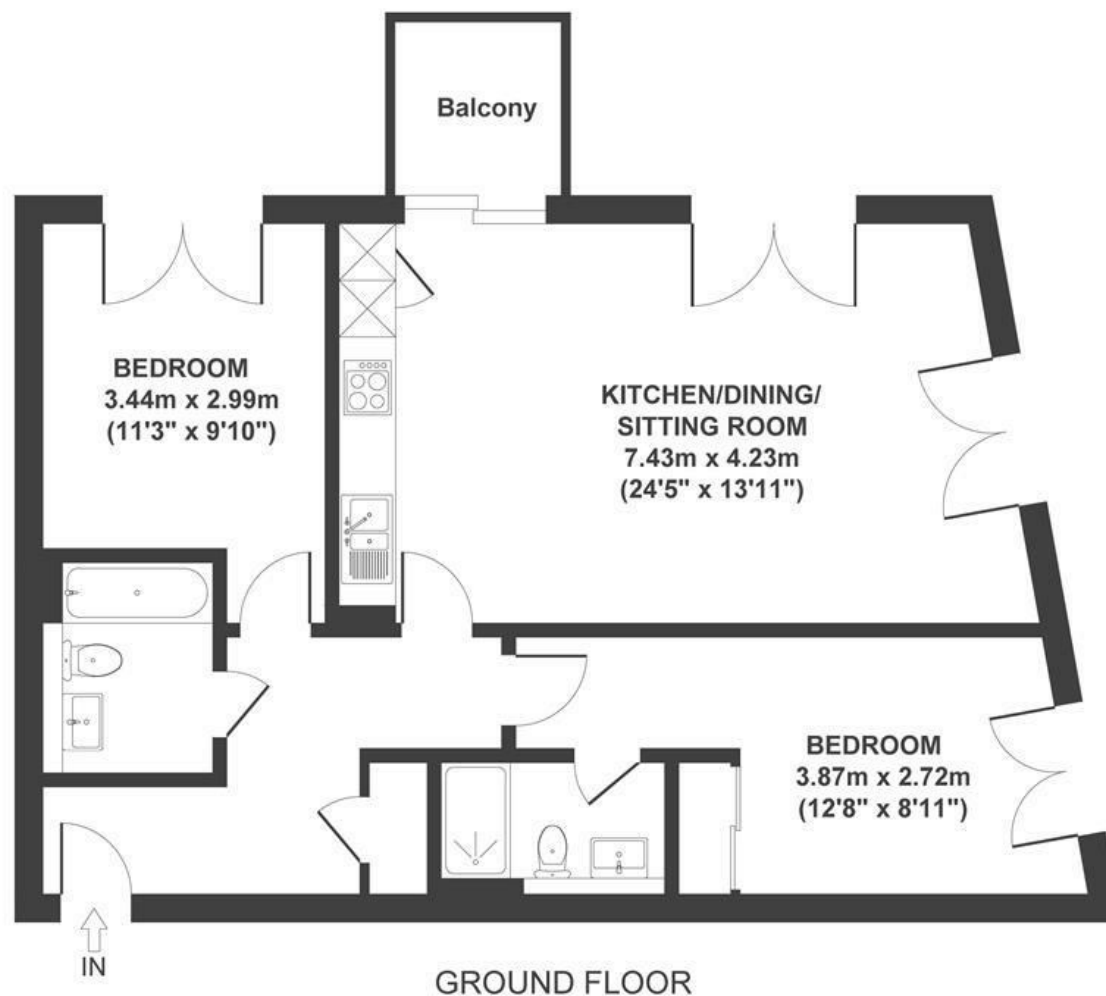


Sugar House

REDCLIFF

APPROXIMATE FLOOR AREA
78 SQM / 843 SQFT



Boardwalk

French Yard , BRISTOL



£375,000



2 Bedrooms



BS1 6SZ



2 Bathrooms

“We love how peaceful our home feels whilst being in such a central location. Evenings on the balcony are a favourite, and living by the Harbourside means great walks, jogging routes, and amazing food on our doorstep.”

