



27 BLACKDEN WALK WILMSLOW SK9 2EL

This first-floor maisonette style apartment enjoys its own private access and balcony. Being only a short drive away from Wilmslow centre and the train station and with Manchester International Airport and the motorway networks both within easy reach this apartment is ideal for either a single person or couple.

Private entrance vestibule with stairs leading to the first floor, entrance hallway with fitted storage cupboards, living room with access to balcony, modern fitted kitchen with gas hob and electric oven, light and airy double bedroom and a modern shower room.

Gas Central Heating

VIEWING RECOMMENDED

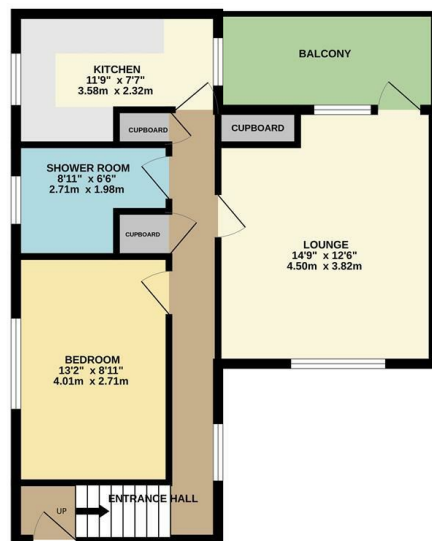
Contact Wilmslow 01625 536300 £950.00pcm

COUNCIL TAX A

EPC D



GROUND FLOOR



Measurements are approximate. Not to scale. Illustrative purposes only. Made with Floorplan 3.0.0.0

- APARTMENT
- MAISONETTE
- PRIVATE ENTRANCE
- BALCONY
- GAS CENTRAL HEATING
- COUNCIL TAX A
- EPC D

