

3 The Emery, Chantry Road

Bishop's Stortford

Welcome to The Emery. A superb two bedroom luxury apartment set within Emery House - a converted Victorian villa with a contemporary courtyard addition. Mere moments from the town centre, this gated development in the much sought-after north end of Bishop's Stortford, is a superb place to call home.

Council Tax band: D

Tenure: Share of Freehold

- Luxury Two Bedroom Apartment
- Chain Free
- Ensuite Shower & Dressing Room
- Enclosed Outdoor Patio
- Underfloor Heating
- Gated Development with Parking
- Sought-after location close to Town Centre



Kitchen / Diner

13' 2" x 14' 6" (4.01m x 4.41m)

Living Room

13' 2" x 13' 5" (4.01m x 4.10m)

Bedroom

12' 2" x 12' 10" (3.70m x 3.92m)

Dressing Area

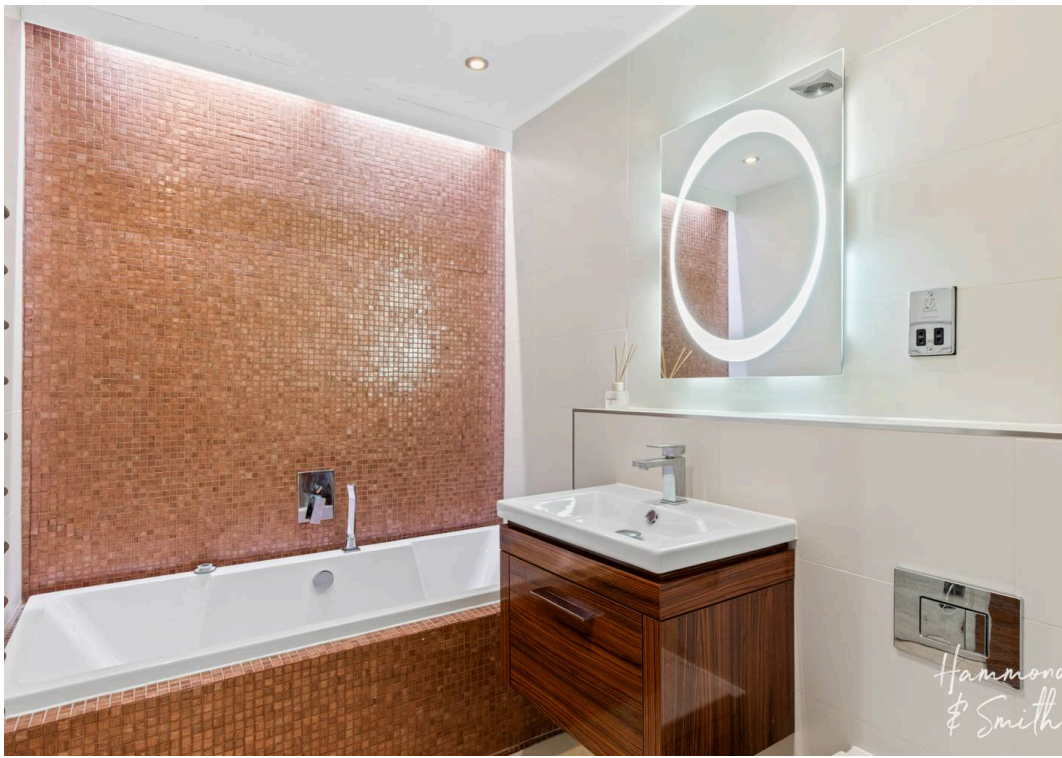
Ensuite Shower Room

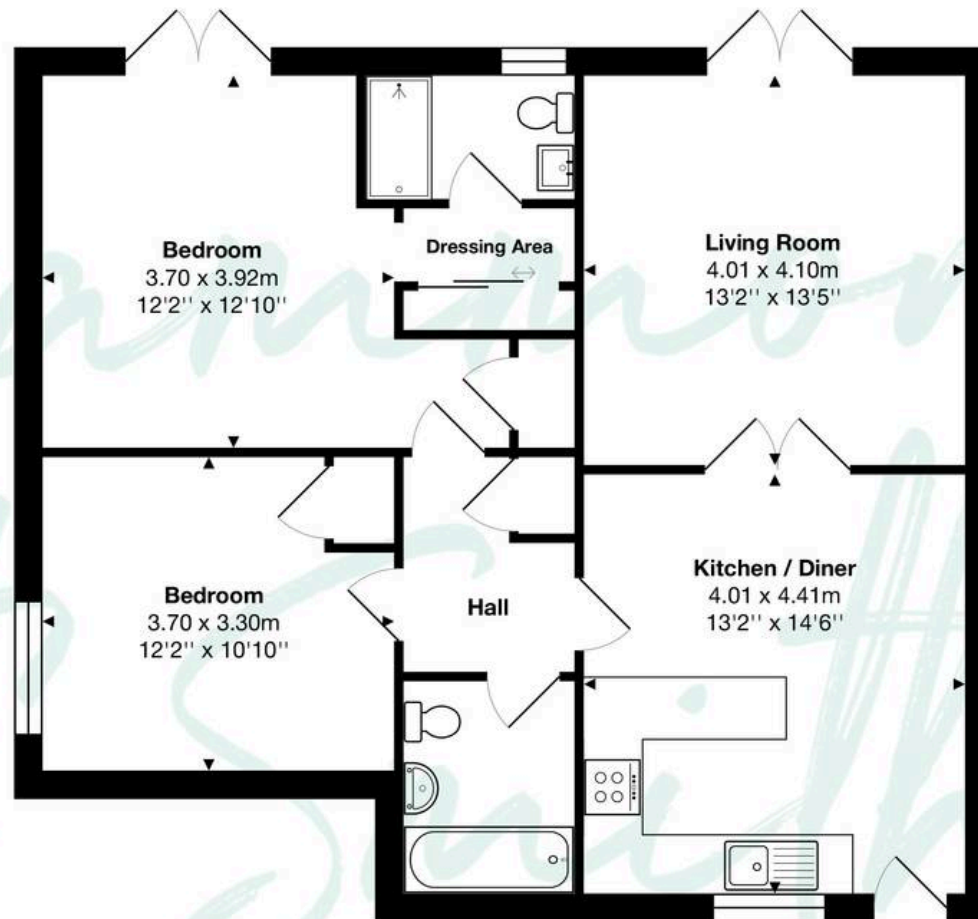
Bedroom

12' 2" x 10' 10" (3.70m x 3.30m)

Bathroom







Total Area: approx. 78.7 m² ... 847 ft²

THE FLOORPLAN IS FOR ILLUSTRATIVE PURPOSES ONLY AND IS NOT TO SCALE.
Measurements and features are approximate and may differ from the actual property. Verify all details independently; no liability is accepted for errors or omissions.

Property marketing provided by www.fotomarketing.co.uk