

whiteley helyar



*1,388 sq ft plus
approx. 375 sq ft
roof terrace*



2 bedrooms



*en-suite bathroom
& shower room*



*two secure
allocated
spaces*

Guide Price £1,100,000

51 Sovereign Point, Bath, BA2 3GJ

A stunning, two bedroom two bathroom penthouse apartment (accessed via lift) in this flagship building, with private outdoor space and parking, within the prestigious Western Riverside development. Just a short stroll from the city centre, and sitting adjacent to the newly created Elizabeth Park, the apartment offers incredible panoramic views and has access to both a wrap around balcony and roof terrace, along with two allocated spaces in the gated underground carpark and secure bicycle storage.

ACCOMMODATION

Open plan sitting/dining room with stunning southerly views and access to the balcony
Contemporary kitchen with island and breakfast bar
Study/playroom
Principal bedroom with dressing area and en-suite bathroom
Further double bedroom with en-suite shower room
Utility room & separate cloakroom

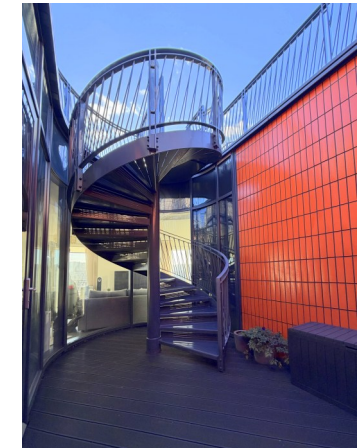
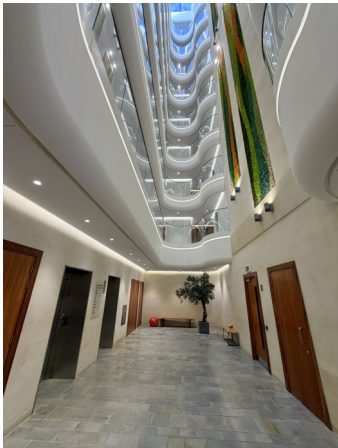
EXTERNALLY

A spacious balcony is accessed from both the sitting and dining areas, and offers a wonderful spot to enjoy the southerly and westerly aspects. A central courtyard holds a spiral staircase, which leads up to the roof terrace on the very top of the building, which is private to this apartment and from which you can enjoy staggering 360 degree views of the city.

LOCATION

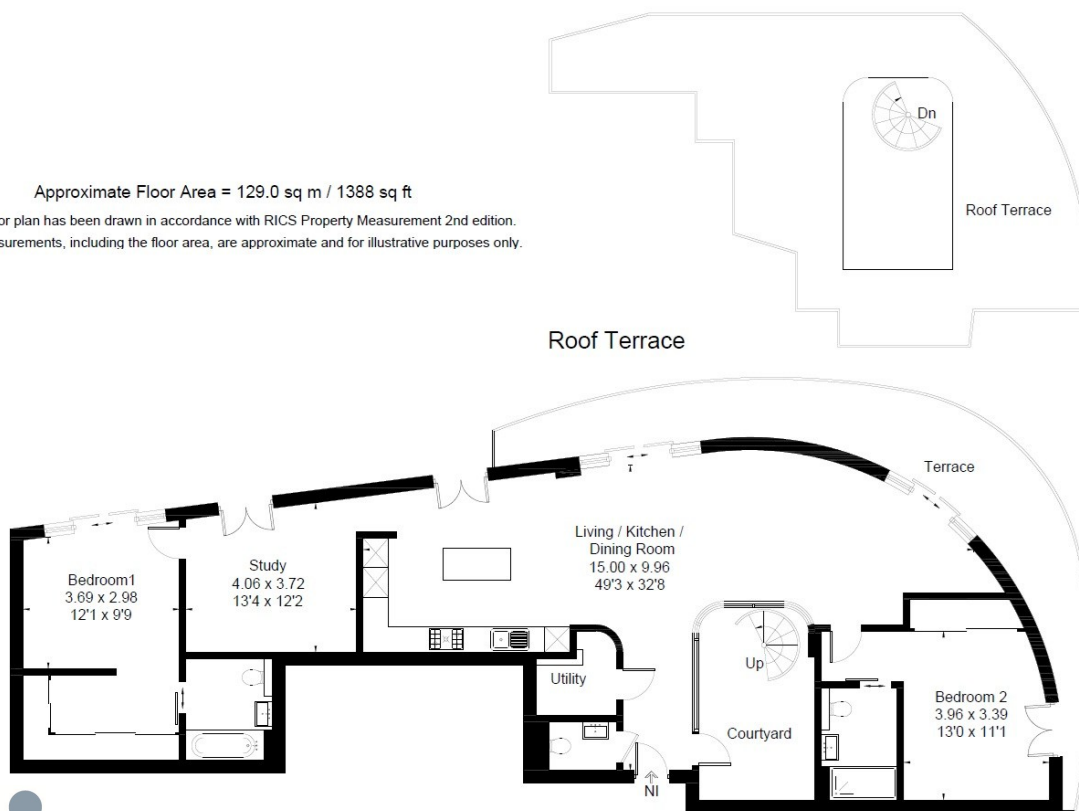
This riverside development sits immediately to the west of the city centre, and has created a new waterfront, mainly residential, neighbourhood complete with an attractive new park. Coffee shops are on the ground floor of both Sovereign Point and the neighbouring Royal View, whilst Sainsburys supermarket is a short walk away. The city centre, with all the shops and amenities, Recreation Ground and Bath Spa railway station is just over half a mile away; whilst highly regarded local schools, both primary and secondary, are also close by.





Approximate Floor Area = 129.0 sq m / 1388 sq ft

This floor plan has been drawn in accordance with RICS Property Measurement 2nd edition.
All measurements, including the floor area, are approximate and for illustrative purposes only.



Tenure: Leasehold
Lease length: 992 years
Service charge: £400 per month
Council Tax Band: 'G' - £3,690.90

