

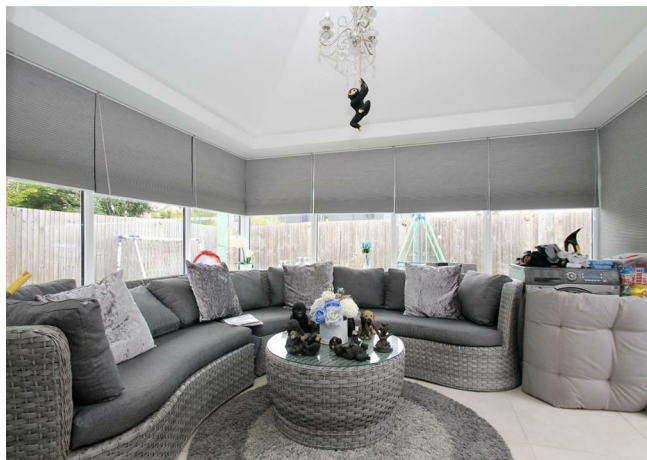
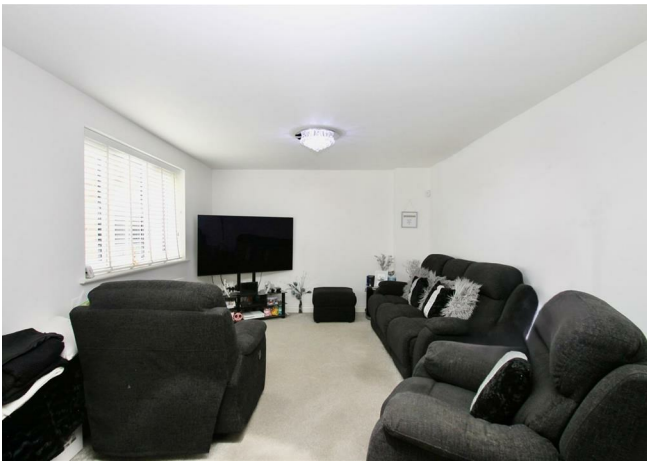


Lodge Close, Allington, Maidstone, , ME16 0ZY  
Offers In The Region Of £525,000



This well-presented, four-bedroom detached house is located in the popular Allington area, part of a modern development of just eight houses built in 2018. The property benefits from the remainder of the new build warranty and offers a spacious interior with a double garage and a generously sized driveway that can accommodate up to four cars. On the ground floor, the property features a welcoming entrance hall, a cloakroom/WC, a good-sized lounge, and a bright conservatory. The heart of the home is the spacious kitchen/dining room, which boasts granite worktops, integrated appliances, and ample cupboard space. Upstairs, the landing leads to a master bedroom with its own en-suite shower room/WC, along with three further bedrooms and a family bathroom. Externally, the driveway leads to a detached garage with an electric roller door. The current owner has boarded the loft of the garage, providing additional useful storage space accessed via a drop-down ladder. Side pedestrian access takes you to a pleasant, low-maintenance rear garden.

The property is ideally located within close proximity to the Mid Kent Shopping Centre, local schools, and offers easy access to Junction 5 of the M20, making it a highly convenient choice for families and commuters alike. Contact: PAGE & WELLS King Street office 01622 756703. Tenure: Freehold. EPC Rating: B. Council Tax Band: E.



**ACCOMMODATION**

**Ground Floor:**

**Cloakroom/WC**

**Entrance Hall**

**Living Room 23'x11'3 (7.01mx3.43m)**

**Conservatory 12'8 x 11'5 (3.86m x 3.48m)**

**Kitchen/Dining Room 15' x 14'7 (4.57m x 4.45m)**

**First Floor:**

**Landing**

**Principal Bedroom 14'11 x 9'3 (4.55m x 2.82m)**

**• En-suite Shower Room**

**Bedroom 10'8 x 9'4 (3.25m x 2.84m)**

**Bedroom 9'9 x 8'2 (2.97m x 2.49m)**

**Bedroom 11'4 x 7'8 (3.45m x 2.34m)**

**Family Bathroom**

**EXTERNALLY**

**Rear Garden**


**Driveway**

**Double Garage 18'5 x 17'7 (5.61m x 5.36m)**

**VIEWING**

Viewing strictly by arrangements with the Agent's Head  
Office: 52-54 King Street, Maidstone, Kent ME14 1DB.  
Tel: 01622 756703.

**Energy Efficiency Rating**

	Current	Potential
Very energy efficient - lower running costs		
(92 plus) <b>A</b>		<b>93</b>
(81-91) <b>B</b>	<b>83</b>	
(69-80) <b>C</b>		
(55-68) <b>D</b>		
(39-54) <b>E</b>		
(21-38) <b>F</b>		
(1-20) <b>G</b>		
Not energy efficient - higher running costs		
<b>England &amp; Wales</b>	EU Directive 2002/91/EC	

Page & Wells limited for themselves and for the vendors of this property whose agents they are give notice that: 1. These particulars do not constitute any part of, an offer or a contract. 2. All statements contained in these particulars as to this property are made without responsibility on the part of Page & Wells Limited or the Vendor. 3. None of the statements contained in these particulars as to the property is to be relied on as statements or representations of fact. 4. Any intending purchaser must satisfy himself by inspection or otherwise as to the correctness of each of the statements contained in these particulars. 5. The vendor does not make or give, and neither Page & Wells Limited nor any person in their employment has any authority to make or give any representation whatsoever in relation to this property. These particulars are supplied on the understanding that all negotiations are carried out throughout Page & Wells Limited. Properties with a reference prefixes EAA are those which Page & Wells Limited disclose an interest in accordance with the provisions of the Estates Agents Act 1979

### Ground Floor

Approx. 69.1 sq. metres (744.2 sq. feet)



### First Floor

Approx. 56.2 sq. metres (605.2 sq. feet)

