



Resident and visitor permit holders only
Mon - Sat
10 am - Noon
6.2 - 8 pm

Connells

Walton Road
Bushey



Property Description

A well-maintained three-bedroom semi-detached home offered in good condition throughout, ideally located within walking distance of Watford High Street and close to excellent transport links.

The accommodation comprises an entrance hall leading into the spacious living room, providing a comfortable space to relax. This room opens via glass-panelled doors into the conservatory, which enjoys an abundance of natural light and features stunning bi-fold doors, creating a superb indoor-outdoor living space. The conservatory connects via an archway to the dining room, which is also filled with natural light and ideal for entertaining. Flowing seamlessly from here is the modern kitchen, fitted with a range of wall and base units, an electric oven and gas hob, and space for a freestanding washing machine and fridge/freezer. A separate utility area provides additional space for appliances, including a washing machine and dryer. Completing the ground floor is a convenient downstairs cloakroom.

To the first floor, the property offers three bright and airy bedrooms, all finished with plush carpet underfoot, and served by a modern family bathroom suite comprising a bath with overhead shower, vanity sink, WC, contemporary white tiling, and a heated towel radiator.

Externally, the south-facing rear garden offers an impressive and private outdoor space, laid with a combination of astro turf and patio, and benefits from both rear and side access—ideal for entertaining and family use.

Entrance Hall

Door to front
Window to front
Radiator

Cloakroom

WC
Wash hand basin
Window to front

Lounge

Radiator
TV point

Dining Room

Window to rear
Radiator

Kitchen

Wall and base units
Window to side
Sink/drain
Gas hob and electric oven

Utility Room

Window to front
Space for washing machine and dryer

Conservatory

Bifold doors

Landing

Window to front

Radiator

Bedroom One

Window to rear

Radiator

Built in wardrobe

Bedroom Two

Window to rear

Radiator

Bedroom Three

Window to front

Radiator

Bathroom

WC

Wash hand basin

Bath/mixer taps with shower overhead

Heated towel radiator

Rear Garden

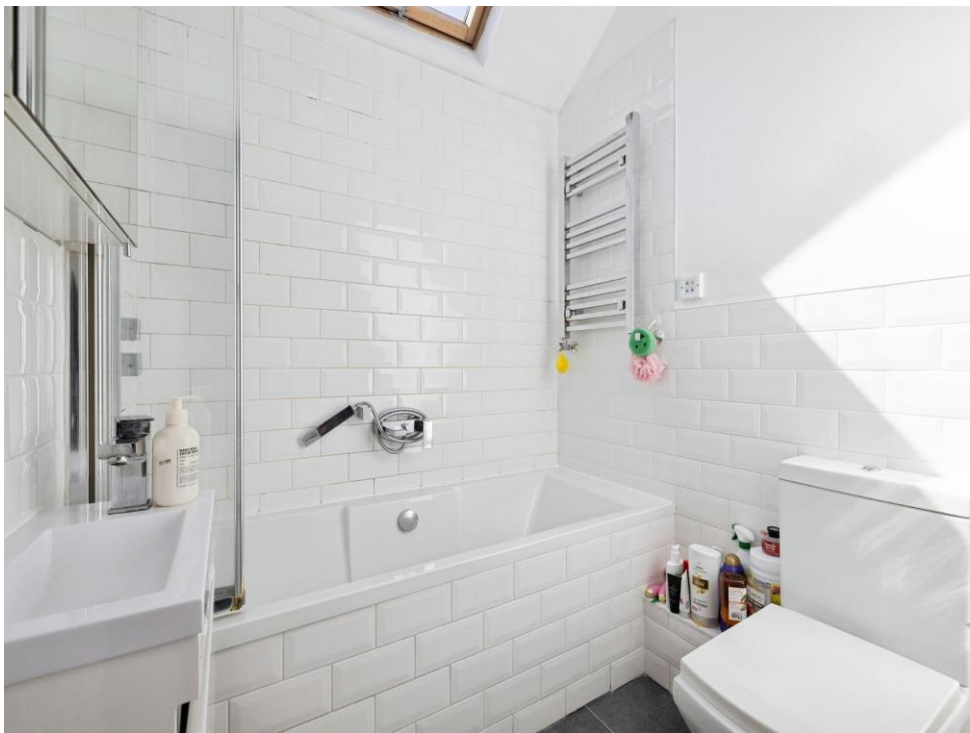
South facing

Astro

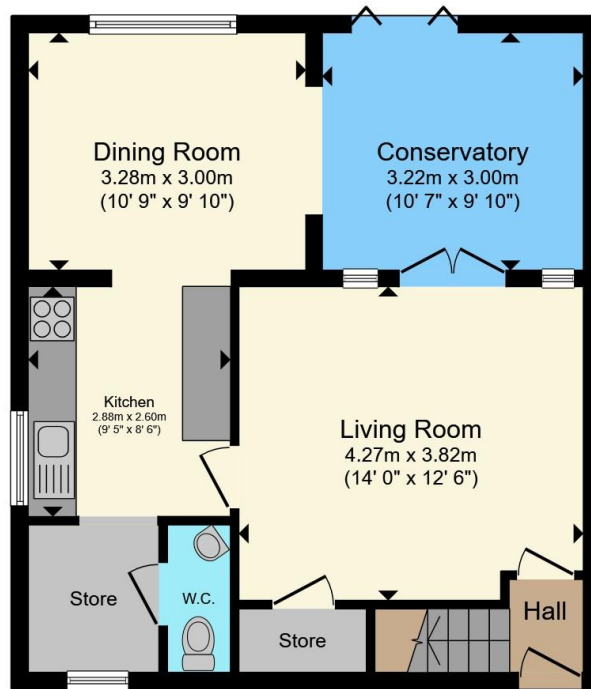
Patio

Rear and side access

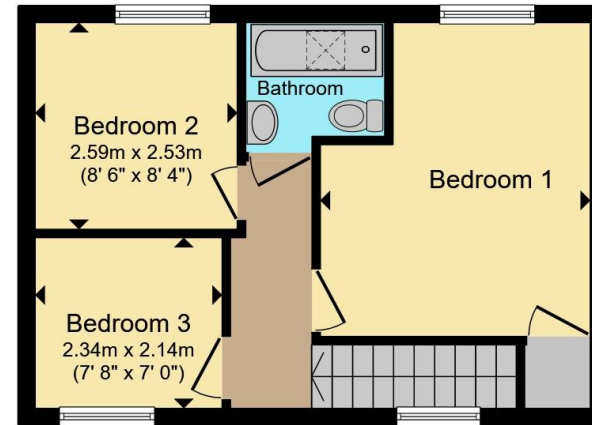








Ground Floor



First Floor

Total floor area 89.1 m² (959 sq.ft.) approx

This floor plan is for illustrative purposes only. It is not drawn to scale. Any measurements, floor areas (including any total floor area), openings and orientation are approximate. No details are guaranteed, they cannot be relied upon for any purpose and they do not form part of any agreement. No liability is taken for any error, omission or misstatement. A party must rely upon its own inspection(s). Powered by www.propertybox.io



To view this property please contact Connells on

T 020 8950 4404
E bushey@connells.co.uk

86 High Street
BUSHEY WD23 3HD

EPC Rating: D Council Tax
Band: D

Tenure: Freehold

view this property online connells.co.uk/Property/BUS308535



1. MONEY LAUNDERING REGULATIONS Intending purchasers will be asked to produce identification documentation at a later stage and we would ask for your co-operation in order that there will be no delay in agreeing the sale. 2. These particulars do not constitute part or all of an offer or contract. 3. The measurements indicated are supplied for guidance only and as such must be considered incorrect. Potential buyers are advised to recheck measurements before committing to any expense. 4. We have not tested any apparatus, equipment, fixtures, fittings or services and it is in the buyers interest to check the working condition of any appliances.

Connells Residential is registered in England and Wales under company number 1489613, Registered Office is Cumbria House, 16-20 Hockliffe Street, Leighton Buzzard, Bedfordshire, LU7 1GN. VAT Registration Number is 500 2481 05.

See all our properties at www.connells.co.uk | www.rightmove.co.uk | www.zoopla.co.uk

Property Ref: BUS308535 - 0004