



## St. Georges Square, SW1V

£1,153 Per week

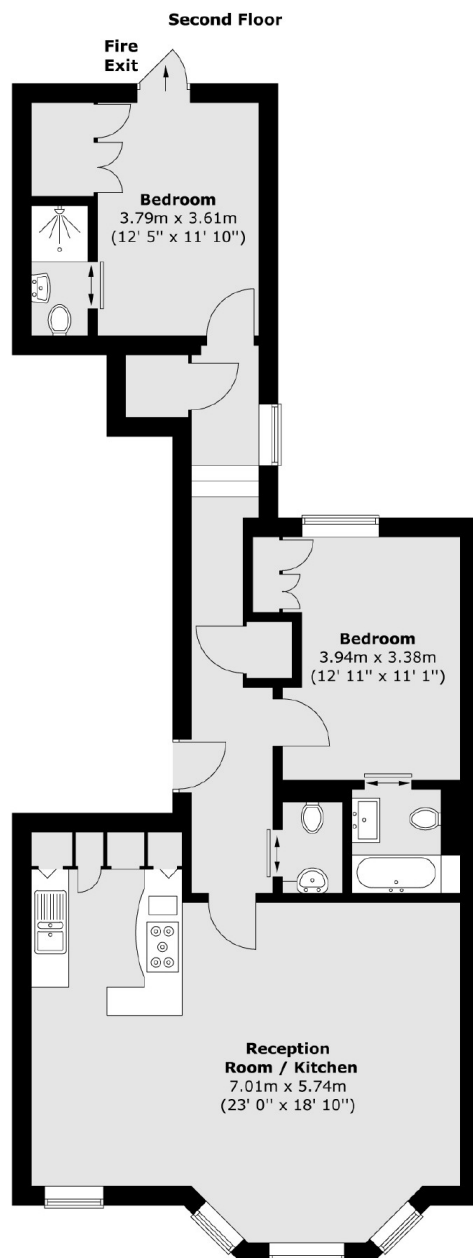
This stunning third floor apartment (with lift access) features two spacious double bedrooms and three modern bathrooms. High ceilings and expansive windows fill the home with natural light, while offering beautiful views over the River Thames. Residents also enjoy exclusive access to St George's Garden Square, adding to the property's charm and appeal.

St Georges's Square is conveniently located for close transport links from Pimlico Underground Station and Victoria Station. In addition, it is also within easy reach of the many amenities of Chelsea and Belgravia.

### Features

- Two Bedrooms
- Three Bathrooms
- Ample Storage
- Views of the River
- Lift
- Garden Square

# St. Georges Square, London, SW1V



Total area (approx.) : 82.4 sq. m (887 sq. ft)