

Flat 3, 36 Clyde Road, West Didsbury, Manchester, M20 2HN



**JP&Brimelow**  
ESTATE AGENTS

# Offers In The Region Of £235,000

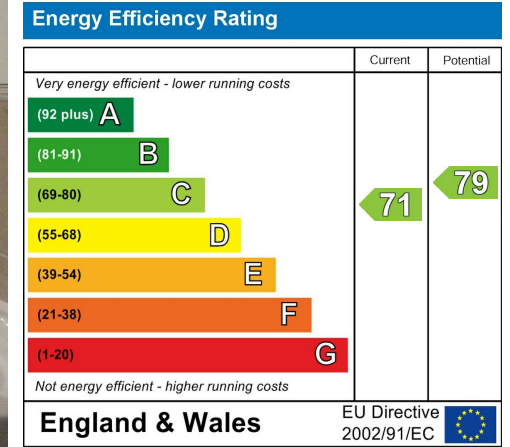
 2  1  1  C

\*\*\*VIDEO TOUR AVAILABLE\*\*\* A spacious TWO DOUBLE BEDROOM first floor apartment, in this attractive period conversion, off Lapwing Lane in West Didsbury. A short stroll from both Burton Road and Lapwing Lane with its array of independent boutique shops, popular bars and restaurants. Close to the Albert Club and the Metrolink station on Lapwing Lane, giving you direct access into the Manchester City centre, Media City and Didsbury village. The well-planned accommodation consists of an entrance hallway, an open plan lounge/dining room opening to a fitted kitchen area, an inner hallway leading to two double bedrooms, and a three-piece bathroom. This apartment benefits from gas fired central heating, off road parking to the rear of the building on a first come basis and a well-established communal lawned garden. Internal inspection is highly recommended.



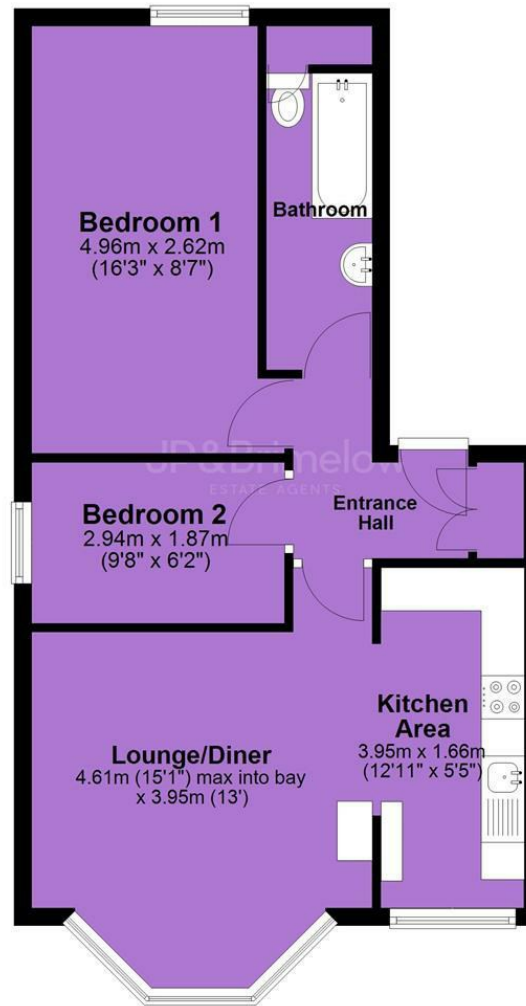


### EPC Chart



Tenure: **Leasehold** Council Tax Band: **B**

## First Floor



JP & Brimelow Estate Agents Ltd  
430 Barlow Moor Road, Manchester, M21 8AD  
Tel: 0161 8822233  
E: sales@jpbrimelow.co.uk www.jpandbrimelow.co.uk



**JP & Brimelow**  
ESTATE AGENTS

NOTICE: JP & Brimelow Estate Agents Ltd for themselves and for the vendors or lessors of this property whose agents they are give notice that:

- (i) the particulars are set out as a general outline only for the guidance of intending purchasers or lessees, and do not constitute, nor constitute part of, an offer or contract;
- (ii) all descriptions, dimensions, references to the condition and necessary permissions for use and occupation, and other details are given in good faith and are believed to be correct but any intending purchasers or tenants should not rely on them as statements or representations of fact but must satisfy themselves by inspection or otherwise as to the correctness of each of them;
- (iii) no person in the employment of JP & Brimelow Estate Agents Ltd has any authority to make or give any representation or warranty whatever in relation to this property.

 [jpandbrimelowstateagents](https://www.instagram.com/jpandbrimelowstateagents)

 [@jpandbrimelow](https://www.twitter.com/jpandbrimelow)