

Lawn House Close, E14

£375,000

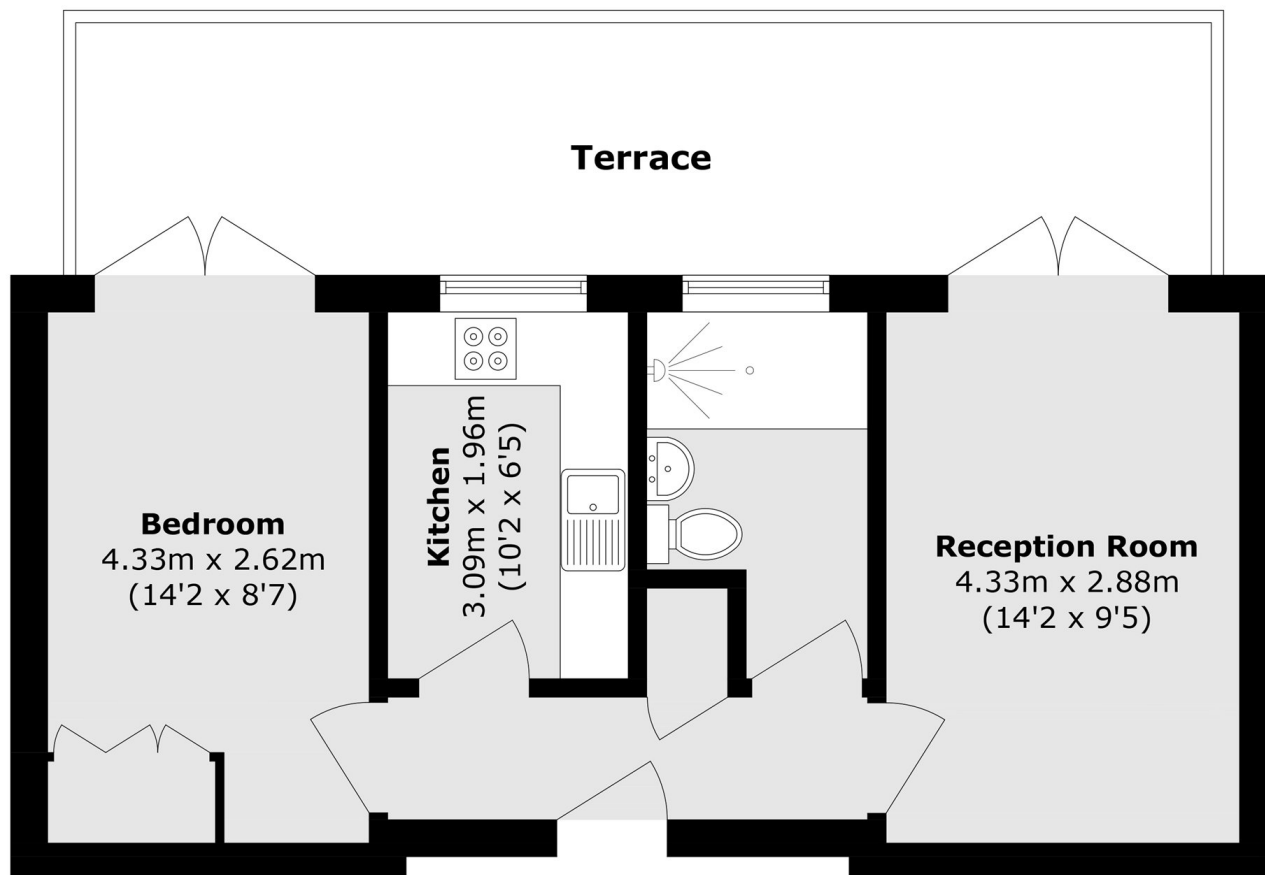
We are pleased to offer this well-presented one-bedroom apartment in a sought-after dockside location in Canary Wharf. The property benefits from excellent natural light throughout, a secure entry phone system, integrated kitchen appliances, private outdoor space and allocated underground parking.

Antilles Bay Apartments is conveniently located for easy access to Canary Wharf and its wide range of amenities. Canary Wharf station is approximately 0.6 miles away, providing access to the Elizabeth line, Jubilee line and DLR. South Quay DLR station is also within easy walking distance (approximately 0.3 miles), offering convenient connections to the City and beyond.

Features

- Allocated Parking
- Private Outdoor Space
- Canary Wharf Location
- Sought After Development
- Dockside
- Integrated Appliances

Lawn House Close, London, E14



Ground Floor

Total area (approx.): 41.2 sq. m (443.4 sq. ft)
Terrace area (approx.): 19.6 sq. m (210.9 sq. ft)