



## Ainsdale Road, W5

£1,185,000

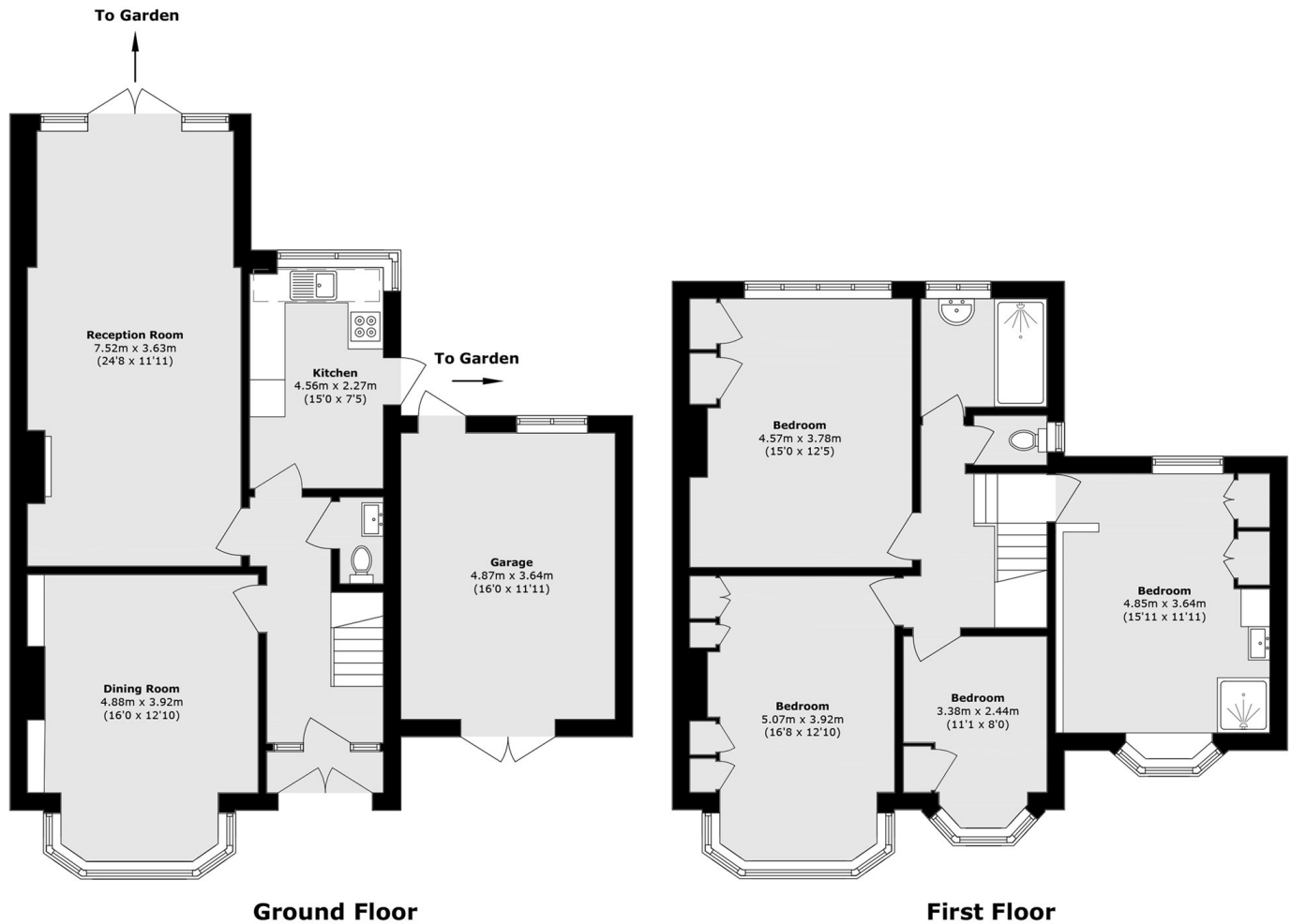
A well-presented four-bedroom, two-reception 1930s semi-detached family home, extended on the first floor with further potential to extend into the loft and ground floor (STPP). Well maintained throughout, the property offers off-street parking, a large rear garden, and a garage.

Located on Ainsdale Road in the heart of Ealing, the property benefits from a quiet residential setting with easy access to local shops, parks, and well-regarded schools. Excellent transport links nearby provide convenient connections into Central London and beyond.

### Features

- Four Bedrooms
- Two Receptions
- Quiet Street
- Family-Friendly Location
- Excellent Transport
- Good Schools

# Ainsdale Road, London, W5



Total area (approx.): 156.4 sq. m (1683.4 sq. ft)  
(Including Garage)  
Garage area (approx.): 17.7 sq. m (190.5 sq. ft)