



Fairhope Avenue

Salford



In Excess of £270,000

# Fairhope Avenue

Salford

BEAUTIFULLY PRESENTED THREE BEDROOM SEMI-DETACHED HOME COMING TO THE MARKET CHAIN FREE! This stunning FAMILY home comes complete with an AMAZING, WELL KEPT, LARGE GARDEN TO THE REAR!

Council Tax band: A

Tenure: Freehold

- Stunning three bedroom semi-detached property coming to the market CHAIN FREE!
- Contemporary fitted kitchen diner
- Great location, close to Salford Royal Hospital, excellent transport links and good local schooling
- Low maintenance garden to the front and a spacious, well-kept garden to the rear
- Large family lounge
- Utility room and downstairs W/C
- Three bedrooms complete with fitted wardrobes
- Early viewing highly recommended
- Perfect first time buy or family home!



HILLS



**Entrance Hallway**

9' 6" x 9' 2" (2.90m x 2.79m)

**Lounge**

17' 11" x 10' 0" (5.46m x 3.04m)

**Kitchen**

15' 0" x 8' 10" (4.57m x 2.68m)

**Utility Room**

6' 3" x 2' 4" (1.91m x 0.70m)

**W.C**

5' 6" x 3' 3" (1.68m x 1.00m)

**Landing**

**Bedroom One**

14' 10" x 8' 4" (4.52m x 2.55m)

**Bedroom Two**

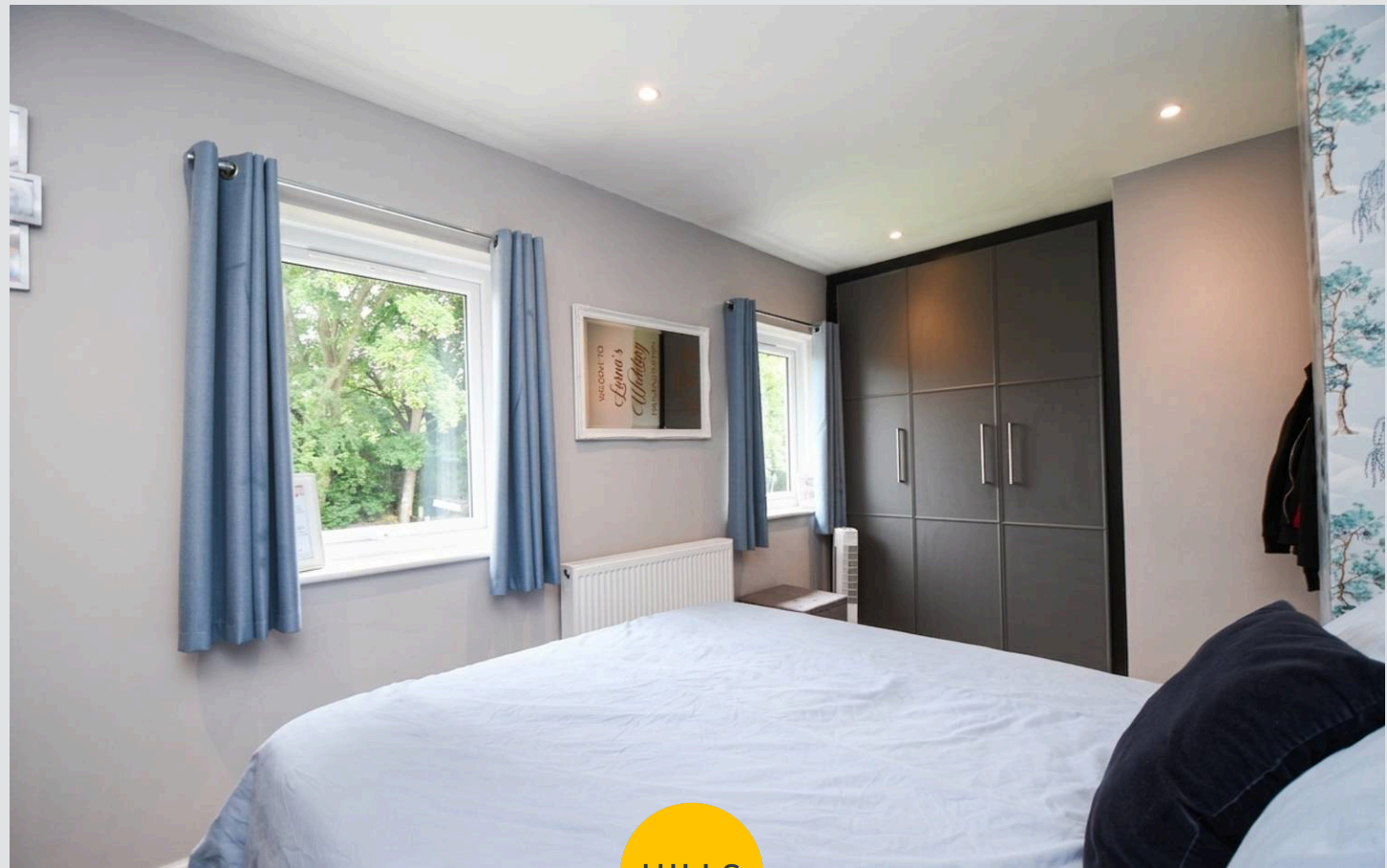
13' 9" x 8' 10" (4.20m x 2.68m)

**Bedroom Three**

8' 9" x 8' 4" (2.67m x 2.55m)

**Bathroom**

8' 11" x 5' 5" (2.71m x 1.66m)



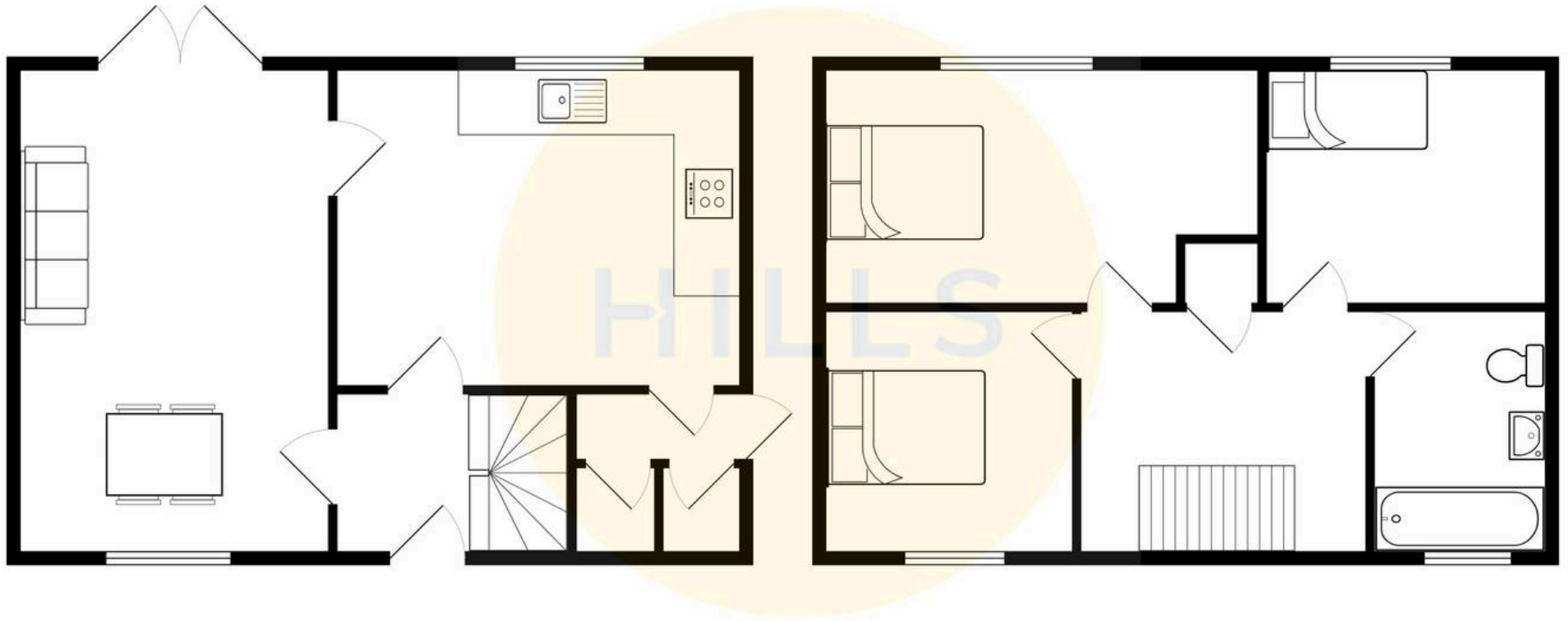
HILLS





HILLS







## Hills | Salfords Estate Agent

Hills Residential, Sentinel House Albert Street – M30 0SS

0161 707 4900

[sales@hills.agency](mailto:sales@hills.agency)

[www.hills.agency/](http://www.hills.agency/)



By law, we are required to conduct anti-money laundering checks on all potential buyers and sellers. In line with HMRC guidelines, our trusted partner, Coadjute, will securely manage these checks on our behalf. A non-refundable fee of £45 + VAT per person will apply, and Coadjute will handle the payment. Once an offer is accepted, Coadjute will send a secure link for you to complete the biometric checks. These checks must be completed before we can send the memorandum of sale to all parties. PLEASE NOTE: The Agent has not tested any equipment, fixtures, fittings or services so cannot verify that they are in working order or fit for the purpose. References to the properties tenure are based on information supplied by the seller. You are advised to check the availability of this property before travelling any distance to view. Every effort has been made to ensure these particulars are correct and not misleading but their accuracy is not guaranteed nor do they form part of any contract.