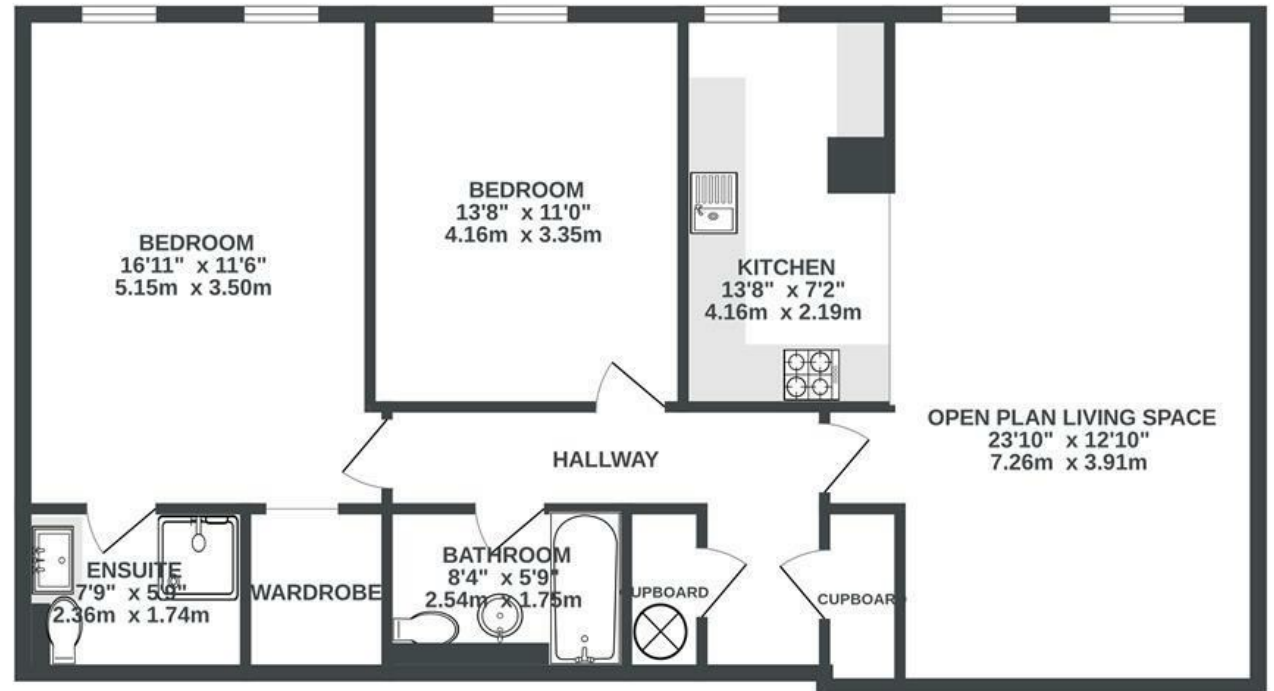


# 51.02 Apartments

## CITY CENTER

APPROXIMATE FLOOR AREA  
91.2 SQM / 982 SQFT



**Boardwalk**

# St. James Barton , BRISTOL



£285,000



2 Bedrooms



BS1 3LL



2 Bathrooms

*"The property is ideally located within walking distance to the beautiful harbourside and Gloucester Road. The apartment is spacious and full of light, the south facing windows allow plenty of natural daylight and keeps the apartment warm during winter months, energy bills low compared to the average. The open space area comprising the kitchen, living and dining areas is very spacious and perfect to have friends and family over. The bedrooms are super spacious and the walk in wardrobe is a plus!"*

