



MALLINSON  
& CO

INNOVATIVE PROPERTY EXPERTS

Hesley Lane, Thorpe Hesley, Rotherham, S61 2PT

£249,995

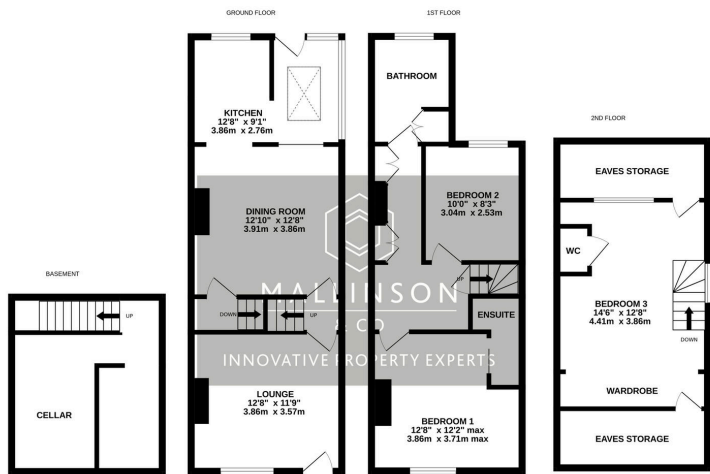
🛏️ 3 🚿 3 🚻 2



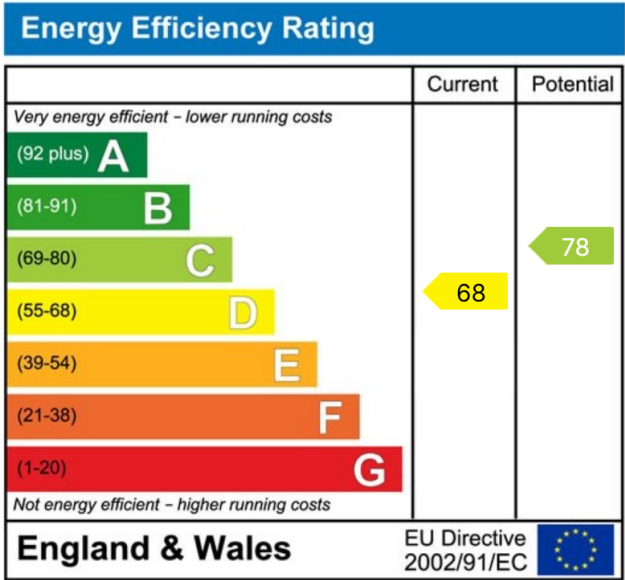
- SEMI DETACHED
- EXTENDED TO REAR
- EN SUITE FACILITY TO 2 BEDROOMS
- SPACE FOR PARKING TO FRONT
- CLOSE TO LOCAL AMENITIES, SCHOOLS & TRANSPORT LINKS
- 3 BEDROOMS
- MODERN KITCHEN DINER
- LOW MAINTENANCE LANDSCAPED REAR GARDEN
- COUNTRYSIDE VIEWS TO REAR
- VIEWING IS RECOMMENDED



EARLY VIEWING IS STRONGLY RECOMMENDED ... SITUATED ALONG THE EVER-POPULAR HESLEY LANE AND ENJOYING FAR-REACHING COUNTRYSIDE VIEWS, THIS BEAUTIFULLY PRESENTED THREE-BEDROOM SEMI-DETACHED HOME OFFERS DECEPTIVELY SPACIOUS AND VERSATILE ACCOMMODATION ARRANGED OVER THREE LEVELS. THOUGHTFULLY EXTENDED AND WELL MAINTAINED, THE PROPERTY BLENDS CHARACTER FEATURES WITH MODERN APPOINTMENTS, MAKING IT IDEALLY SUITED TO COUPLES, FAMILIES OR THOSE SEEKING FLEXIBLE LIVING WITH HOME-WORKING POTENTIAL.



TOTAL FLOOR AREA: 1395 sq.ft. (129.6 sq.m.) approx.  
 Whilst every attempt has been made to ensure the accuracy of the description contained here, measurements of doors, windows, rooms and any other items are approximate and no responsibility is taken for any error, omission or mis-statement. This plan is for illustrative purposes only and should be used as such by any prospective purchaser. The services, systems and appliances shown have not been tested and no guarantee as to their operability or efficiency can be given.  
 Made with Metropix (2020)



INNOVATIVE  
 PROPERTY  
 EXPERTS

**Mallinson & Co**

Office: 01226 414 150  
 Email: ben@mallinsonandco.co.uk  
 Web: www.mallinsonandco.co.uk  
 Suite 6, Penistone 1, St. Mary's Street, Penistone, S36 6DT