



Mowbray Road, NW6

£400,000

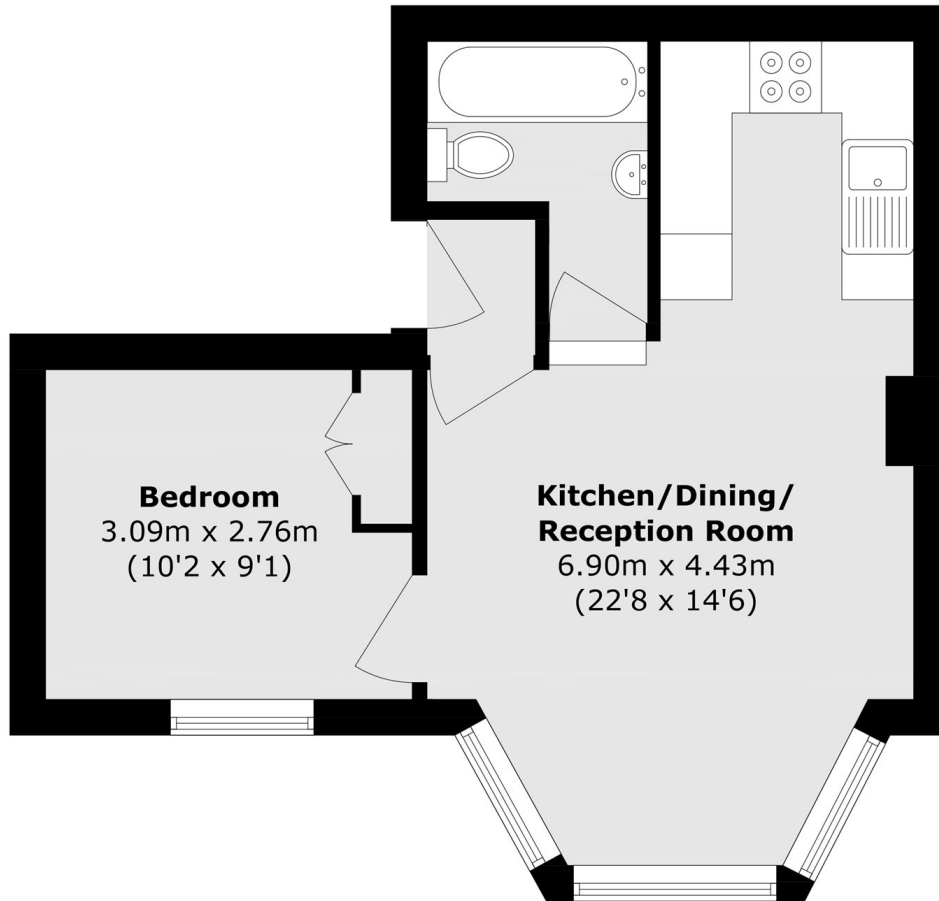
A delightful one bedroom apartment on the first floor of a Victorian conversion located on a tree-lined residential road. The apartment has a bright open plan kitchen/living area containing original tinted glass windows, and has access to a shared garden. The building benefits from weekly maintenance.

Mowbray Road is ideally situated in the Mapesbury Estate and borders Brondesbury, Queens Park and West Hampstead. With easy access to Brondesbury Park overground, Kilburn Station Jubilee Line and Brondesbury Station overground.

Features

- Victorian Conversion
- One Bedroom Flat
- Refurbished To High Standard
- Substantial Hidden Storage
- Shared Garden
- Share Of Freehold

Mowbray Road,
London, NW6



Total area (approx.): 37.4 sq. m (402.5 sq. ft)

Dexters

Cricklewood
28-30 Cricklewood Broadway
London
NW2 3HD
Sales
020 7794 7710

Energy Rating: . We aim to make our particulars both accurate and reliable. However they are not guaranteed; nor do they form part of an offer or contract. If you require clarification on any points then please contact us, especially if you're traveling some distance to view. Please note that appliances and heating systems have not been tested and therefore no warranties can be given as to their good working order.

 **RICS** | Regulated
Estate Agent
and Letting Agent

[dexters.co.uk](https://www.dexters.co.uk)