

**Location:**

**Key points:**

- Share of freehold with 999 year leases
- Early preview event for selected applicants registering early
- Formal Launch May 2026
- 10 Structural build warranty
- Parking to selected units

# Do Better:

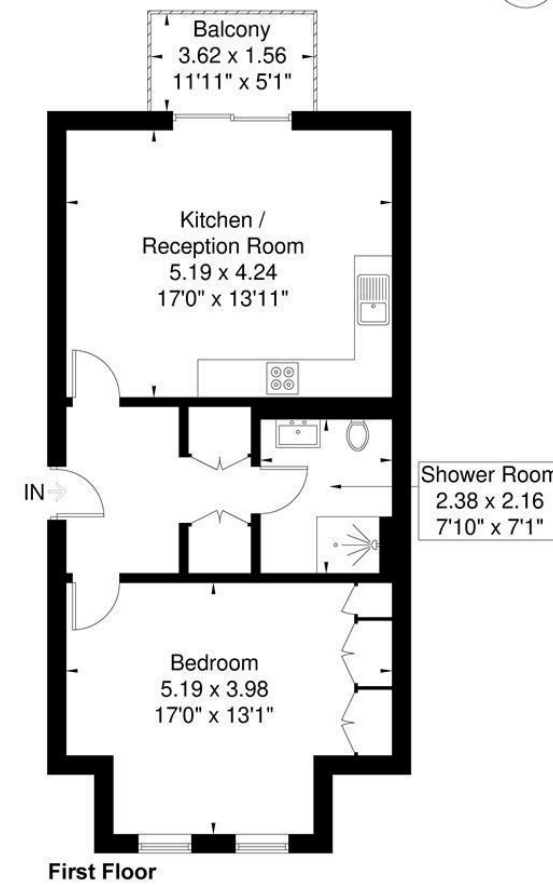
**Acton**  
sales@astonrowe.co.uk

57-59 Churchfield Road,  
Acton, London, W3 6AY

020 8992 3600



**Lynton Road**  
Approximate Gross Internal Area = 56.4 sq m / 607 sq ft



Although every attempt has been made to ensure accuracy, all measurements are approximate. The floorplan is for illustrative purposes only and not to scale.  
© www.perspective.co.uk

## £585,000

## Lynton Road, London W3 9HP

Energy Efficiency Rating	
Current	Potential
Very energy efficient - lower running costs	
(92 plus) <b>A</b>	
(81-91) <b>B</b>	
(69-80) <b>C</b>	
(55-68) <b>D</b>	
(39-54) <b>E</b>	
(21-38) <b>F</b>	
(1-20) <b>G</b>	
Not energy efficient - higher running costs	
England & Wales	
EU Directive 2002/91/EC	

Environmental Impact (CO <sub>2</sub> ) Rating	
Current	Potential
Very environmentally friendly - lower CO <sub>2</sub> emissions	
(92 plus) <b>A</b>	
(81-91) <b>B</b>	
(69-80) <b>C</b>	
(55-68) <b>D</b>	
(39-54) <b>E</b>	
(21-38) <b>F</b>	
(1-20) <b>G</b>	
Not environmentally friendly - higher CO <sub>2</sub> emissions	
England & Wales	
EU Directive 2002/91/EC	

- 1 Reception Rooms
- 1 Bedrooms
- 1 Bathrooms

The current owner says:



COMING SOON. REGISTER EARLY FOR EXCLUSIVE EARLY ACCESS BEFORE FORMAL LAUNCH- to this exciting new development on Lynton Road, a few minutes walk from Acton Mainline for the Elizabeth Line.

A contemporary, collection of just nine 1, 2 and 3 bedroom apartments, offering duplex apartments, high specification finishes by a leading local developer, and with private outside space and parking to selected units, we are now taking registrations for a pre-launch for just a handful of selected applicants before a formal Launch in May 2026, so register early for access and further details.

Prices start from £525,000. Please register for a brochure and further information with our New Homes Team

What's better: