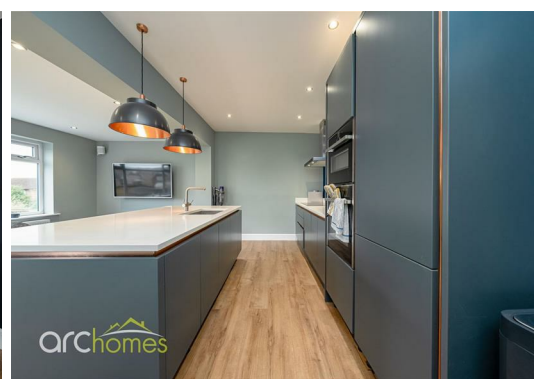





7 Reynolds Close, BL5 1HD Offers in the region of £350,000

ARC HOMES are delighted to offer FOR SALE this absolutely gorgeous 'turn-key' detached bungalow situated in a sought after location in Over Hulton. Properties in this location are in extremely high demand and this beautiful family home offers generous accommodation together with a larger than average garden and two generous bedrooms. Reconfigured by the current owner; Reynolds Close would suit a range of buyers and early viewings are advised. Entry is via a spacious welcoming hallway. A well proportioned sitting room and modern open plan kitchen / diner / family room occupies the rear of the property overlooking the garden, whilst to the front of the property are two generous bedrooms. There is also a modern family shower room, with walk in shower, plant room and garage. Outside, the property has a great size rear garden, front garden and driveway with off road parking. The property is fully electric and benefits from an air source heat pump, a 9kW solar PV array with Tesla Powerwall 2 battery, and a Zappi EV charger, all owned outright and installed from March 2020.

The energy system allows surplus electricity to be stored for later use or exported to the grid, while the Zappi charger offers flexible EV charging using grid power, stored battery energy, or surplus solar generation. This provides excellent energy independence, smart tariff flexibility, and the added reassurance of whole-home backup power in the event of an outage.



| Energy Efficiency Rating | | Current | Potential |
|---|--|---|-----------|
| Very energy efficient - lower running costs | | | |
| (92 plus) A | | 100+ | 100+ |
| (81-91) B | | | |
| (69-80) C | | | |
| (55-68) D | | | |
| (39-54) E | | | |
| (21-38) F | | | |
| (1-20) G | | | |
| Not energy efficient - higher running costs | | | |
| England & Wales | | EU Directive 2002/91/EC  | |

| Environmental Impact (CO ₂) Rating | | Current | Potential |
|---|--|---|-----------|
| Very environmentally friendly - lower CO ₂ emissions | | | |
| (92 plus) A | | | |
| (81-91) B | | | |
| (69-80) C | | | |
| (55-68) D | | | |
| (39-54) E | | | |
| (21-38) F | | | |
| (1-20) G | | | |
| Not environmentally friendly - higher CO ₂ emissions | | | |
| England & Wales | | EU Directive 2002/91/EC  | |



30 Bolton Old Road, Atherton, M46 9DL

T. 01942 363599
 info@arc-homes.net

