



126 Scalby Road

Scarborough, YO12 5QP

Offers Around £360,000





Description

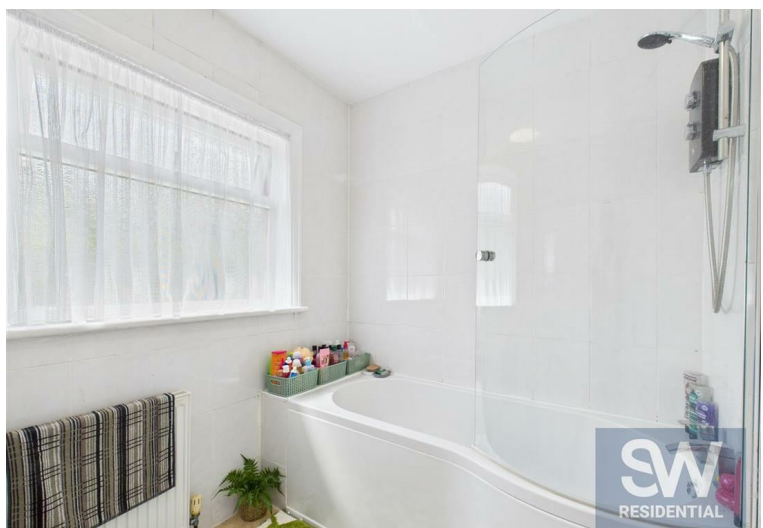
Located along the ever-popular Scalby Road, this attractive detached family home offers generous living space, modern comforts, and a highly convenient setting close to excellent local amenities and schools.

The property provides a welcoming home perfect for family life complimented by an excellent sized private garden, driveway parking, and garage

Situated within one of Scarborough's most sought-after residential areas, the home is perfectly positioned for families. Highly regarded schools including Scalby School, St Augustine's and Newby Primary are just a short distance away, along with local shops, supermarkets, and regular bus routes connecting to the town centre and seafront. Scarborough Hospital is also within walking distance

Offering the ideal balance of space, location, and practicality, this is a wonderful opportunity for those seeking a comfortable family home in a well-connected and desirable part of Scarborough.

- SOUGHT AFTER LOCATION ON SCALBY ROAD NEAR WOODLANDS
- WELL PRESENTED 4 BED DETACHED PROPERTY
- GENEROUS GARDENS
- AMPLY PARKING
- CLOSE TO ALL AMENITIES

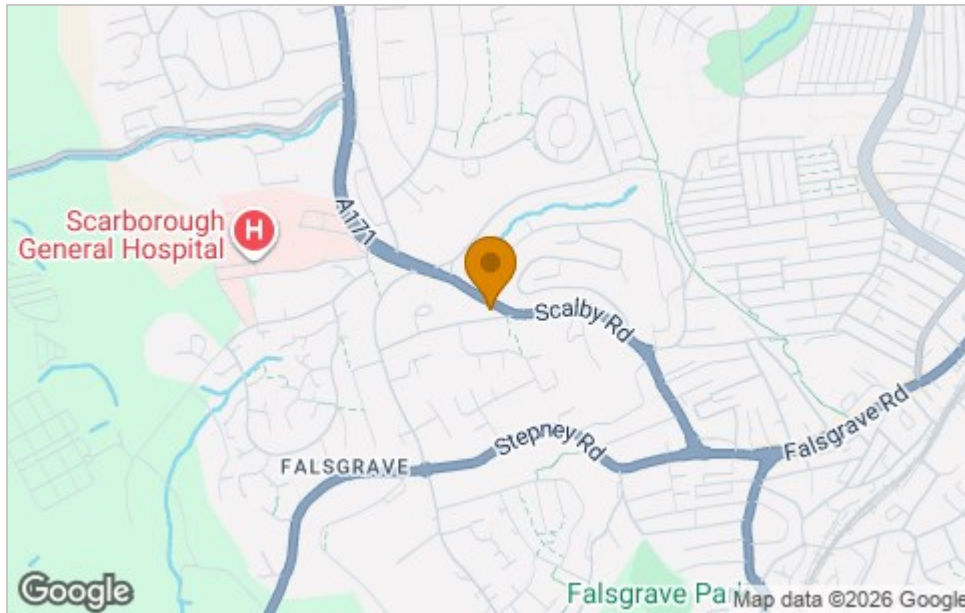




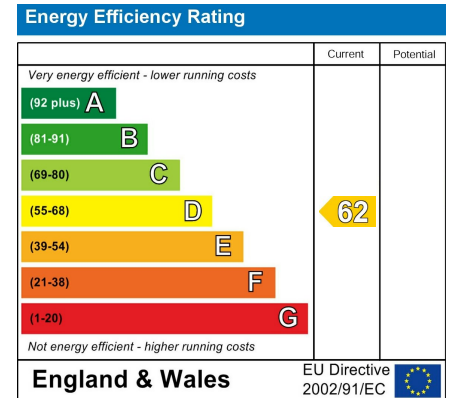
Floor Plan



Area Map



Energy Efficiency Graph



Viewing

Please contact our Scarborough Office on 01723 330077 if you wish to arrange a viewing appointment for this property or require further information.

These particulars, whilst believed to be accurate are set out as a general outline only for guidance and do not constitute any part of an offer or contract. Intending purchasers should not rely on them as statements of representation of fact, but must satisfy themselves by inspection or otherwise as to their accuracy. No person in this firm's employment has the authority to make or give any representation or warranty in respect of the property.

Unit 5 Cayley Court Hopper Hill Road, Scarborough, North Yorkshire, YO11 3YJ
Tel: 01723 330077 Email: scarborough@sw.co.uk www.sw.co.uk