

Boulevard Drive, NW9

£2,250 Per calendar month

Dexters



Boulevard Drive, NW9

A modern two double bedroom apartment with off-street parking and access to an on-site gym/spa and swimming pool. This property boasts a modern fully fitted kitchen, open plan living area leading onto the balcony, two bedrooms and bathrooms. There is also one allocated parking space for the property.

The area benefits from a wide selection of popular restaurants and retail shops, with quick access to the city via Colindale Tube Station on the Northern Line.

Features

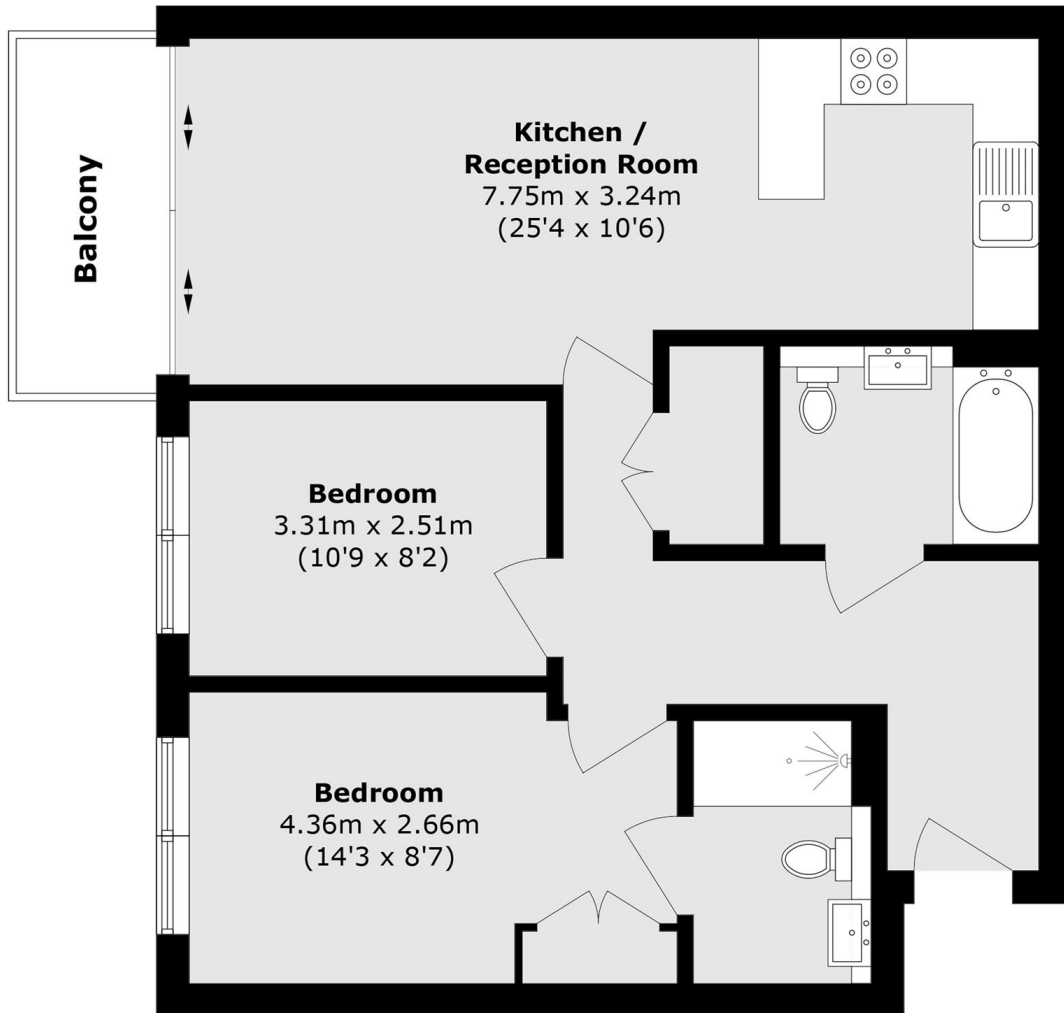
- Modern
- Communal Gym and Pool
- Allocated Parking
- Balcony
- Two Bathrooms
- Great Location







Boulevard Drive,
London, NW9



Total area (approx.): 65.3 sq. m (702.9 sq. ft)

Balcony area (approx.): 4.1 sq. m (44.1 sq. ft)