



Windmill Field, Windlesham

**£475,000**



## Windmill Field, Windlesham, Surrey GU20 6JF

Offered for sale with no onward chain, this three bedroom link detached house with driveway and garage is located on the popular Windmill Field development in Windlesham.

### FEATURES

- No onward chain
- 1010 sq. ft
- Link detached
- Gas central heating
- Walking distance to village shops and pubs

### ACCOMMODATION

- Storm porch
- Sitting room
- Conservatory
- Kitchen/dining room
- Cloakroom
- Three bedrooms
- Family bathroom

### OUTSIDE

- Driveway
- Additional residents parking
- South west facing rear garden with patio
- Side access
- Garage

### EPC RATING

D

### LOCAL AUTHORITY/COUNCIL TAX

Surrey Heath – Band E





### Windmill Field

Approximate Gross Internal Area = 79.4 sq m / 854 sq ft  
Garage = 14.5 sq m / 156 sq ft  
Total = 93.9 sq m / 1010 sq ft

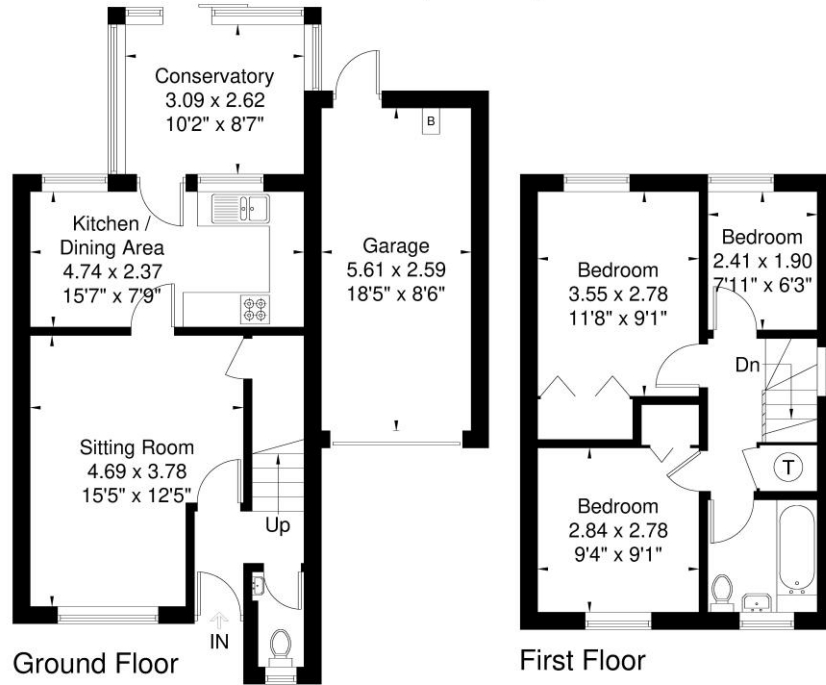


Illustration for identification purposes only, measurements are approximate, not to scale.

**Disclaimer:** We wish to inform prospective purchasers that we have prepared these sales particulars as a general guide. We have not carried out a detailed survey, nor tested the services, appliances and specific fittings. Room sizes are approximate and rounded: they are taken between internal wall surfaces and therefore include cupboards / shelves, etc. Accordingly, they should not be relied upon for carpeting, curtains / blinds and kitchen equipment, whether fitted or not, are deemed removable by the vendor unless specifically itemized within these.



**NEWTON ROWE**  
SALES & LETTINGS

The Old Dairy, 7 Updown Hill, Windlesham, Surrey GU20 6AF  
enquiries@newtonrowe.co.uk | 01276 986900