



Steven Oates are pleased to offer for rent this modern built two double bedroom second floor apartment offering stylish and modern living within a desirable development adjacent to Hertford East station and the town centre. The property benefits from master bedroom with en-suite, double second bedroom, good sized open plan kitchen / lounge, family bathroom, secure gated parking and access to large communal podium. Available early June 2026 and offered unfurnished.



ENTRANCE HALL

KITCHEN/ LIVING ROOM 22' 8" x 9' 11" (6.91m x 3.02m)

BEDROOM ONE 10' 9" x 10' 7" (3.28m x 3.23m)

ENSUITE 7' 1" x 7' 0" (2.16m x 2.13m)

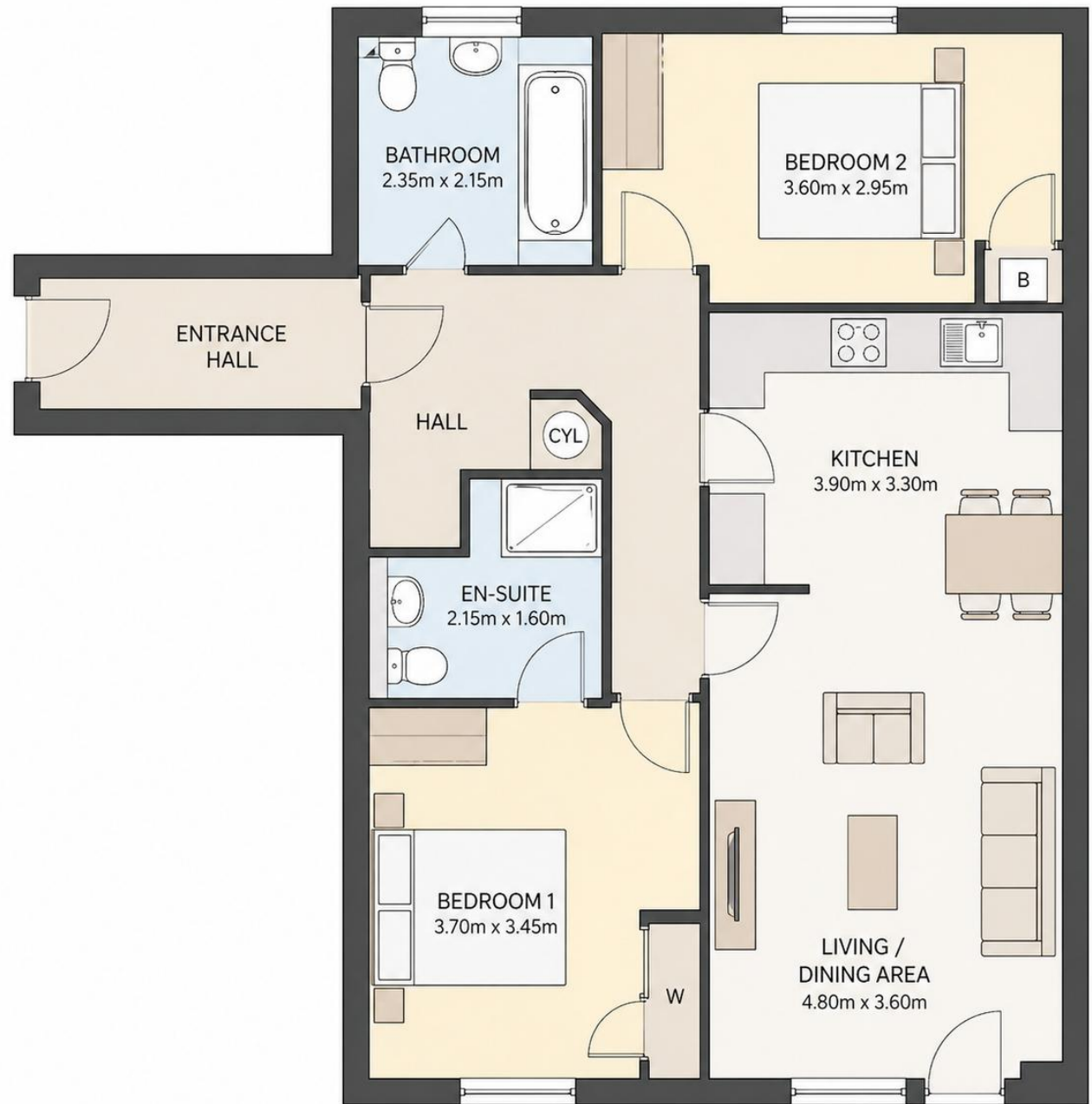
BEDROOM TWO 13' 5" x 8' 2" (4.09m x 2.49m)

BATHROOM 7' 3" x 5' 11" (2.21m x 1.8m)

EXTERNALLY THE PROPERTY BENEFITS FROM

SECURE GATED PARKING

COMMUNAL PODIUM





Whilst we endeavour to make our sales particulars fair, accurate and reliable, they are only intended as a general guide to the property. Measurements and distances are approximate. These particulars do not form part of any offer or contract. If there are important matters that are likely to affect your decision to buy, please contact us before viewing the property. Please note that we have not tested the services, equipment or appliances in this property, accordingly, we advise prospective buyers to commission their own survey or service reports before finalising any offer to purchase.