



Linden Close

Thames Ditton, KT7 0DG

£450,000

A fantastic opportunity to acquire this ground floor maisonette with two double bedrooms and modern family bathroom, located in a highly desirable cul-de-sac in the heart of Thames Ditton village. The property has original wooden flooring throughout and features a spacious eat-in kitchen and large reception room that opens via sliding patio doors to a private rear garden with large shed. Further benefitting good storage cupboards and ability to extend STPP. No onward chain.

- 2 double bedrooms
- Ground floor
- Eat-in kitchen
- Large reception room
- Thames Ditton high street location
- Direct access to private garden
- Modern white bathroom
- No onward chain

Floor Plan

Linden Close

Approximate Gross Internal Area = 73.5 sq m / 791 sq ft

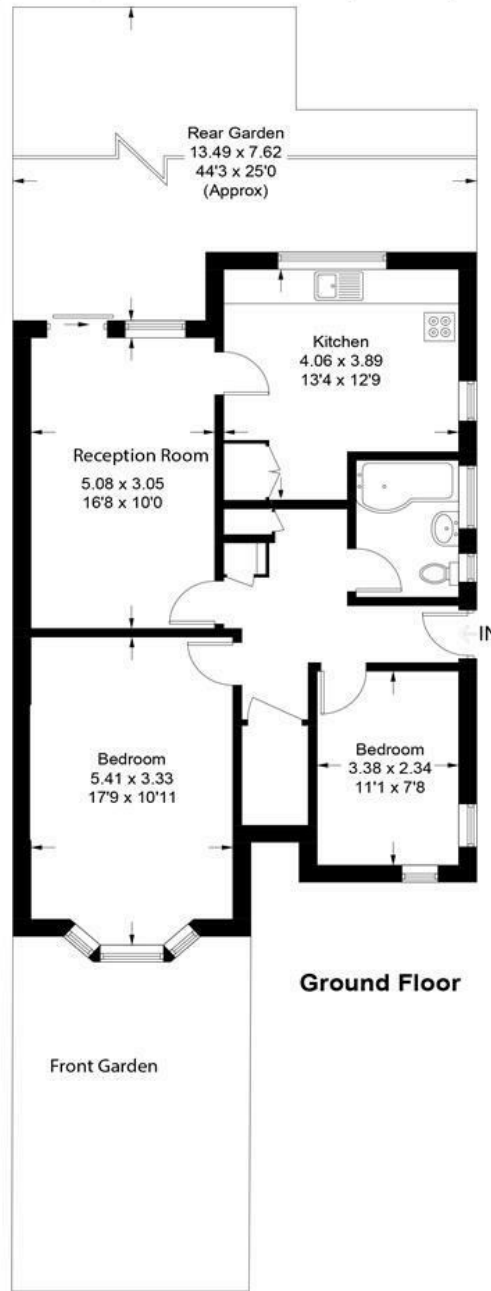
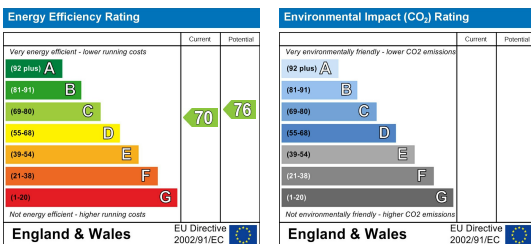


Illustration for identification purposes only, measurements are approximate, not to scale. Fourlabs.co © (ID1247362)

Energy Efficiency Graph



These particulars, whilst believed to be accurate are set out as a general outline only for guidance and do not constitute any part of an offer or contract. Intending purchasers should not rely on them as statements of representation of fact, but must satisfy themselves by inspection or otherwise as to their accuracy. No person in this firm's employment has the authority to make or give any representation or warranty in respect of the property.