



## St. Luke's Avenue, SW4

£2,400 Per calendar month

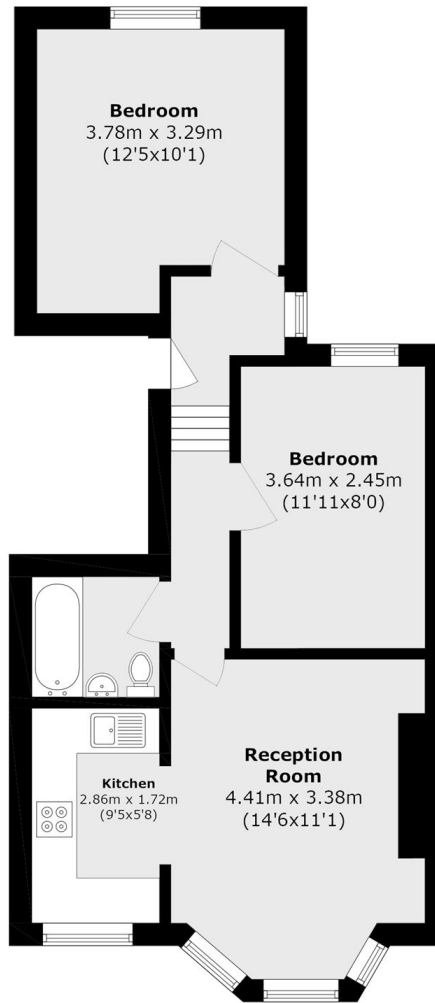
A well-presented two bedroom flat with a spacious semi open plan kitchen and reception room, modern bathroom and good natural light throughout.

Located off Clapham High Street with all its amenities and less than half a mile from both Clapham North and Clapham Common underground stations.

### Features

- Two Double Bedrooms
- First Floor Flat
- Spacious Reception Room
- Open Plan Kitchen
- Prime Location
- Close To Transport

# St. Luke's Avenue, London, SW4



Total area (approx.): 49.5 sq. m (568.3 sq. ft)