



Langar Woods Estate, Harby Road, Langar, Nottingham, NG13 9HZ

£80,000

🛏 2 🚿 1 🛋 1



- Detached Park Home Bungalow
- Popular Residential Park
- Spacious 46'x12' Home
- Garden and Off Street Parking Space
- Dual Aspect Living Room
- Two Bedrooms
- Edge of Park Location
- Stunning Conservatory
- Modern Fitted Bathroom
- No Stamp Duty To Pay!

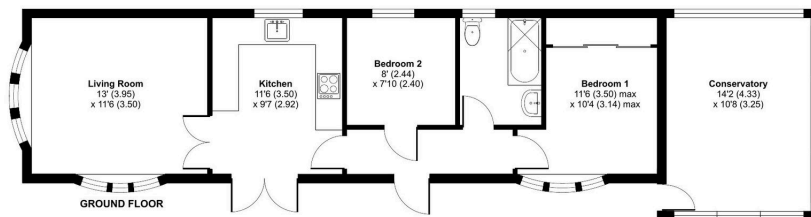


An absolutely stunning two bedroom (46'x12') park home bungalow located on the edge of this sought after residential park for the over 45's that has so much to offer! This 'Langdale Plus' design will be popular with buyers due to its adaptable layout and the conservatory to the rear is a lovely space to relax in and certainly is something you don't find very often with park homes. Internally, there is a spacious, dual aspect lounge, a modern fitted kitchen, a master bedroom with built in wardrobes, a modern stylish bathroom and a stunning part-brick built conservatory to the rear. There are garden areas to the side and an off street parking space to the side. This is an exceptional home that shouldn't be missed!



Harby Road, Langer, Nottingham, NG13

Approximate Area = 699 sq ft / 64.9 sq m
For identification only - Not to scale



Floor plan produced in accordance with RICS Property Measurement 2nd Edition, incorporating International Property Measurement Standards (IPMS Residential). © redcom 2025. Produced for The Park Home Agency Ltd. REF: 1356603



01793 230185
sales@theparkhomeagency.co.uk

Agents Notes: All measurements are approximate and quoted in metric with imperial equivalents and for general guidance only and whilst every attempt has been made to ensure accuracy, they must not be relied on. The fixtures, fittings and appliances referred to have not been tested and therefore no guarantee can be given that they are in working order. Internal photographs are reproduced for general information and it must not be inferred that any item shown is included with the property. For a free valuation, contact the numbers listed on the brochure