



DRAKEFELL ROAD, SE4

£425,000

One bedroom apartment
Extensively refurbished
New sash windows
Close to overground
Telegraph hill conservation
Energy rating: c

@marshandparsons
marshandparsons.co.uk

MARSH &
PARSONS



ABOUT THE PROPERTY

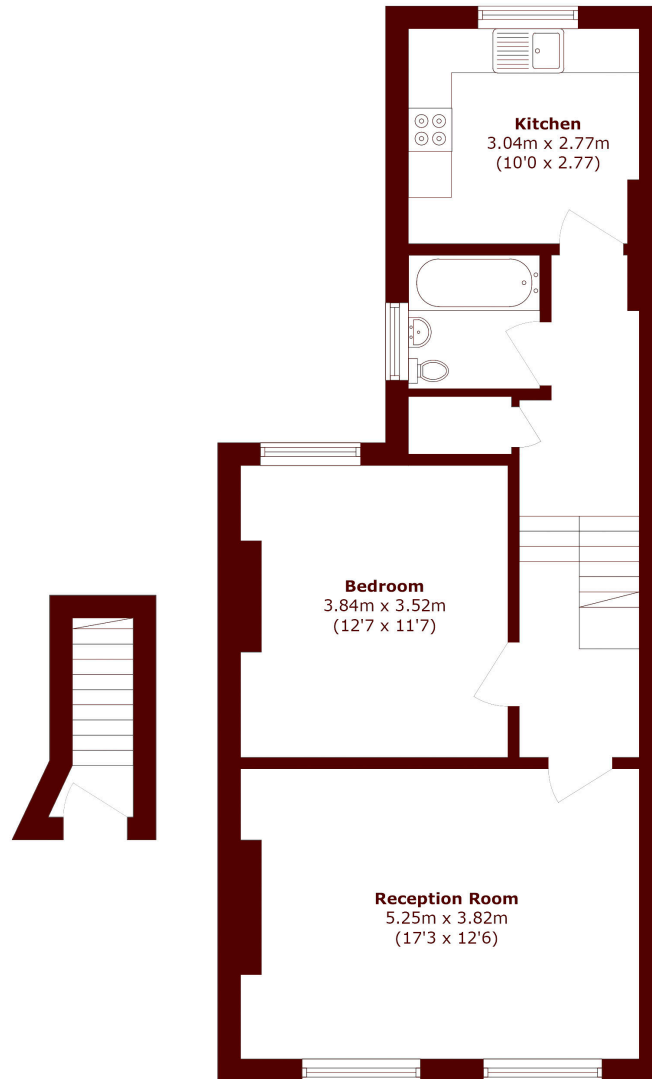
A great size one bedroom split level apartment of 650 Sq Ft arranged over the top floors of this Victorian terrace in the Telegraph Hill Conservation Area.

Having undergone a refurbishment program by the current owners, including the expensive job of replacing the sash windows, this home is offered in 'just move in' condition.

There is a lovely feeling of light throughout, with the large 17' lounge featuring gorgeous stripped and polished floorboards and two large sash windows.



STEP INSIDE DRAKEFELL ROAD



Total area (approx.): 60.6 sq. m (652.2 sq. ft)

Brockley
020 8629 8164

Energy Rating: C We aim to make our particulars both accurate and reliable. However, they are not guaranteed; nor do they form part of an offer or contract. If you require clarification on any points then please contact us, especially if you're traveling some distance to view. Please note that appliances and heating systems have not been tested and therefore no warranties can be given as to their good working order

**MARSH &
PARSONS**