

Bricklayer Lane, Kilnwood Vale

Offers Over £425,000

3 2 1



A spacious and Beautifully Presented Three Bedroom Family Home in a popular location, boasting a 17ft Kitchen Dining Room, Principal Bedroom with Luxurious En Suite, Allocated Parking and Garage.

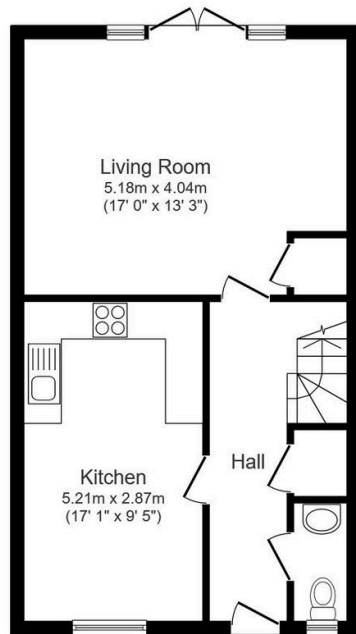
Tenure: Freehold

Council Tax Band: D

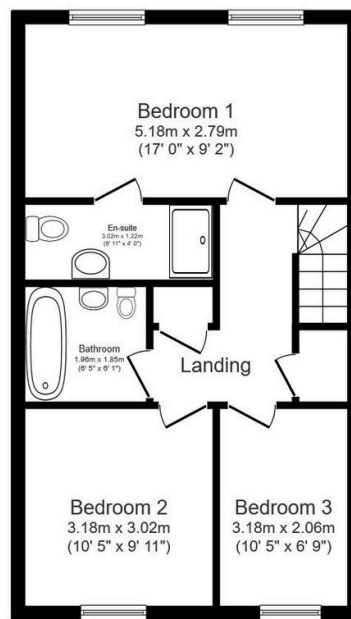
EPC: Current B - Potential B

Key Features

- Watch Our Video Tour
- 17'1" Kitchen/Dining Area
- En Suite To Principal Bedroom
- Garage
- Ground Floor WC
- 17ft Living Area
- Three Generous Bedrooms
- Luxurious Family Bathroom
- Allocated Parking
- Close To Village School



Ground Floor
Floor area 48.4 sq.m. (521 sq.ft.)



First Floor
Floor area 48.4 sq.m. (521 sq.ft.)

Total floor area: 96.8 sq.m. (1,042 sq.ft.)

This floor plan is for illustrative purposes only. It is not drawn to scale. Any measurements, floor areas (including any total floor area), openings and orientations are approximate. No details are guaranteed, they cannot be relied upon for any purpose and do not form any part of any agreement. No liability is taken for any error, omission or misstatement. A party must rely upon its own inspection(s). Powered by www.Propertybox.io