



## Blackheath Hill, SE10

£425,000

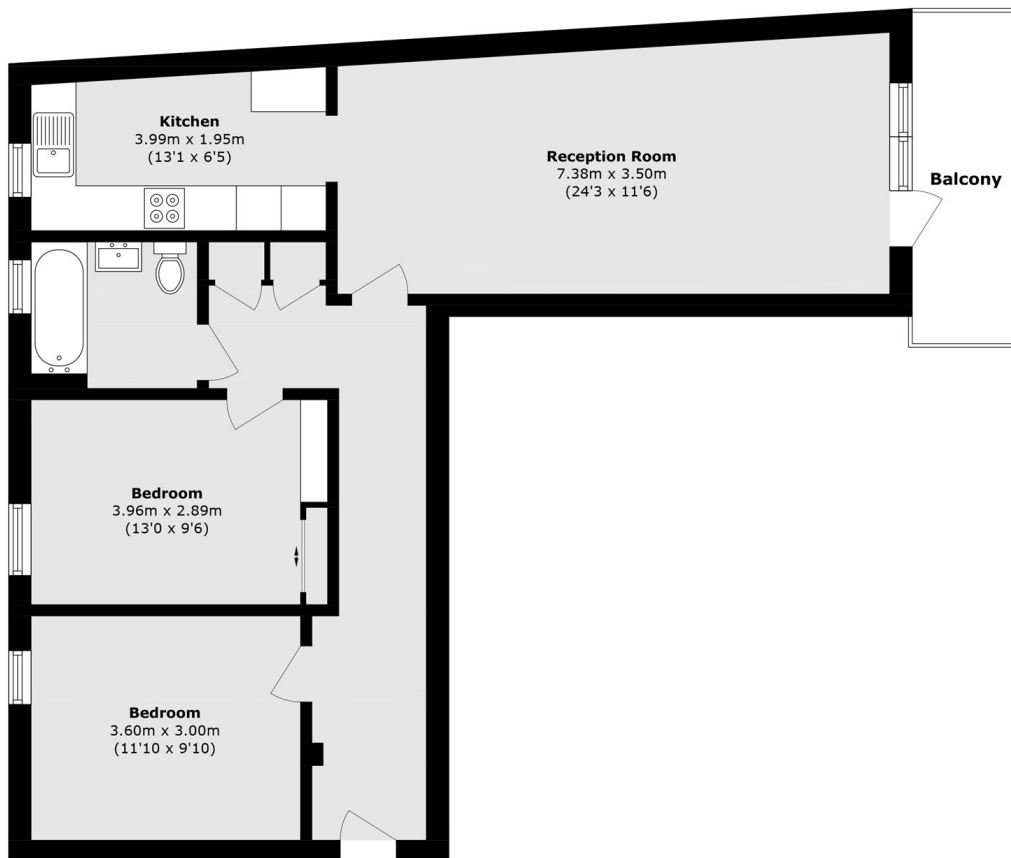
A charming two bedroom purpose built flat in a sought after location which would make an ideal first purchase. The flat further benefits from a private patio, modern finish and concierge services

Blackheath Hill offers a quick commute to Canary Wharf, London Bridge, Cannon Street, and Kings Cross via the Greenwich Mainline and DLR Station. Greenwich Park and Greenwich Market are a short walk away and offer a variety of local stores, restaurants, and bars for residents to enjoy.

### Features

- Two Bedrooms
- Sought After Location
- Modern
- Ideal First Purchase
- Private Patio
- No Work Required

# Blackheath Hill, London, SE10



Total area (approx.): 74.6 sq. m (802.9 sq. ft)  
Balcony area (approx.): 6.4 sq. m (68.8 sq. ft)